

# MakeNews



## Community Wellbeing Day 24 January 2026

Secondary school  
construction update



Garland Park  
consultation



Clubs, groups and  
activities for 2026



Heritage Talk:  
14 February



**Alconbury Weald update**

04 Development update

06 The Glade

07 Alconbury Weald Church Academy: Secondary school progress

08 Garland Park: final section

10 Southern Gateway ready for new homes

12 Prestley Park

13 Prestley Wood

14 Plans for the first new homes in Phase 3

15 Mayor backs growth and new station

**Living**

16 Ways of living

    About Shared Ownership

17 Meet the housebuilders

**Education focus**

18 Jemima House Day Nursery

19 Ermine Street Church Academy

20 Prestley Wood Academy

21 Urban&Civic volunteer day

**Environment**

22 Alconbury Weald Water Savers

**Enterprise Campus**

24 Latest news

    Hunts Business Awards

25 Meet the neighbours: Roythornes Solicitors

**Making journeys count**

26 Ride Away

27 Travel Survey

    Share Away

    LocalGo

    Tap Away

**Community**

28 Regular clubs, groups and classes

31 Sawtry & Alconbury Weald Cricket Club

32 Recent events

34 Community noticeboards

35 Alconbury Weald Community Association

36 **Contact**



MakeNews

*Make/News* is produced by Urban&Civic — master developer of Alconbury Weald — to update residents and our neighbouring communities on progress and news from the growing community. It is distributed to Alconbury Weald, Alconbury village, Alconbury Weston, the Stukeleys and Abbots Ripton, as well as being available in housebuilder marketing suites and other public places across Alconbury Weald.



Please recycle responsibly when you have finished with this newsletter

Hello



**Rebecca Britton**  
Regional Director, Communications, Communities and Partnerships  
E [rbritton@urbanandcivic.com](mailto:rbritton@urbanandcivic.com)  
T 01480 413141  
M 07739 339889



**Paul Murfin**  
Communications and Partnerships Manager  
E [paul.murfin@urbanandcivic.com](mailto:paul.murfin@urbanandcivic.com)  
T 01480 413141  
M 07407 605119



**Natalie Leigh-Brown**  
Senior Community Development  
E [natalie.leigh-brown@urbanandcivic.com](mailto:natalie.leigh-brown@urbanandcivic.com)  
T 01480 413141  
M 07823 527068

Hello and welcome to our winter 2025/26 Alconbury Weald newsletter, with the latest on the development as well as updates on schools, homes, businesses, sustainability, travel and community news.

The first phase of the development is well underway, with over 70% of homes delivered alongside 1.5 million sq ft of business space at the Enterprise Campus and a range of facilities and amenities. The next elements coming forward will be the final section of Garland Park, a health centre over the Co-op, new shops in The Glade and the secondary school.

Work is also underway on the next phases of Alconbury Weald. The Southern Gateway connection to the A141 was completed in late 2025 and will open when the first new homes are delivered in Phase 2. We would also like to introduce Shelly Cant, who will be working with the community to bring plans for Prestley Park to life.

In Phase 3, planning applications have been submitted for 450 new homes opposite the future Runway Park and plans for the clubhouse and pitches at the Sports Hub are being updated following feedback. Meanwhile Phase 4, which includes land for a new railway station, is at the very early design stage.

Our Water Savers initiative, which helps residents save water and money by making small changes to how they use hot water, is going well with around 20% of households already signed up. If you haven't done so yet, try the calculator to see what simple changes you could make in 2026.

We also continue to make journeys count and in addition to App Bikes and lift sharing, we've teamed up with Dews Coaches to give residents and employees at Alconbury Weald 10 free bus tickets for the AW1 bus to be used before the end of March 2026 (see page 27 for details).

Alconbury Weald hosts a wide variety of regular clubs, groups and classes that cater for all ages and abilities, and we've provided a full listing in this edition of *Make/News*. If your New Year's Resolution is to try out new sports or activities to improve your health, fitness and wellbeing, we've got you covered!

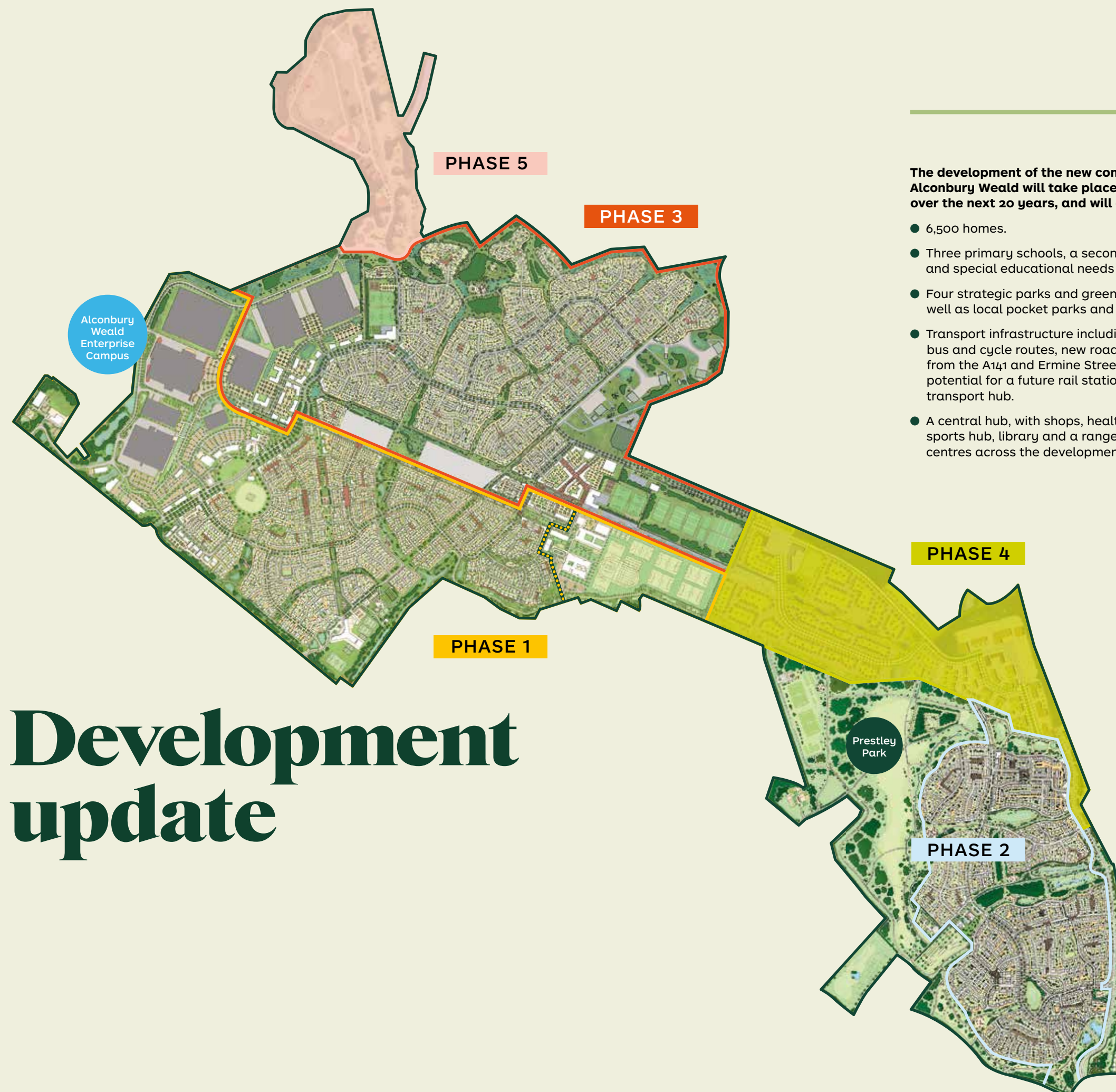
We'll also have a full calendar of community events again this year, kicking off with our Community Wellbeing Day on 24 January and a Heritage Talk on 14 February 2026.

We hope you find this *Make/News* interesting and informative. If you have any queries, or have any ideas for future editions, please let us know.

Wishing you a happy and healthy 2026.  
Becca, Paul and Natalie



# Development update



**The development of the new community at Alconbury Weald will take place in phases over the next 20 years, and will deliver:**

- 6,500 homes.
- Three primary schools, a secondary school and special educational needs school.
- Four strategic parks and green spaces, as well as local pocket parks and green corridors.
- Transport infrastructure including prioritised bus and cycle routes, new road connections from the A141 and Ermine Street, and the potential for a future rail station and transport hub.
- A central hub, with shops, health centre, sports hub, library and a range of community centres across the development.

## Phase 1

The first phase of development is well underway, with over 70% of homes already delivered alongside Jemima House Day Nursery, Ermine Street Church Academy, Prestley Wood Academy (special educational needs school), The Watch Office Bar and Kitchen, Co-op, The Pavilion community centre, cricket pitch, community library, multi-use games area (MUGA), parks, play areas, community garden and allotments. It is also home to Alconbury Weald Enterprise Campus, which has over 1.5 million sq ft of business space and will be extended in Phase 3.

The next elements coming forward in Phase 1 include a health centre over the Co-op, new shops in The Glade and the secondary school.

## Phase 2

The second phase of Alconbury Weald will include new homes, open spaces and play areas. It will be delivered in two stages, with the first homes coming forward in the north of this area alongside the 150-acre Prestley Park and the southern link road, which will provide direct access to the A141 and Huntingdon. As subsequent phases are completed, the road will link with The Boulevard.

The southern area of Phase 2 will come forward when the future plans for the A141 are finalised by local transport partners, as the potential route for the realigned road goes through some of the land here.

## Phase 3

In addition to new homes, this phase will include many key amenities including a 'town centre' hub with a health centre, community centre and library, shops and services, and a sports hub. It will also have large areas of parkland, which will mark the area of the old Cold War runway and connect to the future Heritage Area.

## Phase 4 and 5

Currently in the very early design stage, Phase 4 will connect Phases 2 and 3, and Phase 5 will deliver the final area of development in the north-west section of Alconbury Weald.



Phase 1

The Glade

Plans for new shops opposite the Co-op in The Glade local centre at Alconbury Weald have taken a step forward with planning approval granted by Huntingdonshire District Council.



The shops — suitable for a range of operators such as a café/deli, pharmacy, hairdresser/ barber, estate agent or other retail uses — will be located in a single storey building, which has been designed with the flexibility to combine units depending on the requirement of future tenants.

Plans for an interim health centre above the Co-op continue to progress, with a change of use from offices to a health facility approved last year. Discussions are also progressing for a new nursery, which will form the final building within The Glade.



Paul Murfin, Communications and Partnerships Manager for Alconbury Weald master developer Urban&Civic, said: “Alconbury Weald has a fantastic array of facilities and amenities for residents and visitors, including The Gym, The Watch Office Bar & Kitchen, the community library and The Pavilion community centre. We hope the new shops will attract a variety of local, independent retailers and service providers to complement the Co-op.

“Further shops and services will also be coming forward in the ‘town centre’ hub area in the next phase of development.”

The ground for the new shops in The Glade has been prepared, and construction work will start early in 2026. The shops are expected to be available to fit out in late 2026/early 2027.

The planning consent allows the shops to open from 8am to 10pm Monday to Saturday and 10am–6pm on Sundays and Bank Holidays, although the exact opening times will be determined by the individual tenants.



Secondary School Progress

Alconbury Weald’s new secondary school is being delivered in line with the Council’s aspirations around sustainability, energy efficiency and best practice design, and is due to open in September 2027.

Alconbury Weald Church Academy will initially deliver four forms of entry (600 places) and include a performing arts facility as well as a sports hall with outdoor courts and playing fields. The building has been designed to enable the school to expand to eight forms of entry (1,200 places) when required to accommodate future demand.

Work on the new school is well underway, with the building’s foundations and primary structure already complete.

In the first few months of 2026, the ground floor slabs will be poured, the fire protection works to the frame will be completed and the Steel Framing System to create the framework for the external walls, windows and doors will be well underway; closely followed by a suite of other trades.

In addition to making the building weathertight ahead of progressing the internals, work to create the 3G artificial pitch and multi-use games area (MUGA) pitches will be completed.

The construction is being carried out by Morgan Sindall on behalf of Cambridgeshire County Council, working with Diocese of Ely Multi Academy Trust (DEMAT) as the future operator of the school and Urban&Civic as the master developer of Alconbury Weald.



Alconbury Weald Church Academy will be run by the Diocese of Ely Multi Academy Trust (DEMAT). It will start with four forms of entry, filling up each year as it grows.

Adrian Ball, Chief Executive of DEMAT, said: ‘It’s fantastic to see the progress that has been made on the construction of the new school building so far. We’re really looking forward to the steel signing ceremony in January to celebrate the completion of the building’s structural frame. This is an important milestone for the project, and we’re delighted that we’ll be joined by key partners and Ben Obese-Jecty MP as well as pupils from Year 5 at Ermine Street Church Academy, who will be part of our first cohort.’



To find out more or register an interest in enrolling your child in Alconbury Weald Church Academy (if they are in Year 5 or below), visit: [www.demat.org.uk/alconbury-weald-church-academy---our-new-secondary-school](http://www.demat.org.uk/alconbury-weald-church-academy---our-new-secondary-school)



# Garland Park: final section

Garland Park follows the route of one of the airfield's former taxiways and, once complete, it will connect Ermine Street Church Academy with The Glade local centre.

This multi-functional green space will include a walking and cycling path, informal recreational spaces, play opportunities — from wild play and open space to equipped play areas, seating and picnic benches, community orchards, hedgerows, trees, ornamental and shrub planting, wildflowers and other ecological features.

Timberplay — which specialises in innovative, child-friendly playgrounds in unique settings — has been appointed to design the play equipment and features within the final section of Garland Park.

In December, we shared Timberplay's initial proposals at Alconbury Weald's Community Association and Resident Forum meetings, and the proposals were available to view and provide feedback online until 5 January 2026.



Part C: community orchard, new play areas, tree planting, hedgerows, ornamental and shrub planting, wildflowers, seating and recreational space (in design).

Part B: landscaped spaces for relaxing and play within a community orchard (completed autumn 2022).

Part A: play equipment and table tennis tables in a green, landscaped setting (completed spring/summer 2021).



## Summary of proposals

Working within the consented outline design for Garland Park, Timberplay has been designing play experiences that use a variety of accessible and multisensory equipment to ensure play opportunities for all ages and abilities, with particular focus on younger years.

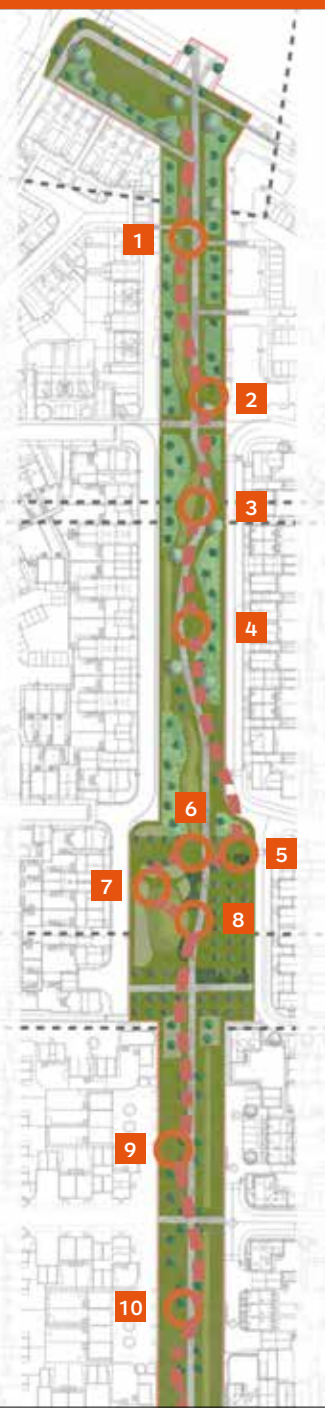
Proximity to neighbouring properties has also been taken into consideration.

Inspired by the site's heritage as a former airfield, the different play zones have been designed to encourage exploration, communication, imagination and physical activity.

Timberplay has designed 10 play stations and asked for thoughts on its approach and play equipment preferences where options were presented:

- 1 **Pairs or Tic Tac Toe:** strategy games to encourage cognitive stimulation, contributing to healthy brain development.
- 2 **Wheelchair Seesaw:** an exciting and inclusive play experience for all abilities.
- 3 **Hangar seating and the Little Flyer:** a space to sit and relax with informal play for younger visitors.
- 4 **Little Speedster or Mini Motorbikes:** for imaginative roleplay.
- 5 **Toddlers' Table and Stools:** for peaceful and contemplative play alone or in small groups.
- 6 **Small Triple Swing and Step Bench:** so older carers can improve their strength while watching little ones swing.
- 7 **Jumping Discs or Seesaws:** a robust alternative to outdoor trampolines or a classic piece of playground equipment.
- 8 **Rope Nest, Climbing Pyramid or Climbing Stairs:** space to climb and hang out with friends.
- 9 **Small Wheelchair Carousel or Jet Plane:** fun, imagination-play pieces to inspire the next generation of pilots.
- 10 **Rocker 'Antenna' and Hut Combination 'Control Tower':** RAF theme play station complete with wobbling platform, ramp, platform and slide.

## PART C



The consultation is now closed, but the full proposals are still available to view on Alconbury Weald's consultation page: <https://consultation.alconbury-weald.co.uk>

## Next steps

The project team is reviewing feedback received and finalising the designs. Work is due to begin on the final section of the park in summer 2026, with the full length of Garland Park open in spring 2027.



Thank you to everyone who came along to chat to the Timberplay team and all those who viewed the information and commented online. We're really excited about the way the final part of Garland Park is shaping up and can't wait to see the ideas become a reality.

Natalie Leigh-Brown Urban&Civic



# Phase 2 update

## Southern Gateway ready for new homes

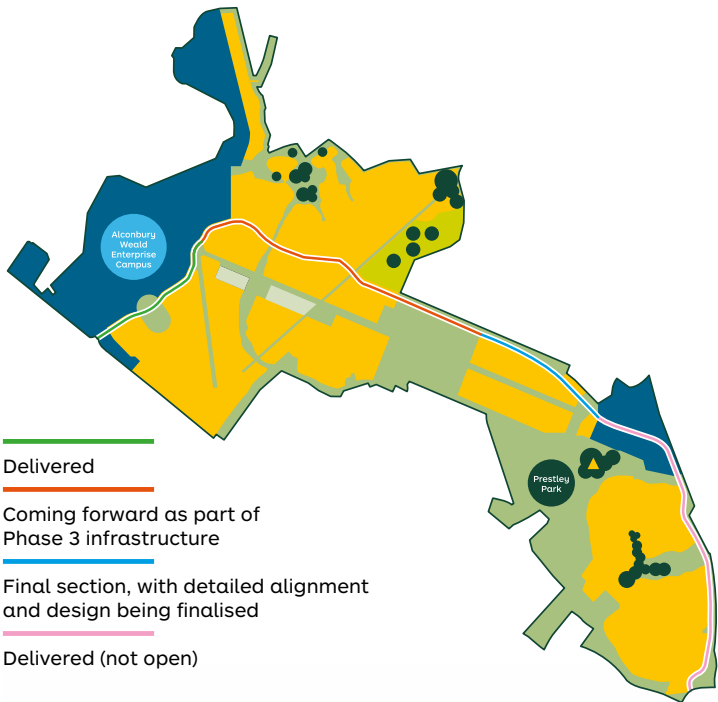
The southern link road, which will join The Boulevard and provide a connection through Alconbury Weald — from Ermine Street and the A1307 to the A141 and Huntingdon — is being delivered in phases and is due to be completed over the next couple of years.

The first section of The Boulevard was delivered early in the first phase of Alconbury Weald. Now the southern section is being created in phases to run through the development. This current section will support the new homes and facilities in the second phase of the development (formerly Grange Farm) and Prestley country park, and will open up for those first homes going up for sale in early 2027.

The Southern Gateway connection to the A141 was completed on time in November to enable the final works to this road to be completed during 2026, to tie in with the new homes: so while the junction will remain closed and the traffic lights inactive for the moment, there should be no further disruption to the wider area when this road is opened up.

The central section of the link road — which will connect the new southern section to The Boulevard — will be delivered as part of the works to bring forward the central hub of the development.

Designs are being finalised by Barratt Homes for the first 535 homes in this phase, 20% of which will be affordable housing. Planning applications are expected to be submitted early in the new year.



### Local students visit construction

The construction of the Southern Gateway is an important milestone for Alconbury Weald and 10 students from St Peter's School spent a morning with Breheny Civil Engineering to find out about the wide range of skills needed to design and install such a major piece of infrastructure.

Co-ordinated by Constructed Pathways as part of its remit to support Alconbury Weald contractors like Breheny to deliver local employment and skills opportunities, students learnt about the design, planning and development stages of the project and the different jobs involved before going to see the construction taking place.

During the classroom session, Breheny shared plans and drone footage to help illustrate the scale of the project, which includes 2km of new carriageway with footpaths, cycleways and streetlights as well as services to support the new homes, and work to connect the Southern Gateway into the A141.

Paul Rzepka, Senior Project Manager for Breheny, said: "We're incredibly proud of the work we do and it's great to be able to share some of our knowledge and insights with the next generation. The students that came along from St Peter's School all have an interest in a potential career in the built environment, but they were surprised at the wide range of careers involved in a project of this scale."

Living locally and aware of the A141 works being undertaken to connect Alconbury Weald, the students had lots of questions about the project and how it will support the wider infrastructure for road users.

Amber Walker, Careers Office Manager from St Peter's School, said: "The Breheny visit at Alconbury Weald was a bit of an eye opener for our students, who had no idea the amount of people or job roles involved to make something like this happen. They really enjoyed being out on the site as it helped to put what they were told during the classroom session into perspective."



The visit definitely sparked the students' curiosity, and following the session they expressed an interest in finding out more from some of Breheny's apprentices and other workers to find out about what they do and how they got into it.

Amber Walker St Peter's School



## Prestley Park

Prestley Park forms part of the second phase of Alconbury Weald and will provide 65 hectares of parkland, a bit smaller than Hinchingsbrooke Country Park (72 hectares). There are a number of inherited features like Prestley Wood that will help shape the future plans along with ideas gathered from earlier consultations.

**The team is working with Nene Park Trust and, in this edition of *Make/News*, we introduce project manager Shelley Cant who will be working with the community to bring Prestley Park to life.**

Hello. I was born and raised in The Bahamas and spent much of my education in the UK. Growing up in beautiful natural environments gave me a deep love of the outdoors and, with a degree in Biology with Oceanography (University of Southampton), I went to work at a small zoo in The Bahamas. There I discovered how much I enjoy helping people connect with nature; whether that's children learning about the different types of animals or adults overcoming a fear of snakes.

I later completed a masters in Biodiversity Conservation (University of Exeter) and worked across The Bahamas, the Caribbean and then the United Kingdom, supporting communities to deliver nature-focused projects.

My family and I now live in Peterborough, and since joining Nene Park Trust as Project Manager, I will be working in partnership with Urban&Civic on the delivery of Prestley country park.

I'm drawn to projects where people and nature thrive together and Prestley Park feels like a once-in-a-generation opportunity: not simply to 'build a park,' but to grow a living landscape that reflects local hopes, creativity and diversity.

Done well, parks become places where toddlers take their first wobbly steps, teenagers find their voice, families make memories, and older residents discover calm and connection. It will take time, care and collaboration but that journey is exactly what excites me.

Over the next couple of years, we'll develop the park with the community — testing ideas, planting the ideas (and the trees!), and setting solid foundations for long-term care. I'll make sure engagement is inclusive and transparent, with clear routes for residents, schools and local groups to help shape decisions.

It is important that Prestley Park delivers something for all ages and abilities. Think sensory gardens with texture and fragrance, step-free routes with rest points and clear wayfinding, 'quiet hours' and calmer zones, and programming that welcomes neurodiverse visitors. We'll create family-friendly loops for little legs, gentle wellbeing walks and playful moments; logs to balance on, hides to peek through and nature-play features that spark imagination.



We also have a fantastic opportunity to provide hands-on contributions through art and science. We'll invite volunteers to help monitor and care for nature from seasonal butterfly counts and bird surveys to logging wildflowers, frogs and fungi, and simple 'mini missions' that build real science skills. Using easy digital tools, community sightings can feed national datasets and help us track how the park evolves and flourishes.

We'll also look at practical habitats such as hedgehog highways, swallow and swift nest boxes, and bird-box cameras for schools — plus outdoor learning spaces that support curiosity year-round. It's a shared canvas and the community will help choose what to prioritise and then roll up sleeves to help make it happen.

I can't wait to start meeting people and discussing how we can grow Prestley Park together.

This park will be better because you shaped it.

### How to get involved

If you would like to find out more and get involved, please register your interest by emailing [natalie.leigh-brown@urbanandcivic.com](mailto:natalie.leigh-brown@urbanandcivic.com)




## Prestley Wood

In the last edition of *Make/News* (Autumn 2025), we introduced Dr James Albone, Inspector of Ancient Monuments at Historic England, who has been working with the Urban&Civic team on Prestley Wood management plans to help preserve the Scheduled Monument — the site of a double moated 13th century manor house — and enhance the woodland setting.

You can find out more about the works carried out to manage the woodland and protect the scheduled ancient monument, and Urban&Civic's partnership work with Historic England to develop the future vision for Prestley Wood — and other videos on Alconbury Weald — on our YouTube channel and website.

 [www.youtube.com/@AlconburyWeald](https://www.youtube.com/@AlconburyWeald)

 [www.alconbury-weald.co.uk](http://www.alconbury-weald.co.uk)





## Phase 3 update

### Plans for the first new homes

Planning applications have been submitted for 450 new homes, two pocket parks and associated infrastructure to the north of the future Runway Park in Phase 3 of the development.

The plans will welcome two new housebuilders to Alconbury Weald. Taylor Wimpey will deliver 272 homes, offering a mix of 1 to 5 bedroom properties including apartments, bungalows, houses and townhouses. Denbury Homes will add 178 homes, comprising 1 and 2 bedroom apartments alongside 2, 3 and 4 bedroom houses. Both developments include affordable housing options, available through affordable rent and shared ownership schemes.

Sustainability is central to both projects, with homes designed to minimise carbon impact and maximise energy efficient. Features include electric vehicle charging capability, cycle storage and networks of footpaths and cycleways to encourage more sustainable and active travel.

In addition to its proximity to Runway Park, landscaped green corridors and pocket parks will provide inviting spaces for residents to enjoy, with biodiversity features such as hedgehog highways and insect hotels supporting local wildlife.

Mike Jenner, Development Manager for Alconbury Weald master developer Urban&Civic, said: “We’re delighted that Taylor Wimpey and Denbury Homes have joined the other housebuilders providing a range of housing types and tenures that meets local needs and requirements of future residents.

“These applications mark an important milestone in the ongoing development of Alconbury Weald and will see the first homes coming forward in this phase, which will include Runway Park, the Sports Hub and Heritage Area.”

The proposals have been designed in line with the Design Code for phase three of the development, which ensures the high standards required for consistency of quality, design and sustainability as Alconbury Weald continues to grow.



Taylor Wimpey street scenes

## Phase 4 update

### Mayor backs growth and a new station

Currently in the very early design stage, Phase 4 will connect Phases 2 and 3 of Alconbury Weald and includes land that has been set aside for a potential new railway station.

In November, following the approval of the Combined Authority’s *Local Growth Plan*, Paul Bristow, the Mayor of Cambridgeshire and Peterborough, visited Alconbury Weald.



The Local Growth Plan identifies Alconbury Weald as part of a key zone for growth: the North Hunts Growth Cluster is one of four new Opportunity Zones that will draw investment into Cambridgeshire and Peterborough.

A new railway station at Alconbury Weald has long been regarded as transformational, providing the transport connectivity needed to unlock growth across the cluster. The Combined Authority has commissioned a study through its Strategic Place Partnership with Homes England, with the support of Huntingdonshire District Council. This study will update the case for the station and identify the investment required.

The Mayor of Cambridgeshire and Peterborough, Paul Bristow, said: “Alconbury Weald is special because it’s not just delivering numbers. There has been a real emphasis on attractively designed homes that feel rooted in a community. It’s a place where people want to live. Too often, that’s not the case with new housing. I want to see the lessons from Alconbury Weald applied in our planning policies for the whole region.

“Of course, even the best developments need the right transport links to realise their potential. The new Southern Link Road is an important step for Alconbury Weald. Yet beyond the roads, cycle routes and bus service, a station would be transformative — both for this former airbase and the whole growth cluster.”



I was really encouraged by the conversations that we had. A railway station can be delivered here and I’m going to do everything I can to make the case.

**Paul Bristow** Mayor of Cambridgeshire and Peterborough



# Ways of living

With a wide range of apartments and houses coming forward, there are lots of ways for people to make Alconbury Weald their home. This includes buying, Shared Ownership, Rent to Buy, renting and affordable rent. In this edition, we provide information about Shared Ownership.

## About Shared Ownership

The Shared Ownership homes at Alconbury Weald are built by various housebuilders, but the sales process is managed by Cross Key Homes, Amplius (formerly Longhurst Group) and Domovo Homes.

These companies specialise in supporting buyers through the process and in their early years when the property is part rented.

Shared Ownership is an affordable, flexible option of purchasing a home and a great way to get a foot on the property ladder if you're currently unable to buy a property outright on the open market.

Shared Ownership is a Government-funded Low Cost Home Ownership (LCHO) product. It allows you to purchase a share in a property, that's affordable to you and pay a subsidised rent for the unsold equity, which remains in the ownership of the company selling the property until you own your home outright.

### Example: Property value £200,000

#### Buy 50%

You purchase a 45% share of the property, plus a 5% cash deposit

**£95,000**  
45% mortgage

**£5,000**  
5% cash deposit

#### Rent 50%

Affordable rent on the remaining share\*

\*Monthly rental charges include building insurance and management company charges

Initial shares can be brought in stages and range from 10 percent up to 75 percent depending on the lease. When the time's right for you, you can staircase and buy additional shares in your home and if your lease allows you can purchase the Freehold interest to take full ownership.

Find out more by visiting:  
[www.amplius.co.uk](http://www.amplius.co.uk)  
[www.crosskeyhomes.co.uk](http://www.crosskeyhomes.co.uk) and  
[www.domovohomes.co.uk](http://www.domovohomes.co.uk)



To find out more about the wide range of homes and ways to live at Alconbury Weald, visit [www.alconbury-weald.co.uk/living](http://www.alconbury-weald.co.uk/living)



# Meet the housebuilders



1

**Campbell Buchanan George**  
01480 220535  
Senliz Road, Alconbury Weald  
Huntingdon PE28 4LY  
**Open** Thurs–Mon 10am–5pm

5

**Morris Homes**  
07484 040412  
142–146 Senliz Road, Alconbury  
Weald, Huntingdon PE28 4FR  
**Open** Thurs–Mon 10.30am–  
5.30pm

2

**Barratt Homes**  
07795 919929  
Leukenor Way, Alconbury Weald  
Huntingdon PE28 4ZR  
**Open** Monday 12:30am–5:30pm  
and Thursday–Sunday  
10am–5:30pm

H

**The Hawkings**  
0300 1246773  
[info@thehawkings.co.uk](mailto:info@thehawkings.co.uk)

3

**David Wilson Homes**  
0333 355 8485  
Senliz Road, Alconbury Weald  
Huntingdon PE28 4LY  
**Open** Thurs–Sun 10am–5.30pm,  
Mon 12.30–5.30pm

4

**Redrow**  
01480 710086  
Senliz Road, Alconbury Weald  
Huntingdon PE28 4LY  
**Open** Fri–Weds 10am–5.30pm  
and Thurs midday–5.30pm



Education is a priority for Alconbury Weald, with schools designed to provide for each stage of learning, all in state-of-the-art buildings inspired by Alconbury Weald's rich heritage and community ethos.

## Jemima House Day Nursery

**Jemima House Day Nursery, based within Ermine Street Church Academy, gives children from birth to five years old a nurturing environment with a focus on health, happiness and wellbeing to help each child reach their full potential.**

During the autumn, Breheny — who were working on the southern link road — donated their time, skills and resources to help transform a section of the Nursery playground. The plans were drawn up by the Breheny team, Natalie Leigh-Brown from Urban&Civic and the Nursery team.

An area of decking was removed, and rubble cleared, drainage installed and the area filled with gravel, topped with woodchips. Planters were then installed and sanded, to make sure they are safe for little hands.

Tracey James, Nursery Manager, said: "We couldn't be more grateful to Natalie and Breheny, who were our knights in shining armour! It has made a huge difference to the outside area. Now we can look forward to planting herbs for the children to use in their mud kitchen play."

The children at the Nursery have also had a jam-packed autumn. In addition to their usual classroom and playground activities, they have been busy fundraising and have raised over £600 this term for a variety of charities.

They raised over £300 for a Children's Cancer charity in September with dressing up and a bake sale and over £100 for Guide Dogs with another dress up day and name the puppy competition. During the Nursery's Teddy Bear Picnic in November, they raised £165 for Children in Need and December's Christmas Jumper Day raised over £40 for Save the Children.



They also had lots of fun making a Shapeasaurus for the annual Scarecrow Festival, inspired by the children's fascination with dinosaurs.

December was filled with Christmas activities, including Candlelit Songs for the children and their families singing some of their favourite festive songs outside in the nursery garden to the light of (battery or solar-powered) candles.

Following the Christmas break, the children are back and excited to find out what 2026 has in store!

[www.jemima-house.co.uk](http://www.jemima-house.co.uk)

## Ermine Street Church Academy

Part of the Diocese of Ely Multi Academy Trust (DEMAT), in partnership with the Methodist Family of Schools, Ermine Street Church Academy is Alconbury Weald's first primary school, with wrap-around care provision by Premier Education at The Hangar Club.

Reflecting on her first term as headteacher providing maternity cover, Emma Heanes, said: "What a busy, productive and fun autumn term we've had! I've had such a warm welcome and it has been wonderful getting to know everyone.

"There is a fantastic atmosphere at the school, and I have thoroughly enjoyed spending time with the children and staff.

"I have been particularly impressed by the enthusiasm the children have for everyday learning, as well as the special events and activities they have enjoyed in the run up to Christmas.

"As well as singing carols at the Alconbury Christmas Market, reception class put on an amazing nativity and we had some impressive knitwear for Christmas Jumper Day.

"Following a lovely festive break, the batteries are recharged and I'm looking forward to the rest of my time at Ermine Street Church Academy.

"I will be sharing highlights from some of the exciting events and activities we have planned for early 2026 in the next edition of *Make/News*."



Ashley Martin, headteacher of Ermine Street Church Academy is currently on maternity leave and wanted to introduce her son, Greyson, who was born in November. Mother and baby are both doing well.





# Prestley Wood Academy

Alconbury Weald's special educational needs and disabilities (SEND) school welcomed its first students in 2024 and now, with 100 pupils, it is at capacity for this academic year. We caught up with headteacher Caroline Place for the latest news from the school.

## Highlights from the autumn term

Prestley Wood Academy won 'Project of the year' for a state school at Education Estates and we are so lucky to benefit from such an amazing building. It has had such a positive impact on the quality of our provision and the difference it makes on our learners and their family's lives.

The new play equipment installed over the summer to help outdoor learning has been a hit with our young people, who have been wrapping up warm to enjoy more time in the fresh air.

This term we have started the Duke of Edinburgh award, a national award that recognises young people's personal skills and world of work skills adapted for our setting. This means our young people can make more of a contribution to the local communities, which is so important for adulthood.

As a whole school we celebrated Yay Day with a focus on mental health and the theme of 'growing together' where parents could come to join in their child's learning for the afternoon and for our new school community to get to know each other.

Our learners worked hard in enterprise lessons over the few weeks to prepare for their Christmas craft stall outside the Co-op on Friday, 12 December. A huge thank you to our local community for coming out in force to support their efforts. Every purchase and kind interaction created meaningful learning opportunities for them while strengthening the bond within our community.

We appreciate your support and look forward to welcoming you at future events.



## Join the Academic Advisory Group

Prestley Wood Academy is now inviting expressions of interest for its new Academy Advisory Group (AAG). Members of the AAG will play a vital role in the life of the school. The Group will act as a critical friend to the leadership team, helping to ensure it remains accountable, inclusive and ambitious for every child.

### Why join?

- Be part of shaping the future of Prestley Wood Academy.
- Represent the voice of the wider community.
- Support school improvement and student success.
- Gain valuable experience in governance and education.

Prestley Wood Academy cannot run without a strong and committed governing body. If you are passionate and want to make a meaningful impact, they would love to hear from you.

For more information or to express your interest, please contact Jo Tregent at [jtregent@prestleywood.org.uk](mailto:jtregent@prestleywood.org.uk)



# Urban&Civic volunteer day

Before the start of the autumn term, 19 volunteers from master developer Urban&Civic's London head office and developments at Waterbeach, Houlton, Middlebeck, Milton Keynes and Corby joined colleagues from Alconbury Weald to carry out essential maintenance work to prepare Prestley Wood Academy for the new school year.

Alconbury Weald's state-of-the-art special educational needs and disabilities school opened last year, and after the summer holiday a number of wooden structures needed water-proofing and grounds maintenance was needed to freshen up the school grounds before the autumn term started.

The team contributed nearly 100 hours between them and as well as painting three sheds, wooden play equipment and planters, they cleaned windows, weeded and tidied up the outside space.

Caroline Place, headteacher for Prestley Wood Academy, said: "We have an amazing new school at Alconbury Weald, but the ongoing maintenance can be quite time consuming and costly, so it's fantastic that the volunteers from Urban&Civic were able to spend a whole day sprucing up the grounds and wooden play equipment ready for the start of the new school term. They worked really hard, and we were delighted with the results."

Urban&Civic's volunteer initiative gives its employees three days a year (on top of their annual leave allowance) to actively support a charity of their choosing or join one of the company's organised volunteer days, like the one at Prestley Wood Academy.

Natalie Leigh-Brown, Senior Community Development for Alconbury Weald, said: "Our staff have a wide range of skills and lots of enthusiasm, and it's great to bring those together to support a local charity or non-profit organisation. It was great to spend some time outside, working with colleagues from other developments to help make the school grounds a welcoming space for new and returning pupils."





# Alconbury Weald Water Savers

## Save water. Save money

Taking showers. Doing the laundry. Washing the dishes. They all use lots of water — *hot* water. The more water you use, the more you pay to heat it. That's a double cost. So, by using more than you need, you're not just wasting water but money too.

By making a few small changes to how you use hot water, you can save water and money.

### Environmental benefits

Every drop saved makes a difference, not only to your water and electricity bills, but also to the environment.

All the water you use is taken from local sources, including groundwater reserves, reservoirs and rivers such as the River Great Ouse. So, the less you use, the smaller the impact on our natural habitats.

You are also helping reduce your carbon footprint by reducing the emissions from cleaning, transporting and heating the water in your home.

### Water Savers ambassador

As part of the ongoing initiative, Alconbury Weald Water Savers ambassador Tim was out in the community in December, helping residents sign up to the Water Savers campaign.

Tim said: "It was lovely to chat with residents and suggest small daily changes they can make to use less water and save money. Many of the people I spoke to were aware of the Water Savers campaign and receptive to ideas to reduce their water consumption.

"The start of the New Year is a great time to start developing new habits, especially ones with financial and environmental benefits. I would encourage everyone to try the Water Savers calculator, as I think they will be surprised at how impactful small changes can be."



\*The Water Savers calculator uses figures based on the average family home in Alconbury Weald. Electricity and water bill calculations use averaged data from Uswitch and Anglian Water respectively.



### Start saving now

The campaign is supporting Alconbury Weald as part of Urban&Civic's commitment to create a sustainable community, but we encourage anyone interested in saving water to try the calculator and see what changes they can make.

[www.alconbury-weald.co.uk/water-savers](http://www.alconbury-weald.co.uk/water-savers)

### Want to know more?

Get in touch with our friendly water-saving experts.

Email: [watersavers@alconbury-weald.co.uk](mailto:watersavers@alconbury-weald.co.uk)



Since the start of the campaign:

**Around 20% of households have signed up**  
**Average savings:**  
**Monthly: £75.92 and 1,815 litres**  
**Annually: £911.01 and 21,785 litres**





# Latest news

Alconbury Weald Enterprise Campus is a dynamic place for businesses of all shapes and sizes — whether starting up, relocating or expanding — companies can rent flexible space for research and development, production and office accommodation in one of the Incubator buildings, or design and build bespoke facilities to meet their specific requirements, supported by the design, development and project teams at Urban&Civic.



## Hunts Business Awards

On the evening of 20 October 2025, over 170 representatives from local businesses attended a ceremony at Burgess Hall to hear the results of the inaugural Huntingdonshire Business Awards.

Organised by Invest in Huntingdonshire on behalf of Huntingdonshire District Council, the awards were designed to showcase and celebrate some of the industrious, hardworking and enterprising businesses in the region. Categories included innovation, carbon reduction, social impact and waste reduction, as well as accolades for best new business, small business and large-scale business of the year.

Alconbury Weald Enterprise Campus based MM Flowers impressed the judges with its ethos, quality and approach — revolutionising the cut flower industry by raising standards, championing innovative approaches, utilising energy-efficient solutions and empowering its workforce — and took the award for Large Scale Business of the Year.

Urban&Civic, master developer for Alconbury Weald, sponsored the *Business Innovation Award*, which recognises a business that has made remarkable progress in its field, whether through the development of an innovative new product or the introduction of a groundbreaking process or system to enhance an existing business. It celebrates those who are driving change, improving efficiency, and setting new standards of excellence.

On presenting the award to Glebe Farm Foods, Paul Murfin, Communications and Partnerships Manager for Urban&Civic said: “We’re delighted to have sponsored the *Business Innovation Award* and are thrilled that it has gone to Glebe Farm Foods.



“Business innovation was a fiercely fought category with the judges impressed by the range of initiatives being utilised by the companies shortlisted for the Award.”

Companies shortlisted for the Award were Elliptical Design Limited, MM Flowers, Paragraf, Phoenix Sustainable Investments, RBR legflow and Social Media WOW Ltd.

Full details of the winners of the Huntingdonshire Business Awards 2025 can be found at: <https://eventsandpr.co.uk/huntingdonshire-business-awards/finalists-2025-2/>

## Meet the neighbours: Roythornes Solicitors

A national law firm with offices strategically located across East Anglia and the Midlands, Roythornes was established 90 years ago to help landowners and farmers maximise their opportunities and protect their assets for future generations. This is still a core part of the business, with additional services and sectors added as it has grown.

Roythornes established a base at The Incubator at Alconbury Weald Enterprise Campus in Summer 2017. Three years later, as part of its growth strategy, it took over an entire wing on the ground floor of the second Incubator building, nearly quadrupling its floor space to around 3,800 sq ft. As well as individual offices, client meeting rooms and a conference facility with capacity for 35 people, its Alconbury Weald headquarters also has a café and large reception area to welcome visitors.

Ann Barrasso, Operations Director at Roythornes said: “We chose Alconbury Weald because it was a growing site with a 20-year plan of its own. We set up at the Enterprise Campus in 2017 with four people and we’re now at 64 people. The Alconbury Weald office gives us a real foothold in this region and our event space is great for meeting existing and potential clients.”

The office and its location have also proved popular with staff. As well as a bright, modern and vibrant open-plan workspace, and proximity to the wide variety of innovative businesses at the Enterprise Campus, staff enjoy the amenities and sports facilities at Alconbury Weald.



Being able to integrate into the community and give something back is important to the Company. In addition to a range of fundraising initiatives, Roythornes’ staff are given a social and environmental wellbeing day each year, which they can spend volunteering in the community. Events like the MAGPAS Air Ambulance tree planting have been a great way to meet other people at the development whilst supporting a local charity.

The accessible location is also important for Roythornes, with some members of staff living at Alconbury Weald and enjoying a brief walk or cycle ride to the office as their daily commute. For others, the bus stop outside The Incubator and car sharing initiatives help commuters make sustainable transport choices.

Ann concluded: “When I think about the decision to move here eight years ago, I can see what a great decision it was. It’s a wonderful site here at Alconbury Weald Enterprise Campus. It’s great for the staff and attracting new talent, and clients can reach us easily.”

Find out more at [bit.ly/Roythornes](https://bit.ly/Roythornes)



At its heart, Alconbury Weald has been designed to encourage a healthy, sustainable lifestyle, with the right infrastructure and services being put in place for people to lead low-carbon lives as the development rolls out.

The Urban&Civic team is working with *smart journeys*, the Sustainable Travel Planning Team hosted by Cambridgeshire County Council, to help deliver a place that puts active and sustainable travel first and encourages people to leave their car at home.

## Ride Away

Alconbury Weald has been designed with an extensive network of footpaths and cycleways throughout the development and connecting into the wider area. To encourage residents to use active travel to get out and about, *smart journeys* has a range of incentives and initiatives, including bike hire, 1-2-1 cycle training, learn to ride sessions, bike servicing and bike maintenance training.

### Bike hire supports App-y cyclists

App Bikes were introduced to Alconbury Weald in the summer to help residents and visitors explore by bike, with user numbers rapidly exceeding expectations.

Alconbury Weald has six manual bikes and two e-bikes, which can be found outside the Co-op, and at Swynford Park and Crescent Park. In the first four months, almost 100 people have signed up and the App Bikes are in regular use.

Local resident, Paula said: "As a regular App-Bike user I have found the scheme brilliant for my short commute to work at Prestley Wood Academy. The location at the Co-op is perfect and then drop off at Crescent Park. The bikes are well maintained, easy to ride and the App works well. There are always bikes available to use and the same bike is always available for my return journey. A great scheme and an added bonus is that the first half hour is free of charge, which is perfect for my short journey to work."

The bikes can be used throughout the day and taken anywhere but must be returned to one of the App Bike stations. Further locations and bikes will be made available as the development grows.

Marianne Spilling from *smart journeys*, said: "The response to App Bikes has been fantastic. They offer a cost-effective way to explore the development and local area without having to invest in your own bicycle. All you need is a cycle helmet as everything else is included with the hire."

App Bikes are available for anyone over 18 years old to use. Users just need to download the free App, register (with proof of age and address) up to two working days in advance of first use and get pedalling.

Urban&Civic is funding the first 30 minutes, after which it costs £1 per 30 minutes.



## Travel Survey

Each October, *smart journeys* carry out its annual travel survey to find out more about travel choices of people living and working on the development and gain a better understanding of the barriers that prevent commuters from using more sustainable modes of transport.

The data collected helps influence future transport decisions and public transport improvements across the local area. It will also be used to inform future travel incentives *smart journeys* offer to residents and employees at Alconbury Weald.

A key takeaway from the survey results was in relation to the bus times and the need to make them work for the community, particularly in relation to connections with other public transport. This is not a straightforward process, but the team is working with travel partners to respond to feedback.

## Share Away

Lift sharing is a great way to save money, reduce CO<sub>2</sub> emissions and reduce stress — as a driver, passenger or both.

If you haven't joined yet, simply follow the steps below:

- 1 Download the Mobilityways App
- 2 Open the App and 'Search for a community to join'
- 3 Search for 'Urban&Civic' and click to join 'Alconbury Weald Liftshare'
- 4 Join with your email or sign in with Apple or Facebook
- 5 Add in your details i.e. your journey, if you are a driver or passenger (or both)
- 6 Let the App do the rest and find matches!

The *smart journeys* team has been attending resident and business events to promote the closed community group for Liftshare and explain how the car sharing scheme works — and they'll be back in the New Year!

If you live or work at Alconbury Weald and would like them to come along and discuss the Mobilityways initiative with your group or colleagues, please email [alconburyweald@smartjourneys.co.uk](mailto:alconburyweald@smartjourneys.co.uk)

Share  
Away

## LocalGO

Residents at Alconbury Weald can also join LocalGO to access discounts to help them get about more sustainably. This includes:

### ● Cycle Solutions discount

LocalGO members can access 8% off gift vouchers at Cycle Solutions.

### ● E-bike savings

Save £5 on monthly subscription costs with Hurrecane eBikes.

### ● Halford discount

Enjoy 7% members discount in store and online.

### ● Railcards

Save on selected Railcards and get up to 1/3 off fares.

### ● Rent-a-car discount

Save up to 10% on car and van hire.

Please note, the password is case sensitive. Find out more about travel and transport at [www.alconbury-weald.co.uk/travel](http://www.alconbury-weald.co.uk/travel)

## Tap Away

**10 Free Bus Tickets: exclusively for Alconbury Weald residents and employees.**

Residents and employees at Alconbury Weald can now enjoy 10 free journeys on the AW1 bus service operated by Dews Coaches. This offer is exclusively for people who live and work at Alconbury Weald — all you need to be is a resident or an employee!

How to claim your free tickets:

**Step 1:** Visit [www.localgo.co.uk/join](http://www.localgo.co.uk/join)

**Step 2:** Create your free LocalGO account by entering your personal details

**Step 3:** Use [alconbury@localgo.co.uk](mailto:alconbury@localgo.co.uk) as the scheme password

**Step 4:** Log in to LocalGO to access the offer and redeem your benefits.

For timetable and bus route information, visit <https://dews-coaches.com/local-bus-service.php> or call 01487 740241.

Offer ends 31 March 2026.



# Regular clubs, groups and classes

Alconbury Weald hosts a wide range of clubs and classes that cater for all ages and abilities. From play groups and dance classes for little ones, to youth club for young people and a range of fitness classes and social clubs for adults, there is something for everyone.

We've provided a list of all the Alconbury Weald clubs, groups and classes currently taking place to help you find the ones you might be interested in joining.

[www.alconbury-weald.co.uk/whats-on](http://www.alconbury-weald.co.uk/whats-on)



Tuesday Club is a friendly group that enjoys a weekly cuppa, card games and quiz. In December, their festive celebration included an afternoon tea with finger sandwiches and homemade cakes, and each member received a Christmas present. A special gift was presented to Pete — one of the organisers — for all his hard work creating fun quizzes each week, which entertain and give the 'little grey cells' a workout.



Tuesday Club



Weald Thing



## Social

- **Alconbury Weald Community Association** — 7.30pm on the first Wednesday of the month on Teams or in The Pavilion (check The Warbler for details)
- **Alconbury Weald Allotment Society** — times/locations vary
- **Board Games** — 7pm on the first Tuesday of the month in The Watch Office
- **Book Club** — times/locations vary
- **Business Owners Group** — times/locations vary
- **Chess Club** — 5pm on Sunday in The Watch Office
- **Coffee Morning** — 11am on the second Friday of the month in The Club
- **Community Garden Club** — times/locations vary
- **Photography Club** — 7pm on the third Tuesday of the month in The Watch Office
- **Friends of ESCA** — times vary/at Ermine Street Church Academy
- **Spotlight Theatre** — 7pm on Mondays and Tuesdays in The Club
- **Tuesday Club** — 1.30pm on Tuesday in The Pavilion
- **Weald Thing: resident band** — times vary, in The Pavilion







## Youngsters

- *Alconbury Weald Brownies and Guides* — 6pm and 7.30pm on Wednesday in The Pavilion
- *Alconbury Weald Youth Club* — 6pm for Yr 4–6 and 7.30pm for Yr 7–11 on the second Friday of the month in The Pavilion
- *Hot Shots inclusive tennis* — various times on Tuesday in The Pavilion
- *Kid's Yoga* — from 4pm on Monday in The Pavilion
- *Little Cubs* — 9am on Thursday in The Pavilion
- *Roots and Wings* — 10am on Wednesday in The Pavilion
- *Stay and Play* — 10am on Friday in The Club

Roots and Wings



## Sports/fitness

- *Alconbury Flyers: running club* — times/locations vary
- *Alconbury Weald Walking Group* — 12.30pm on Monday at Swynford Park
- *Alconbury Weald Walking Netball* — 9.30am on Tuesday at Swynford Park MUGA
- *Alconbury Weald Football Club* — training 8pm on Monday/9pm on Thursday at Hinchbrooke and matches on Saturday (times/locations vary)
- *Alconbury Weald Netball Club* — 8pm on Tuesday at Hinchbrooke School
- *Fitness Pilates* — 7.40pm on Monday in The Club
- *Mum and Tots Fitness* — 10.30am on Thursday at The Pavilion
- *Pregnancy Fitness Pilates* — 8.45am on Monday at The Pavilion
- *Right Start 3* — Strength and Balance — 9am on Friday in The Pavilion
- *Sawtry and Alconbury Weald Cricket Club* — times vary at The Pavilion and Cricket Pitch
- *Tai Chi for Health and Energy* — 12.30pm on Saturday in The Pavilion
- *Zara Fitness* — 9am on Tuesday in The Pavilion

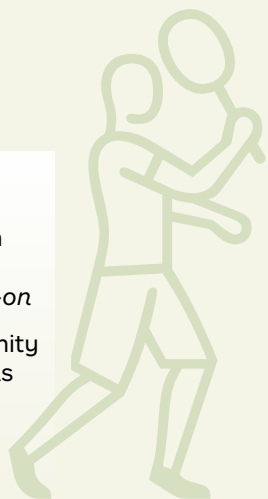


Tai Chi

### Find out more

For the full listing, more information and booking details, visit [www.alconbury-weald.co.uk/whats-on](http://www.alconbury-weald.co.uk/whats-on)

If you have a club, group or community activity at Alconbury Weald that has not been listed, please let us know and we will add it to the **What's On** page and provide an update in the next edition of *Make/News*.



# Sawtry & Alconbury Weald Cricket Club

The Pavilion and cricket pitch lie at the heart of the first phase of Alconbury Weald and are home to the thriving Sawtry & Alconbury Weald Cricket Club. Here **John Dudley**, Chair of the Cricket Club, provides an overview of last year's season and looks ahead to plans for 2026.

The 2025 cricket season saw the club really hitting its stride after a couple of years of integrating into the new ground and community at Alconbury Weald.

With numbers for the 2025 season looking good, we expanded the club further. For the adults, we entered two Saturday teams, a Sunday team and a midweek team. For the juniors we were able to enter teams at U9s, U11s, U13s and U15s age groups. We also ran ECB All-Stars late summer for 5yr to 8yr olds, which was very successful.

On the junior side, entering this many teams was a fantastic achievement considering the loss of one of our main coaches, but we were grateful for some amazing parent helpers during the year. These helpers allowed us to also run very successful training sessions on Friday nights at Alconbury Weald, with some evenings having over 40 children attending during the 2-hour sessions.

All the adult teams performed well, considering that we're still perhaps 3 or 4 players short to have enough depth to cover all the asks on Saturdays and Sundays, especially during the difficult August month when families take holidays. Having a Development Team on Saturdays was the right approach to grow the club and give the older juniors some games, so we'll concentrate more on recruitment during early 2026 to help these teams even more.

Plans for 2026 include building a double-lane bowling net on the Alconbury Weald ground. We've applied for funding and we're hopeful we'll achieve our goal. We should know soon if this is likely to go ahead.

Finally, we decided to do something different for the presentation evening this year and had a BBQ at The Watch Office Bar & Kitchen on a Sunday afternoon in late September. Luckily the weather was kind to us, and it was a very successful and well attended event. Thank you to everyone at The Watch Office Bar & Kitchen for helping.

We're looking forward to another successful year in 2026! If you're interest in playing — or supporting the club in some way — please get in touch by emailing [sawtrycc@yahoo.com](mailto:sawtrycc@yahoo.com).





# Recent events

The community also enjoys a variety of events each year organised by Urban&Civic and Alconbury Weald Community Association to bring people together to share food, music, entertainment and activities.

## Heritage Open Day

As well as an archaeology exhibition, bunker tours and presentations, residents and visitors to Alconbury Weald's Heritage Open Day (Saturday, 13 September) were treated to a flypast from the Battle of Britain Memorial Flight. The impressive Lancaster did three circuits over Alconbury Weald, providing a poignant tribute to the former airfield's military past.

The guided tours of the Avionics Building — the military bunker that played a key role gathering intelligence from the U2 Spy Plane's successor, the TR1 reconnaissance aircraft, during the Cold War — always prove popular with visitors. In previous years, the tour has welcomed back servicemen based at the airfield during the Cold War, and this year saw the return of one of the team that helped build the Avionics Building, which added an element of poignancy to the knowledge and experience shared.

A great time was also had at the Family Fun Day, which ran in tandem and included food trucks, stalls, games and live music.

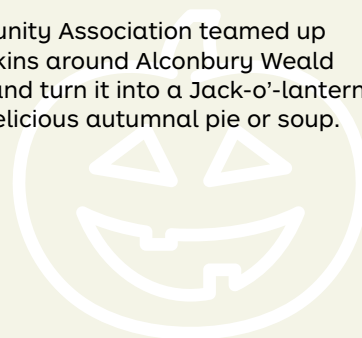
## Scarecrow Festival

Creative residents showcased their talents at the fifth annual Scarecrow Festival (20-28 September) with a fantastic array of creations inspired by fictional characters and famous people, with the first prize going to The BFG, closely followed by Pikachu in second and a large Gingerbread Man in third.



## Halloweald

Urban&Civic and the Community Association teamed up with Co-op to scatter pumpkins around Alconbury Weald for residents to take home and turn it into a Jack-o'-lantern for Halloween or create a delicious autumnal pie or soup.



## Remembrance Sunday

Each year, the Alconbury Weald community joins representatives from the RAF to honour those who served at the former airfield during its military past.

On 9 November, all ages gathered outside Ermine Street Church Academy and formed a procession to The Watch Office to pay homage to the service and sacrifice of all those who have fought to protect our way of life.

Following a two-minute silence at 11am, Rev'd Rob Paddison from Alconbury Weald Church led a short service of reflection, prayer and the laying of wreaths before concluding with both the British and American National Anthems. Attendees were also invited to place a poppy while the wreaths were laid out on the platform by Memorial Green.

The backdrop of The Watch Office, historically used by RAF Command to oversee the missions leaving the airfield — counting aircraft out and counting them in again, noting the losses of those that did not return — was especially poignant.

The Green outside The Watch Office also provides a focus for Second World War remembrance and will include a future memorial to both the American and Royal Air Force crews who served there. The memorial will also mark the site of a tragic accident in May 1943 when 19 young men lost their lives in an explosion whilst aircraft were being prepared for a mission.



## Christmas Market kicked off the festive season

Despite a rainy start, residents and visitors braved the weather to celebrate the start of the festive season at Alconbury Weald's Christmas Market (Saturday, 29 November). As well as a chance to stock up on unique gifts and decorations, and enjoy delicious, mulled wine and hot drinks to keep the cold at bay, children from Ermine Street Church Academy choir set the festive mood by singing carols and seasonal songs.

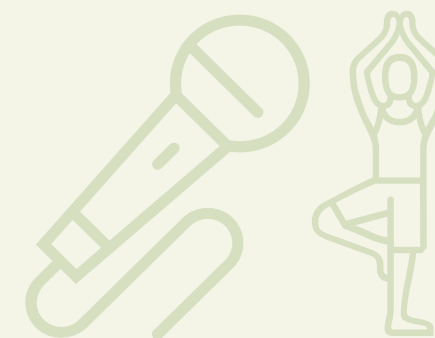
Alconbury Weald Community Association arranged a fantastic selection of stalls offering festive gifts, handmade crafts and tempting seasonal treats. From wooden, clay and stained-glass crafts and decorations to toys, bath and shower products, sweets, cakes and bakes, local spirits, beer and mulled wine, there really was something special for everyone. Santa's Grotto — a first for Alconbury Weald — was also a hit!

Celina Jacques from Alconbury Weald Community Association, said: "Our Christmas Market goes from strength to strength each year and I'd like to thank returning and new stallholders who brought a fantastic array of festive gifts and goodies. We'd also like to extend a special thanks to John Adams Leisure for helping Santa stock his Grotto in a festive first for Alconbury Weald. The Christmas Market is a highlight of the community calendar and a magical way to start the festive season."

## Save the Date

**Community Wellbeing Day:** from 10am on Saturday, 24 January 2026 — see back cover for details.

**Heritage Talk:** 10.30am on Saturday, 14 February in The Club — explore the past of RAF Alconbury with Jeff Hawley from the Airfield Research Group. No booking required but seating is limited, so early arrival is advised.





# Community noticeboards

Alongside stylish homes for people in landscaped settings, Alconbury Weald is providing a mosaic of habitats for a diverse range of wildlife. The most recent installations are community noticeboards with an integrated bug hotel providing a safe haven for some of the development's smallest inhabitants.

Made from English-grown cedar, the bug hotel forms the border of the freestanding noticeboards and provides a durable and sustainable habitat for insects and pollinators. Different compartments are incorporated within the structure, with a variety of materials used to cater for different species.

This includes bamboo tubes/holes in logs with different diameters to cater for pollinators of different shapes and sizes such as flower bees, leafcutters and mason bees. Pinecones provide shelter for spiders and insects such as beetles, millipedes and earwigs, while straw provides a dry nest for pollinators such as lacewings and holes in dried clay cob create an alternative habitat for solitary bees.

Commissioned and installed by Encore Estate Management at the request of Alconbury Weald Community Association, the environmentally friendly noticeboard was designed and crafted by Cambridgeshire-based Green Earth Habitats using timber responsibly sourced from sustainable forests. This ensures premium habitats that actively contribute to the conservation of the UK's forests and promote a sustainable future.

The noticeboard/bug hotels are located outside Ermine Street Church Academy and the community orchard at Elizabeth Walk.

Natalie Leigh-Brown said: "Establishing a mosaic of habitats for wildlife at Alconbury Weald is really important and we're delighted Green Earth Habitats has created these innovative bug hotels that also has a practical use for the community."

Anyone wanting to advertise community events and activities on these new noticeboards should contact Alconbury Weald Community Association through its Facebook page.



Your Community Association is run by residents, for residents, making Alconbury Weald somewhere special.



## Alconbury Weald Community

Association believes the people of the community coming together is the best way to help shape and enhance Alconbury Weald into somewhere you'd be proud to call home. They do this by encouraging anyone to get involved with their unique skills, passions and perspectives. Everyone is truly welcome to get involved — *join in!*

## What do they do?

- Organise and run Community Events
- Run the Alconbury Weald Hardship Fund
- Talk directly with the master developer, Urban&Civic, on improvements to the area i.e. off-lead dog area, additional notice boards
- Talk directly with Encore on issues that need fixing
- Provide monthly meetings for residents to have their say directly with Urban&Civic and Encore
- Share news and development updates.

## How to get in touch

- [AlconburyWealdCA@gmail.com](mailto:AlconburyWealdCA@gmail.com)
- [www.OurAlconburyWeald.co.uk](http://www.OurAlconburyWeald.co.uk)
- Search on Facebook for *Alconbury Weald Community Association*



# Community Wellbeing Day

**From 10am on Saturday, 24 January 2026 at Alconbury Weald**

Our Community Wellbeing Day offers some great ways to relax, recharge and re-energise as you head into the new year.



### Health and wellbeing sessions

- 10am: Hot Shots tennis ages 3–12.
- 10.30am teen/adults walking tennis
- 10.30am: opportunity to view The Gym and meet some of the team
- 11am: back pain and sciatica workshop — book in advance at [info@mooreperformance.uk](mailto:info@mooreperformance.uk)
- 12.30pm: Tai Chi — book in advance [cambstaichi@gmail.com](mailto:cambstaichi@gmail.com)
- 1.30pm: meet at Swynford Park for a bird spotting walk for RSPB *Big Garden Birdwatch*
- 2.30pm: craft session

All sessions are free and at The Pavilion unless otherwise stated.



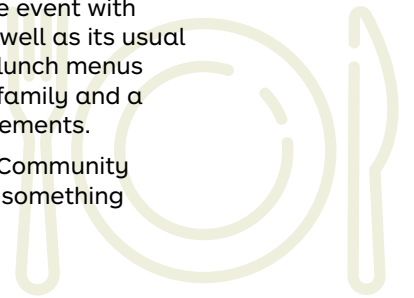
### Refreshments at The Watch Office Bar and Kitchen

10am: join the football team for £5 bacon sandwiches or veggie alternative.

The Watch Office Bar & Kitchen will be open throughout the event with hot and cold drinks as well as its usual breakfast/brunch and lunch menus catering for the whole family and a range of dietary requirements.

Join us for our packed Community Wellbeing Day: there's something for everyone!

No booking required unless specified.



## Contact

**Alconbury Weald**

Master Developer

Urban&Civic

Urban&Civic  
The Club, The Boulevard  
Alconbury Weald, Huntingdon  
Cambridgeshire PE28 4XA

E: [info@alconbury-weald.co.uk](mailto:info@alconbury-weald.co.uk)  
T: 01480 413141

[www.alconbury-weald.co.uk](http://www.alconbury-weald.co.uk)  
[www.urbandcivic.com](http://www.urbandcivic.com)

Follow us on Instagram:  
[alconburyweald](https://www.instagram.com/alconburyweald)

Follow us on Facebook:  
[www.facebook.com/alconburyweald](https://www.facebook.com/alconburyweald)