

MakeNews



First Christmas Market

Work starts on last section of Garland Park



Find out how to help hedgehogs through the winter



Highlights from businesses at Alconbury Weald



A positive start to an active and healthy new year





- Alconbury Weald update**
- 04 Garland Park update
- 06 Future Green Spaces
- 08 Grange Farm archaeology
- Living**
- 10 Meet the housebuilders
- Education**
- 12 Jemima House Nursery
- 13 Ermine Street Church Academy
- 14 Education Campus
- Nature watch**
- 16 Hedgehog focus
- Enterprise Campus**
- 18 Festival of Fresh
- 19 Invest in Huntingdonshire Manufacturing Summit
- 20 Magpas Air Ambulance opens new airbase
- 21 Marshall Land Systems relocates to the Campus
- Travel and transport**
- 22 Encouraging sustainable travel
- Community**
- 24 Recent events and activities
- 32 **Contact**

Hello and welcome to our Winter 2023 newsletter, which provides an update on the latest news and developments at Alconbury Weald.

Green spaces are central to the vision for Alconbury Weald and as well as progressing plans for the final section of Garland Park, we've been looking at the next strategic green spaces coming forward — and introduce the Nene Park Trust team, who will be sharing their expertise and experience in helping us deliver Prestley Country Park.

We also welcome Hartford Hedgehog Rescue, which has relocated to Alconbury Weald, and share top tips for supporting these amazing creatures.

Education is also a priority for the development. As well as the latest news from Jemima House Nursery and Ermine Street Church Academy, we provide an update on Prestley Wood Academy, Alconbury Weald's special school, which is on track to open next September.

Alconbury Weald Enterprise Campus continues to flourish, and we share insights from the Festival of Fresh and Invest in Huntingdonshire's Manufacturing Summit, welcome Magpas Air Ambulance and support Marshall Land Systems' plans to establish a new bespoke facility here.

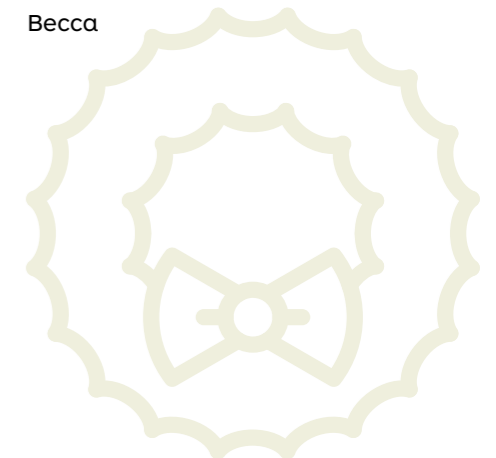
We also share some of the highlights from the community event calendar, including the Scarecrow Festival, Wild Weald, Heritage Open Day, Remembrance Sunday and our first Christmas Market, which put us all in the festive mood!

Looking ahead to the New Year, we hope many of you will be able to come along to our Community Wellbeing Day in January and invest some time and energy into healthy bodies and minds for 2024.

Whether you're spending your first, or your fifth Christmas at Alconbury Weald, or in the villages around the development, we hope you will feel the warm fellowship of your neighbours at this special time of the year. We know it's also a tough time for many and a time when we think of those no longer with us. We share on page 29 some important groups who are always on hand to help, alongside friends, family and neighbours.

Wishing you a merry Christmas and a happy, healthy New Year.

Becca



MakeNews

MakeNews is produced by Urban&Civic — master developer of Alconbury Weald — to update residents and our neighbouring communities on progress and news from the growing community. It is distributed to Alconbury Weald, Alconbury village, Alconbury Weston, the Stukeleys and Abbots Ripton, as well as being available in housebuilder marketing suites and other public places across Alconbury Weald.



Rebecca Britton
Communications, Communities and Partnerships
E: rbritton@urbanandcivic.com
T: +44 (0)1480 413 141 / M: +44 (0)7739 339 889
alconbury-weald.co.uk / urbanandcivic.com
Follow us on Twitter: @AlconburyWHomes @beccaU&C @AlconburyCampus
Follow us on Instagram: [alconburyweald](https://www.instagram.com/alconburyweald)

Garland Park update



Garland Park will provide a landscaped green space along the route of one of the airfield's former taxiways, connecting Ermine Street Church Academy with The Glade facilities, including the Co-op and future nursery.

This multi-functional green space will include:

- informal recreational spaces.
- a range of play opportunities along the length of the park — from wild play and open spaces, to equipped play areas.
- community orchards.
- hedgerows, avenues of trees, ornamental and shrub planting.
- wildflowers and other ecological features.
- a walking and cycling route, with seating and picnic benches.

Phase 1, completed in Spring/Summer 2020, provides play equipment and table tennis tables in a green, landscaped setting.

Phase 2, completed in Autumn 2022, provides landscaped spaces for relaxing and play within a community orchard.

Phase 3, which is due to be completed in 2025, will include a community orchard, new play area, tree planting, hedgerows, ornamental and shrub planting, wildflowers, seating and recreational space.

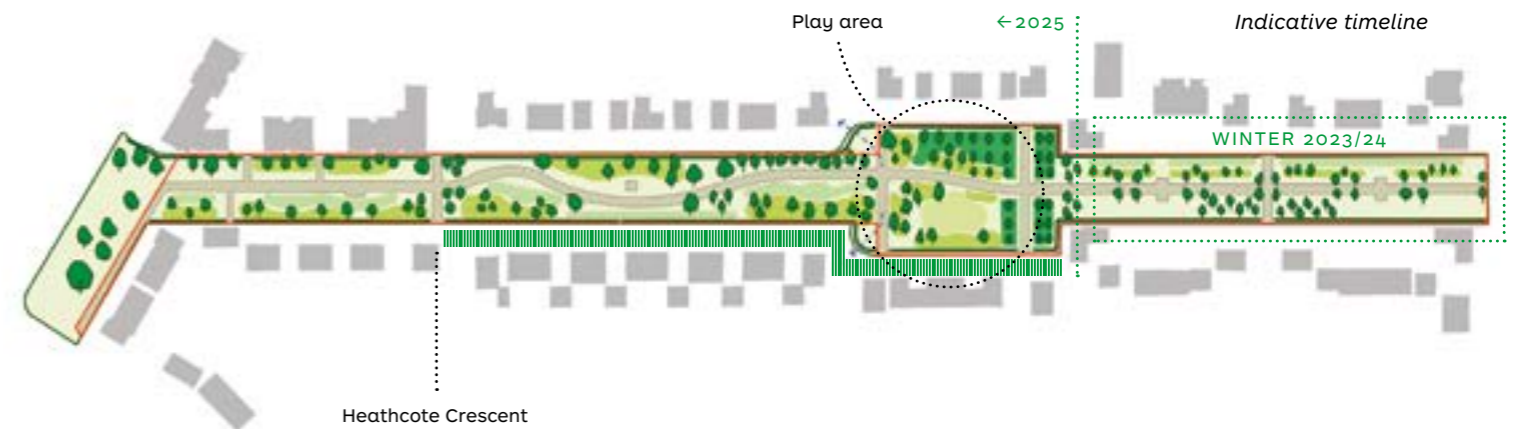
The first part of Phase 3 in 2024 will put in place the main earthworks. The second part in 2025 will see the walkways and play area installed and the landscaping complete.



What is happening?

Work started on the southern end of Phase 3 of Garland Park in Winter 2023. This is the start of an extensive programme of works that will transform the current construction road into a landscaped walkway leading to the new play area.

Our contractors will carry out this work with as minimal impact as possible, and the bulk of the heavier earthworks will be carried out in 2024, with the Park as a whole complete by Summer 2025.



What next?

A programme of works is being developed for the rest of Phase 3 of Garland Park and we'll share more information on timing as it becomes available. We will also be consulting on plans for the new play area in due course.

Phase 3 of Garland Park is expected to open in 2025, when all work within this section has been completed.

Get in touch

If you have any queries about the plans for Phase 3 of Garland Park, please get in touch with the team by calling 01480 413141 or emailing info@alconbury-weald.co.uk

Future Green Spaces

Green spaces are central to the vision for Alconbury Weald, with four strategic green areas coming forward at key milestones throughout the development: the cricket pitch and Watch Office Green, which were delivered early in the development; Runway Park and Prestley Country Park, the next parks coming forward; and the Sports Hub, which will follow in 2028/29.

Alongside spaces for people, Alconbury Weald has been designed to deliver a Net Gain for Nature, with current plans for a 20% increase in biodiversity. This will be supported through the ongoing management of these green spaces.

Alconbury Weald's strategic green spaces



- 1 The Cricket Pitch and Watch Office Green
- 2 Runway Park
- 3 The Community Sports Hub
- 4 Prestley Country Park

Runway Park

Runway Park will form a central part of the third phase of the development and marks the historic line of the runway. The team is working on a multi-layered approach that will provide homes, spaces for people, nature, events and activities, and will stretch from The Glade local centre through the future 'Town Centre' Hub.

Early designs were shared with Alconbury Weald residents in October for feedback, with the following features highlighted:

- The gateway section from the buildings of the Enterprise Campus will have a feature reflecting the central line of the runway, which will be repeated at key points along its historic length. With a woodland setting around the gateway, Runway Park will start with a section that reflects the width and feel of Garland Park.

- Runway Park will open up into a wider green space, which will include important wetland habitats and water features, which are part of the site-wide sustainable water system; with trees and hedges also providing corridors for nature. This space will also provide flexible green space for people to enjoy, with space for formal and informal sports, and a play area.
- Where Runway Park meets with the 'Town Centre' Hub, it becomes a more urban space alongside woodland glades and hedgerows, to continue corridors for nature and people. It also marks a meeting point with the new linear park — along one of the old taxiways — that will connect with the Heritage Area and homes in Key Phase 3.
- As Runway Park runs through the middle of the Education Campus, it incorporates sports pitches to the south and the new community sports hub to the north.

Runway Park also has potential for alternative homes such as Passivhaus (net zero) as well as landscape features at key locations and productive landscapes such as allotments and orchards.

The concept is to retain parts of the runway to reflect the heritage of the site but reimagine it with wetland planting, trees and hedges providing a take-off for nature, alongside a unique place for people.

The team is continuing to evolve these plans for this important space for people, nature and the development's heritage.

We are excited to be working with Urban&Civic to bring forward a new country park at Alconbury Weald. We have lots of ideas and had lots of positive feedback during the engagement with residents in October. We're looking forward to developing plans and sharing them with residents and the wider community next year.

Rob Pearce Nene Park Trust



Working with Nene Park Trust

Nene Park, the Charitable Trust that runs a range of parks, nature areas and recreation facilities around Peterborough, will be supporting the design, delivery and long-term management of Prestley Country Park.

The Trust team brings extensive experience and will be working alongside Urban&Civic to create a truly sustainable, well designed and creative space in collaboration with partners, stakeholders, residents and the wider community — in the short term and through the long term stewardship of the Park.

www.nenepark.org.uk

Prestley Country Park

Prestley Country Park, at the southeast corner of the development, stretches to the edge of Huntingdon on the A141. It will provide 65 hectares of parkland, a bit smaller than Hinchingsbrooke Park (72 hectares).

There are a number of inherited features that will shape the future plans of this park as well as lots of ideas gathered through consultations.

The Park is named after the historic wood that lies at its heart. Within Prestley Wood is a Scheduled Ancient Monument that marks the site of a 13th Century manor house of some significance; it had a double moat

around it to mark the importance of the family who lived there. Now the wood provides the opportunity to create an enchanting open space where the house once stood, surrounded by historic woods, including examples of the famous Huntingdonshire Elms, which were once dominant across the local area.

Following the review of feedback from residents, further consultation is planned with the wider community in 2024. The designs will then be finalised and delivered in phases over the next few years, starting in the northern half.



Grange Farm archaeology

As Alconbury Weald went through planning, some key aspects of heritage were identified and as each phase comes forward further work is done to look at the history underneath our feet.



While the military history often dominates discussions around the former airfield, the development provides a unique opportunity to find out more about the earlier history of the site: this is nowhere more pertinent than Grange Farm, which is home to a Scheduled Ancient Monument at Prestley Wood, a shrunken medieval village and historic ridge and furrow, and ancient housing platforms just north of Great Stukeley.

Having identified key areas to focus on from previous geophysical examination, historic research and trial trenches dug in 2012, 2018 and 2020, Oxford Archaeology has been carrying out further excavations to discover more about the agricultural and social history of this area of the development through the centuries.

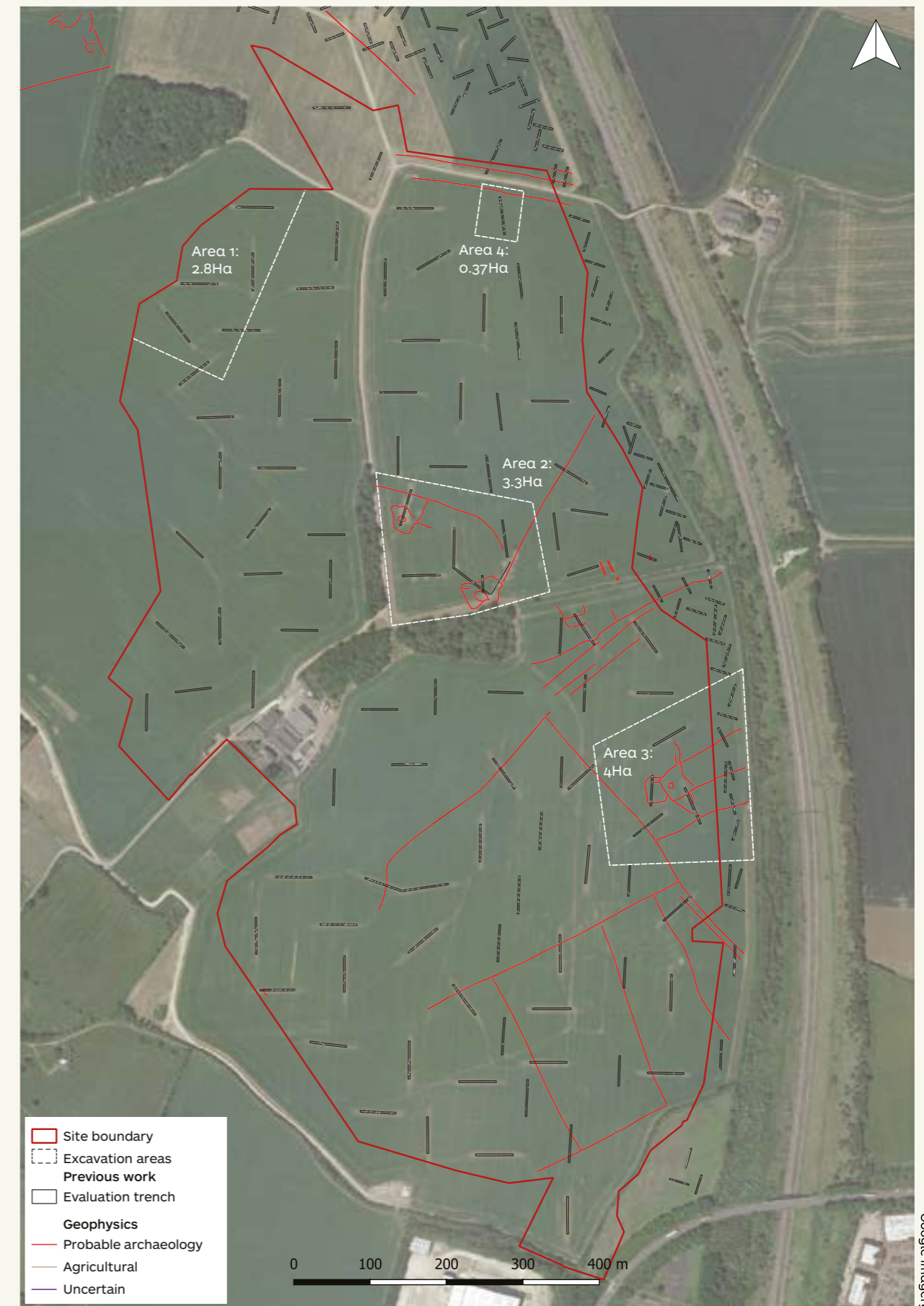
In late 2022/early 2023, archaeologists excavated Area 3 of Grange Farm and discovered a small Middle Iron Age enclosure complex, two roundhouses and a possible oven dating to the Middle Iron Age.

Evidence of more recent activity on the site was also shown by several post-medieval field boundaries, situated in the southern part of the excavation area. Artefacts discovered included small collections of Middle Iron Age and Roman pottery.

Andrew Greef, Senior Project Manager for Oxford Archaeology, said "The team has returned to Grange Farm to investigate Areas 1, 2 and 4, which are targeted on a number of additional Iron Age enclosures revealed by the geophysics and trial trenches. We will be exploring the nature of the Iron Age landscape and how it was subsequently used into the Romano-British period."

The works are expected to take approximately six months and be completed in the spring. Results of these and the earlier archaeological investigations at Grange Farm will be shared with residents and local communities at heritage events including next year's Heritage Open Day.

Grange Farm, Alconbury Weald Excavation Plan





Meet the

housebuilders

Alconbury Weald has a fantastic range of stylish 1-2 bedroom apartments and 2-5 bedroom houses being delivered by six quality housebuilders, with a range of incentives available to help everyone — from first time buyers to growing families and downsizers — to take the next step towards moving into their dream home.

In the Autumn, Alconbury Weald hosted its first Open Show Homes Weekend, with prospective buyers enjoying a day out to explore the different show homes, soak up the atmosphere in one of the development's many parks and chat to potential neighbours.

The next Open Show Homes Weekend will be on 10/11 February 2024. In the meantime, the housebuilders' show homes are available to view throughout the week.

There are lots of ways to live at Alconbury Weald and November saw the launch of the development's first homes built specifically for those wanting to rent their home.



New homes to rent

The Hawkings is a collection of 49 homes 2, 3 and 4 bedroom houses, along with five 2 bedroom apartments at Alconbury Weald. The properties are stylishly designed and meticulously appointed with state-of-the-art finishes and sustainable products throughout. Ready for you to move in and apply your personal touches to make it your home.

Each home has the following features:

- Smart home tech
- Solar PV panels
- EV charging point enabled.
- Pet friendly
- Resident's App

They provide the perfect blend of modern, stylish living, with considerations for energy efficiency and green open spaces. The Hawkings is located a few minutes' walk from the Co-op, café/bistro in the Watch Office and the cricket pitch.

The homes are professionally managed by Allsop Letting and Management. For any details, please visit the website at thehawkings.co.uk, call 0300 1246773 or email info@thehawkings.co.uk

Other ways you can live at Alconbury Weald:

Rent to buy with Rentplus

Rentplus has affordable rent to buy apartments — 1 and 2-bed flats and coach houses — to give people living in or working in the area the chance to get on the housing ladder without the need for an upfront deposit. Tenants rent their home for five to 20 years at an affordable rate, whilst using that time to save towards their future mortgage deposit and build a good credit rating. At the end of the agreed term, they can purchase their home and Rentplus will gift them 10% of the purchase price to add to their savings.

For more information, email applications@rentplushomes.co.uk

Affordable housing

Affordable housing at Alconbury Weald is being delivered by Cross Keys (affordable rent and shared ownership) and Longhurst Group (affordable rent for key workers).

Find out more at www.crosskeys.co.uk and www.longhurst-group.org.uk



Campbell Buchanan George
01480 220535
Senliz Road, Alconbury Weald
Huntingdon PE28 4LY
Open Thurs–Mon 10am–5pm.



David Wilson Homes
0333 355 8485
Senliz Road, Alconbury Weald
Huntingdon PE28 4LY
Launching January 2024



Hopkins Homes
01480 435108
Geldart Way, Alconbury Weald
Huntingdon PE28 4LZ
Open Thurs–Mon 10am–5pm.
Closed on Friday at 4.30pm



Redrow
01480 710086
Senliz Road, Alconbury Weald
Huntingdon PE28 4LY
Open Fri–Weds 10am–5.30pm
and Thurs midday–5.30pm



Barratt Homes
Launching Late 2024/early 2025



Morris Homes
07484 040412
142–146 Senliz Road, Alconbury Weald, Huntingdon PE28 4FR
Open Thurs–Mon 10.30am–5.30pm



The Hawkings
0300 1246773
info@thehawkings.co.uk



To find out more about the wider range of homes and ways to live at Alconbury Weald, visit www.alconbury-weald.co.uk/living/living.

Education lies at the heart of Alconbury Weald, with schools designed to provide for every stage of learning, all in state-of-the-art buildings inspired by Alconbury Weald’s rich heritage and community ethos.

Jemima House Nursery

Based in Ermine Street Church Academy, Jemima House Day Nursery offers flexible childcare (from birth to five years old) in a well-equipped, safe and stimulating environment that provides a wealth of learning opportunities.

Tracey James, Nursery Manager, let us know what the children have been up to since our last edition:

We love to be part of community events and the children had a fantastic time at the Scarecrow Festival again this year. They also had lots of fun planting flowers as part of the recent Magpas Air Ambulance community tree planting event; a highlight for the children was seeing a car with flashing lights taking a doctor to an emergency!

This year the children have been looking at traditional tales and *Three Little Pigs* won the popular vote and there has been much huffing and puffing around the playground.

Lots of the children have had the opportunity to take advantage of the bus stopping outside the nursery. We took the younger children to visit the community library and the older children went to

pick up the straw for the scarecrows. It was a short enough trip to be exciting but not boring and the bus driver even sang *The Wheels on the Bus* with us!

We have continued to use the mobile library each month and our gardening skills are improving; this year we have grown runner beans, potatoes and carrots that the children have enjoyed eating as part of our healthy lunches.

September was Childhood Cancer Awareness month, and we held a ‘Wear it Gold’ event raising £418 for Children’s Cancer and Leukaemia Group. This was particularly special for us as our very own superhero who had cancer as a baby wore his gold cloak with pride on our fundraising day.

There’s also lots to look forward to including our annual family candle-lit songs event, which we hold outside in our garden. Older siblings help us to lead a variety of traditional and nursery Christmas songs and it’s also a great opportunity for the parents to get to know each other.

www.jemima-house.co.uk



Ermine Street Church Academy

Sponsored by the Diocese of Ely Multi Academy Trust (DEMAT), in partnership with the Methodist Family of Schools, Ermine Street Church Academy (ESCA) is a combination of one and two-form entry primary school that continues to grow; with nursery provision by Jemima House Day Nursery and wrap around care provision by Premier Education at The Hangar Club.

As Alconbury Weald’s first primary school started its new school year with just over 280 pupils, we caught up with Headteacher Ayellet McDonnell who provided some highlights of what the children have been doing during the Autumn term and in the run up to Christmas.

The school is continuing to grow, and it’s been lovely to welcome our new starters and catch up with our returning students at the start of the new school year. The children have settled well and are thriving with a range of weekly assemblies, interesting lessons — Key Stage 2 have just started Latin — and lots to look forward to in the run up to Christmas.

Budding scientists in each class have been having a great time: with *Lightning* learners investigating bugs and their habitats; *Thunderbolts* experimenting with different items to see if they float or sink; *Tornado, Dakota* and *Canberra* learning about germs and vaccines; while *Albatross, Blenheim, Sikorsky, Phantom* and *Hercules* have been finding out about the human body, from bones to digestion and the circulatory system.

We are working with Modeshift STARS from Cambridge County Council to promote cycling, walking and other forms of sustainable and active travel to and from school. During a recent visit, members of Modeshift STARS taught the children to cross the roads safely and the importance of wearing a helmet when cycling or using a scooter.

The children have been learning about Remembrance Day with a special assembly given by Rev’d Rob. They have also been making poppy decorations and bringing in donations for poppies and related accessories. The wrist snappers have proved particularly popular and we’ve had to restock, so are expecting this year’s fundraising to be the best yet! The children also

wore odd socks to school on 13 November to mark the start of Anti Bullying Week and we’ve been supporting Children in Need again this year.

The run up to Christmas is always an exciting time for the children, and we have some special activities that they are looking forward to, including Christingle Evening, Reception nativity play and carols around the tree on the school plaza. Some of the children in our choir were also selected to sing in a special event at Ely Cathedral on 4 December. Over 800 children from across forty of the DEMAT Trust schools attended. The children were a credit to the school and thoroughly enjoyed taking part in the event.

We are also pleased to announce that ESCA is now in the Tesco Huntingdon blue token voting station, which will help us enhance our outdoor provision in Early Years. Please grab a token and help support the school if you shop in Tesco. Voting has started and will be open until 14 January 2024.

www.erminestreet.demat.org.uk



Education Campus

The Education Campus at Alconbury Weald, which is coming forward as part of Key Phase 3 of the development, will deliver a Special Education Needs (SEN) school and a new secondary school.

Prestley Wood Academy

Work is progressing well on Alconbury Weald's Special Education Needs (SEN) school, which will include 70 pupils in the first year, rising slowly to 150 pupils over four years. The school will cater for learners from 3–19 years old.

Prestley Wood Academy will be run by the Horizons Education Trust and will build on the success of its Spring Common Academy in Huntingdon, providing a welcoming environment where pupils can flourish both academically and in their personal development. Learners will be guided on a clearly defined and personalised journey to gain the knowledge, skills and confidence they need to flourish as valued members of their community once they leave school.

This state-of-the-art specialist school has been thoughtfully designed to provide equitable and inclusive access for all learners with severe/profound and multiple disabilities (SLD/PMLD). Its specialist areas enable delivery of a broad, balanced and progressive curriculum that is designed to be responsive to individual needs.

In September, Horizons Education Trust was joined by partners for the topping out ceremony, which included a plaque unveiling and tree planting ceremony, to celebrate this important milestone in the provision of much needed SEN places in Cambridgeshire.

Caroline Place, Headteacher Designate for Prestley Wood Academy, said: "I recently toured the site and was impressed by the hydro-pool, sensory rooms and outdoor spaces that will become an interactive woodland trail around the building.

"While there's still much work ahead for our September 2024 opening, we are so excited to provide a specialist environment for our future cohort. To be able to do so in such a warm, welcoming and vibrant community as Alconbury Weald is a dream come true!"

To find out more, visit www.horizons.org.uk



The new school building is progressing at pace, and I am extremely pleased to say our builders, designers and a plethora of extremely talented people are ensuring it is making timely progress.

Caroline Place Headteacher Designate for Prestley Wood Academy



Alconbury Weald Church Academy

The timing of Alconbury Weald's secondary school is still being finalised between the County Council, The Diocese of Ely Multi Academy Trust who will run the school, and the Department for Education. We hope to provide an update in the next edition to set out the likely programme for the school's delivery.

Hedgehog focus

At Alconbury Weald, all inhabitants are important whether they live in a house, burrow, nest or pond. That's why ecology and water management are an integral part of our design strategy.

As well as all the ecological enhancements and habitats we are creating around Alconbury Weald, back gardens provide a rich mosaic of environments that can help support local wildlife. This includes the humble hedgehog.

In May 2023, Hartford Hedgehog Rescue relocated to Alconbury Weald and set up a new hedgehog hospital to care for these fascinating creatures when they are poorly or injured, giving them a chance to recuperate so they are fit and healthy when they are returned to the wild.

We asked founder, Suzanne Tibbetts, to tell us a bit about how she got started, the rescue centre now and how residents and the local community can help.



Getting started

I had several young hedgehogs in my garden in 2016 who were too small to survive hibernation and I found a rescue to take them in.

After helping this rescue for a couple of winters it became apparent that there were not enough rescues in the area, so I decided to put myself on a one day course to learn the basics and then got stuck in. I had a mentor for the first 18 months as it turns out they are very complex creatures with many things that can and do go wrong.

When I first started, I housed them in my spare room with the intention of six being my maximum. When I found myself with 17 poorly hedgehogs, we had a purpose-built extension put on the side of our house. At that point I had to reassess my lifestyle as I was working full time for the fire service and putting in 30+ hours a week with the rescue. I decided to go part time with my paid job. This meant I could no longer keep funding everything myself, which is when I decided to set up the Facebook page to raise awareness and help with fundraising. This is when everything changed.



Did you know...

Hedgehogs have over 5,000 spikes

Babies are called *hoglets*

A group of hedgehogs is called an *array* — although they are solitary creatures and it is rare to find them grouped together

Hedgehogs are lactose intolerant

There are 15 different species of hedgehog in the world. The European hedgehog is the only species native to the UK

Hartford Hedgehog Rescue

We are now a team of 12, including fosterers who look after young hedgehogs needing weight gain after treatment, volunteers who help out in the hospital plus a lady in the team who runs her own rescue from home.

We have a great working relationship with Cromwell Vets in Huntingdon who we use for help with treatment that we are unable to provide such as x-rays and sedation. We also have a huge amount of support from the public, which comes in the form of donations, help with collecting poorly hedgehogs when no transport is available and fundraising on our behalf.

It's only because of the support of our volunteers, Cromwells and the public that we can help so many hedgehogs get fit and healthy before returning them back into the wild.

What you can do to help

Hedgehogs spotted out during the day usually need help. They are suffering from dehydration, internal parasites, wounds and broken limbs among other things. If left alone this often leads to flies laying eggs on them resulting in maggots and a very nasty end for the hedgehog.

If you see a hedgehog out during the day, put them in a high-sided box with a towel and ring your local rescue for advice immediately. The only exception to this is nesting or feeding mothers who sometimes come out during the day to eat or gather nesting materials. If they are walking with purpose and not hanging about, they are often best left alone. If you're unsure contact your local rescue.

During the colder months hedgehogs like to hibernate. They will wake up during milder spells for a snack so do continue to put food out for them. If you spot a hedgehog out during the day, they are nearly always unwell. Pick up using gloves, bring indoors and place in a high sided box with a towel and contact a rescue immediately for advice. Hartford Hedgehog Rescue contact number is 07782 398235.

Top tips

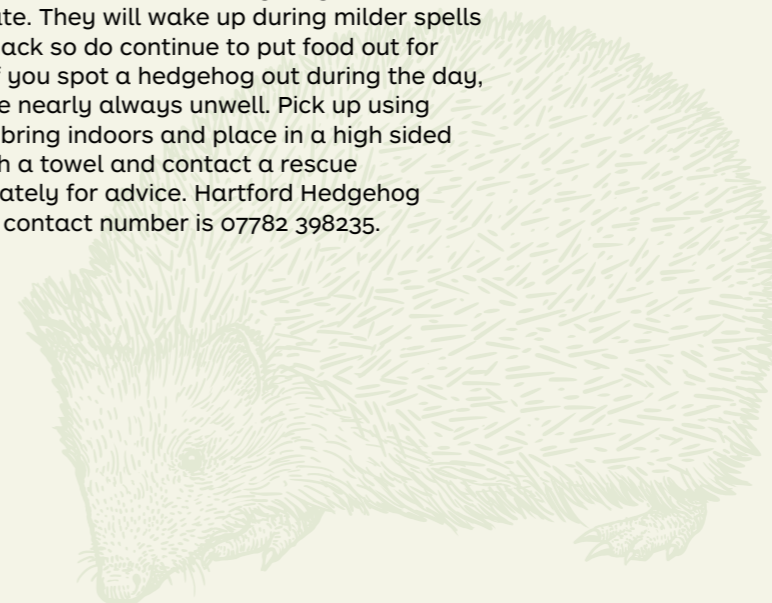
- Make a 'Hedgehog Highway' in fences and gates so hedgehogs can travel between gardens.
- Put out kitten kibble and water to support feed; nothing else as many other foods make them unwell.
- Take up football nets and other netting when not in use as hedgehogs get tangled up in them.
- Check your garden thoroughly before mowing and strimming.
- Ensure ponds have a means of escape such as a ramp or a 'beached' end.

If you would like to learn more about how to help hedgehogs, head over to our Facebook page where you can follow stories, photos and videos of the patients in the hospital and, if you would like to, you can make a donation to support our work and help with their care.

Facebook: Hartford Hedgehog Rescue — Cambridgeshire, UK



Residents moving into Alconbury Weald are given a *Welcome Pack*, which includes a nature booklet created in collaboration with the Wildlife Trusts to help create wildlife-friendly gardens that support a range of species including the humble hedgehog.



Latest news

Alconbury Weald Enterprise Campus is a dynamic place for businesses of all shapes and sizes — whether starting up, relocating or expanding — companies can rent flexible space for research and development, production and office accommodation in one of the Incubator buildings, or design and build bespoke facilities to meet their specific requirements, supported by the design, development and project teams at Urban&Civic. The Enterprise Campus also has a range of facilities available to hire, including meeting rooms, a conference hall and opportunities for outside events on Watch Office Green.

Festival of Fresh

Based at the Enterprise Campus, the UK's biggest fresh produce business AMFRESH hosted Festival of Fresh 2023, welcoming Britain's fruit and vegetable industry and its international partners to its new state-of-the-art facility in Alconbury Weald.

Organised by leading UK fruit and vegetable trade publication *Fresh Produce Journal* (FPJ), the event brought together 300 people from across the sector for a day of networking, hard-hitting interviews with FPJ's team of journalists and delicious food.

Celebrating some of the best innovations in Britain's fresh produce business, the open-air festival featured a wide array of exhibitors and provided a platform for the sector to network and discuss the pressing challenges in continuity of supply, inflation, climate change, R&D and seasonal labour recruitment, among other hot topics.

The conference programme, included contributions from leading figures in the UK's fruit and vegetable supply chains. Speakers included retailers, suppliers, importers, marketers, and breeders, as well as trade bodies, retail analysts and food redistribution companies.

Sessions were divided between two tents: the Inspiration Stage for interviews, panels, and presentations on the hot topics in the trade; and the Innovation Tent for presentations on cutting-edge new technologies shaping the future of the industry.

Managing Director of AMFRESH UK, Mark Player, was joined on stage by the supplier's UK Technical Director Sam Franklin to share the company's continued forward-thinking investments in innovation to step-change the fresh produce industry.

Meanwhile, AMFRESH Group's Global Consumer Insights and Analytics Director, Carolina Palomo, gave a wide-ranging presentation exploring ways of driving everyday fruit consumption, reaching younger consumers, effectively marketing fruit as a snack, and making fresh produce enticing and fun for consumers.



Rebecca Britton from Alconbury Weald master developer, Urban&Civic, said: "It was great to see Watch Office Green awash with colour for this amazing Festival of Fresh, busy with representatives from across the sector and around the world.

"The Green has hosted many community events over the years, and it is great to see it being used by an important member of our growing business community at Alconbury Weald, to showcase their innovative new facility here."

AMFRESH's bespoke site in Alconbury Weald Enterprise Campus is located close to its existing MM Flowers facility and is one of the most highly automated fruit-packing facilities in the UK.

The site is also home to a ground-breaking Innovation Centre, which AMFRESH intends to open up to the wider industry. The Centre includes cutting-edge laboratories and consumer tasting facilities designed to ensure the highest-quality produce with exceptional flavour and organoleptic attributes (that stimulate the senses) as well as extending produce shelf-life in a continued effort to reduce food waste.

Invest in Huntingdonshire Manufacturing Summit

In September, Alconbury Weald Enterprise Campus welcomed industry leaders, entrepreneurs and stakeholders to Huntingdonshire District Council's first Invest in Huntingdonshire Manufacturing Summit, co-sponsored by Alconbury Weald's master developer, Urban&Civic.

The sold-out event showcased advanced manufacturing excellence and innovation, and positioned Huntingdonshire as the advanced manufacturing capital of the East of England. Several featured speakers, including representatives from Oxford Innovation, Nottingham University and Innovate UK Edge, highlighted the district's commitment to fostering economic growth and development in this vital industry.

The Summit provided a platform for attendees to gain insights into the latest trends, opportunities and challenges in manufacturing. It also facilitated valuable networking and collaboration opportunities, further strengthening the manufacturing ecosystem in Huntingdonshire.

Executive Councillor for Jobs, Economy and Housing, Cllr Sam Wakeford said:

"Manufacturing is a core, foundation sector contributing to approximately 25% of the Huntingdonshire economy. HDC have prioritised and delivered support and funding over the last two years to this vibrant and diverse sector. This is just the first in a series of exciting activities happening during September."

Businesses were also invited to ask questions of a selected panel, which included senior directors from two of Huntingdonshire's success stories, Encocam and Paragraf, alongside the new CEO of the Cambridgeshire Chambers of Commerce. The panel discussion focused on "Strategies for Sustained Growth in the Manufacturing Industry" hosted by the Managing Director of local business consultancy, Shift Momentum.

Using a mix of strong traditional craft and skilled engineering, the advanced manufacturing sector in Huntingdonshire supports 13,000 jobs, 7% above the national average. Local manufacturing businesses have received more than £7million in innovation grants and have generated over 40 successful patents since 2019.

At the Summit, the Council launched the Huntingdonshire Digitisation Manufacturing Growth Programme (HDMGP); a £280,000 programme of support for the district's heritage and foundation sector of manufacturing. The HDMGP will support local SMEs in the sector to improve productivity and efficiencies by leveraging greater utilisation of digital technologies.

Huntingdonshire District Council is looking forward to building on the momentum generated by the Summit and continuing its support for the growth and development of the manufacturing sector within the district.

To find out more about opportunities to expand or relocate to Alconbury Weald Enterprise Campus, visit: www.alconbury-weald.co.uk/working



Magpas Air Ambulance opens new airbase

On 12 September Magpas Air Ambulance staff, clinicians, former patients and supporters celebrated an important milestone in the lifesaving charity's history as HRH The Princess Royal officially opened its new purpose-built airbase, headquarters and training centre at Alconbury Weald.

The building includes a dedicated state-of-the-art training centre to train the next generation of pre-hospital emergency doctors and paramedics. It is equipped for 24/7 operations with well-being and rest facilities for crew and clinicians. It also has new community and patient facilities on site — including a new dedicated space for patients and their families to visit the charity and meet with the clinicians that treated them, away from the bustle of day-to-day operations.

The new airbase is situated closer to the region's major trunk roads, which will reduce vehicle dispatch times by up to 15 minutes, and the co-location of the charity's operations and support staff — who currently work across two sites — will be more efficient: reducing charity overheads and improving environmental impact.

Daryl Brown MBE DL, the charity's Chief Executive Officer, said "It was an honour to welcome our patron HRH The Princess Royal to the site of our new base at Alconbury Weald, and show her around the building she's been so pivotal in helping us achieve.

"After she unveiled the plaque, which will become a treasured part of our building alongside the cornerstone, we were delighted to hear a few words from The Princess Royal and see her passion for the service we provide.

"It's incredibly exciting to see, what has been a plan for a very long time, finally come to fruition. Magpas Air Ambulance has treated over 70,000 patients in the past 50 years, and this new building will be fundamental to our service going forward saving thousands more lives and keeping families together for generations to come."

Magpas Air Ambulance is one of the first emergency medical charities of its kind in the UK, initially set up by two GPs in 1971. The new airbase is an important milestone in its 50-year pursuit to improve emergency care for patients across the region. However, for the charity that has experienced the highest number of activations in six years, the hard work has just begun.

Natalie Church, the charity's Director of Operations who led the new base development explains: "In addition to enhancing our service, the new building provides so many more opportunities to increase the understanding of our work and teach the community lifesaving skills such as CPR. For Magpas Air Ambulance this is a momentous day, however our hard work continues as we look to develop our services further, push to raise the £6million needed to keep us flying every year, and continue to save lives 24/7."

Find out more about the charity and donate today at www.magpas.org.uk



The new facility will accommodate all aspects of our operation including research, development, manufacturing and customer support and, importantly, provide us with the opportunity to incorporate the very latest developments in environmental and sustainability into the building.

Gary Moynehan Marshall Land Systems managing director

Marshall Land Systems relocates to the Campus

Marshall Land Systems has announced that it will be moving its land systems business, currently located on Newmarket Road in Cambridge, to a new bespoke 15,000 sqm facility at Alconbury Weald Enterprise Campus by 2025. The plans for the new facility — which will employ around 450 people when fully operational — have been submitted to Huntingdonshire District Council.

Marshall Land Systems managing director, Gary Moynehan, said the company had conducted an extensive search for potential new sites and the move would enable it to retain the vast majority of its workforce: "The site at Alconbury Weald meets all of our criteria and given its location and supporting infrastructure we believe it is the ideal home for our growing business.

"We have been hugely successful over recent years in winning new contracts both in the UK and overseas and the move will provide us with much needed extra capacity and the opportunity to reconfigure our operation to drive much greater efficiency."

In April, Marshall secured outline planning permission from Central Bedfordshire Council for the relocation of its Aerospace business, which will be moving from its current site in Cambridge by 2030. Other areas of the Marshall business will remain in Cambridge including its head office, group property, skills academy, aerostructures and Futureworx accelerator businesses.

Joe Dawson, Project Director for Urban&Civic, Alconbury Weald's master developer, said: "We are delighted they will be joining us at Alconbury Weald. Marshall Land Systems is an outstanding company whose highly skilled workforce makes an array of world leading equipment for governments all around the world. Marshall LS will be joining other renowned employers including Cambridgeshire County Council, John Adams Toys, AM Fresh, MM Flowers, Roythornes Solicitors and Ambu, all combining to make Alconbury Weald one of the most successful employment hubs in the country.



"Design work on the building is now complete and we will be working closely with the Marshall team on the delivery of their stunning new facility. We have a fantastic opportunity to create a landmark building to support their latest technologies, and with the sustainability credentials we both aspire to. We are also working closely with their team to support the relocation process for this historic move."

The Urban&Civic project team was on hand with exhibition boards and information about the location, layout and sustainability of the new facility as well as amenities and homes available at Alconbury Weald.

The planning application for Marshall Land Systems' new facility at Alconbury Weald is expected to be determined in February/March next year and, subject to planning permission being granted, the new facility could be operational in Autumn 2025.

Encouraging sustainable travel



At its heart, Alconbury Weald has been designed to encourage a healthy, sustainable lifestyle, with the right infrastructure and services being put in place for people to lead low carbon lives as the development rolls out.

Travel Survey

The annual Travel Survey is part of the monitoring process for the Travel Plan, a dynamic, living document that aims to help reduce the amount of car travel to and from Alconbury Weald. This will in turn reduce traffic impacts on local roads and the surrounding highway network, resulting in lower congestion and better air quality and road safety in the local area.

smart journeys, the Travel Plan coordinator for the development, held its annual Big Commuter Survey in October to collect data on the travel choices of Alconbury Weald residents and employees.

This year's survey asked commuters how they travel to work during a typical working week (Monday 2 October to Sunday 10 October 2023) with the data collected providing a better understanding of the barriers that prevent commuters from using more sustainable modes of transport.

Hannah Taylor, Sustainable Travel Planning Officer for smart journeys said: "The feedback we gather is invaluable, and enables our team to make informed and targeted decisions about future transport plans and incentives across Alconbury Weald."

Last year's Travel Survey informed a range of initiatives to support people to make more sustainable transport choices, including a new lift sharing scheme, free and discounted bus vouchers, and new cycling initiatives.

On the bus

The AW1 bus service — which celebrated carrying its 40,000th passenger in September — is now connecting even more people. Launched in January last year, the service — which is funded by the Alconbury Weald development — connects Alconbury Weald and the surrounding villages to Huntingdon town, and bus and rail stations. With more roads opening up within the development, the service is now reaching more residents within the new community.

The service, which uses a specially designed low carbon vehicle, is part of masterdeveloper Urban&Civic's commitment to low carbon living and to improve sustainable transport options, so people living and working at Alconbury Weald have a convenient and reliable alternative to the car, while also supporting travel connections for neighbouring villages.

To encourage residents to leave the car at home and travel by bus during the summer, Alconbury Weald residents were given free bus travel vouchers for the AW1 bus during August and September. As a result, the service saw a 22% increase in passengers!

In addition, in direct response to feedback from young residents, Urban&Civic is also subsidising AW1 tickets for young people in full or part time education (up to 21 years old) to encourage sustainable travel habits from an early age. The Young Person's bus ticket costs £15 for 10 journeys — to apply for this, please email alconburyweald@smartjourneys.co.uk

Christmas competition

21 December–3 January

Send a photo of you walking, cycling or scooting around Alconbury Weald in your best Christmas jumper for a chance to win an accessory for your bike or scooter! Email your entry to alconburyweald@smartjourneys.co.uk



Alconbury Weald resident Charlie said: "The changes that have been made to the AW1 are great. Now a young person is someone up to the age of 21, allowing more people to access cheaper travel, which I have greatly benefitted from. The fact the AW1 comes more often than the 904 also helps, as it keeps Alconbury Weald more connected to Huntingdon and helps make travel easier. The bus drivers have also been very friendly and helpful, providing the best service possible and reducing levels of anxiety some may have about using public transport."

Saver tickets are also available for adults, with adult flexi tickets costing £24 for 10 journeys.

Rebecca Britton, Regional Director of Communications, Communities and Partnerships for Alconbury Weald, said: "Urban&Civic continues to make a significant investment in sustainable transport. It's great to have extended the AW1 route through Alconbury Weald and to see residents taking up on the free bus voucher offer during the summer holidays; now they know how accessible and reliable the bus is, we hope they will choose to leave the car at home and travel by bus more regularly."



Charlie, Alconbury Weald resident

On your bike

To promote and celebrate national Cycle to Work Day on 3 August, smart journeys partnered with TAG Bikes to bring free bike servicing, free maintenance advice and a tyre changing competition to Alconbury Weald Enterprise Campus to promote safe cycling.

TAG Bikes is a charity that supports adults with learning difficulties and provides them with skills ready for employment. The team has serviced over 30 Alconbury Weald employees' bikes so far.

The sessions proved to be very popular, with great feedback received about the scheme. Rhiannon Leighton from Cambridgeshire County Council said: "I just wanted to write a glowing commendation of Robert and his team. They went above and beyond to fix my bike, despite the poor condition it was in. Not only that, but they took the time to teach me skills and have a chat. They provide an irreplaceable service to the Council and have prevented me from using my car to get into town twice a week."

The results of this year's Travel Survey will be provided in the next edition of the newsletter. To find out more about active travel and the initiatives available to support sustainable transport at Alconbury Weald, contact alconburyweald@smartjourneys.co.uk

Lift sharing

Urban&Civic has been working with smart journeys, the Sustainable Travel Planning Team hosted by Cambridgeshire County Council, and Liftshare to design and launch a platform to support Alconbury Weald and surrounding communities.

Liftshare helps find matches with other people living locally and travelling to/from similar destinations — as a driver, passenger or both.

Liftsharing helps you to:

- Save money — share the ride and split the costs. A commuter will typically save over £1,000 a year!
- Reduce CO2 emissions — be part of the bigger picture and help to reduce global CO2 emissions. Liftshare is on a mission to save 1 billion miles, and you can be part of that by simply sharing your commute with someone else going your way.
- Reduce stress — by cutting congestion and reducing the stress of traveling by sharing a car with your new best friend.

To find out how the App works, watch the liftsharing video at bit.ly/3uPu75b

Register at: www.liftshare.com/uk/community/alconburyweald



Recent events and activities

Alconbury Weald has a diverse, active community that enjoys a wide variety of events and activities throughout the year.

Scarecrow Festival

This year's Scarecrow Festival — organised by Alconbury Weald's Community Association — was the biggest and best yet, with over 40 scarecrows adorning the trail — ranging from fictional characters to the more traditional. The winners included Monsters Inc, Superworm and Spongebob Squarepants.

Plans are already underway for the next Scarecrow Festival, which promises to see even more amazing creations as more residents take up the challenge.



Wild Weald with Nene Park

For this Autumn's Wild Weald event, Alconbury Weald welcomed the Nene Park team who held two wildlife workshops to help local families create their own bug houses to support some of our smallest inhabitants through the cold months ahead.

The sessions proved popular with children having lots of fun stuffing tinned cans with sticks and bamboo canes for insects to shelter in, and wrapping yellow and black wool around the outside to create bug homes that look like giant bees. A total of 24 bug homes were created, with the children proudly showing off their creations and taking them home to take pride of place in their garden.

Vicky Chambers, Senior Education and Activities Officer for Nene Park, said: "My colleague Tom, our volunteer Barbara and I all had a fantastic time. It was great to be able to get to meet families from Alconbury Weald and the surrounding area and get to engage with them through our nature crafts, as well as showing them some of the things we do at Nene Park. They were all very friendly, enthusiastic and made some great bee bug homes. Hopefully we will get to see them on a visit to us in the future too."

For bugs in the winter, Vicky recommends leaving them some safe spaces and places for hibernation. If you have a garden, you can create your own little bug homes or even larger bug hotels. Bug homes can be as simple as tying some twigs and hollow sticks or bamboo canes together and putting them outside. You can also leave wild areas with vegetation for shelter or little log piles.

To find out more about Nene Park and the events and activities available, visit www.nenepark.org.uk



Heritage Open Day welcomes former serviceman

Over 300 people braved the hottest day of the year to find out about Alconbury Weald's fascinating past, from the Bronze Age through to its more recent military past. As well as vintage lawn games and food trucks, attendees were treated to 1940's hits performed by The Umbrella Band, tours of the Avionics Building — the unique Cold War era military bunker — and in-depth talks from experts from the Airfield Research Group (ARG).

The tours around the Avionics Building, which was designed to survive chemical and biological attack, proved popular again this year; selling out within six weeks of being posted on EventBrite. Attendees were transported to the bunker in a vintage 1940's Dews coach before being taken around the Grade II listed building, which processed intelligence data collected by the TR-1 reconnaissance aircraft during the Cold War. The building is protected by a hardened concrete shell that keeps the building very cool, which provided a welcome break from the heat of the day.

Among those taking the tour was Kevin Burt and his wife, Theresa. Kevin was an aircraft mechanic for USAF based at RAF Alconbury from 1988 to 1993. He mainly worked night shifts and was part of the team responsible for repairing returning aircraft, so they were ready for their next mission. He lived on the base until 1992, when he married Theresa and they moved to Godmanchester.

On returning to the site after 30 years, he said that the Avionics Building "felt like it has just stopped in time", although he remarked at "how quiet the building was" compared with when it was operational; with the machinery on, the airflow system operating and people working. He recalled that some days were very busy, while some were much quieter — especially on windy days when the planes could not fly — and how they played cricket or softball in one of the hangars or on the taxiway to pass the time. He's looking forward to returning with his son next year, to show him where he worked and share some of his stories from his time at RAF Alconbury.

The Co-op, which opened in The Glade local centre at Alconbury Weald in the summer also had an exhibit on the history of the Co-op, from its origins in the 1880s when the Rochdale Pioneers formed the co-operative consumer societies, through to the Co-operative Group we know today. The team also brought along a range of savoury and sweet goodies for people to enjoy during the afternoon.

Natalie Leigh-Brown, Community Development Lead for Alconbury Weald, said: "Our annual Heritage Open Day is really popular with residents and people coming from far and wide to tour the Cold War bunker and find out more about the history and heritage of this unique development.

"This year was particularly special, as it is the first time we have welcomed someone who used to work in the Avionics Building during the Cold War. It was fantastic to meet Kevin Burt and his wife and hear some stories from his time based at RAF Alconbury."

Many of the site's historic features and footprints have been designed into the future designs for Alconbury Weald, which will include a specific Cold War heritage area, to remember the unique role the base played in Cold War intelligence.

To find out more about Alconbury Weald's fascinating heritage, visit www.alconbury-weald.co.uk/about/heritage/

The Airfield Research Group (ARG) is organising a heritage walk on 10 February 2024. Meeting outside Swynford Stores at 10am, the walking tour around the residential area of Alconbury Weald will provide an insight into the development's military past. No need to book. The tour is expected to last about an hour.



Remembrance Sunday

Each year, the Alconbury Weald community joins representatives from the RAF and USAF to honour those who served at the former airfield during its military past.



The local community gather outside Ermine Street Church Academy and form a procession to the former Watch Office. This listed building, which formed a key part of RAF Alconbury's wartime effort, sits at the heart of the first community hub after its refurbishment into a café/bistro.

The Watch Office was historically used by RAF Command to overview the missions leaving the airfield — counting aircraft out and counting them in again, noting the losses of those not returning. The Green outside the Watch Office provides a focus for Second World War remembrance and will include a future memorial to both the American and Royal Air Force crews who served there. The memorial will also mark the site of a tragic accident in May 1943 when 19 young men lost their lives in an explosion whilst aircraft were being prepared for a mission.

Following a two minute silence at 11am, Rev'd Rob Paddison from Alconbury Weald Church led a short service of reflection, prayer and the laying of wreaths before concluding with both the British and American National Anthems.

Attendees were also invited to place a poppy while the wreaths were laid out on the platform by Memorial Green.

This year also saw dozens of poppies displayed on lamp posts around Alconbury Weald courtesy of The Stukeleys Parish Council.



It was particularly heart-warming to be able to involve local families and school children too, who planted pansies outside our visitor centre. We can't thank every single person who helped us enough, this is a really special group of people who will have a lasting impact on our charity and our local environment for many years to come.

Daryl Brown Magpas Air Ambulance

Magpas Air Ambulance community tree planting



Paul Murfin from Alconbury Weald master developer Urban&Civic joined Magpas Air Ambulance CEO Daryl Brown to plant trees at the community planting day

On 26–27 November residents, neighbours, schools and local businesses, as well as members of the Navy, RAF, local fire and police forces supported lifesaving charity Magpas Air Ambulance to plant over 2,000 trees, shrubs and flowers at its new airbase and headquarters in Alconbury Weald.

The two planting days took place within National Tree Week, with the new trees including oaks, birches, hornbeams and aspens, helping to offset the charity's carbon footprint, improve its contribution to the environment, and create calm and natural surroundings for the charity's patients and clinicians, as well as the local community.

Speaking of the day, Magpas Air Ambulance CEO Daryl Brown said, "It was so lovely to see the community come together to help us with this monumental task. Between us all, we managed to get every tree planted — but it was a real team effort! We had Cambridgeshire County Council take part, as well as the Highways Agency and businesses from Alconbury Weald and across Cambridgeshire."

You can also sponsor one of the newly planted trees — for one, two or three years — to help the charity to plan ahead and develop its service for the future: www.magpas.org.uk/sponsoratree

Volunteer Day

Twenty volunteers from Urban&Civic recently took part in a Volunteer Day and cleaned windows, carried out garden maintenance and painted two corridors and a room in The Beacon Centre in Little Stukeley, which is used as a community space and overflow storage for Godmanchester's foodbank.

Jude Lechmere from Godmanchester Foodbank said: "We're so grateful to the Urban&Civic team for all their hard work. It was a joy to have them and I can't believe how much they achieved in one day. We hope they'll be back again soon!"

There are currently more foodbanks than MacDonalDs in the UK and the need is greater than ever. If you would like to donate to the foodbank, please use the box in the lobby of Ermine Street Church Academy or the big collection boxes at Tesco and Sainbury's.

Jude said: "We know how challenging things are this year. People are already helping out wherever they can and all donations are much appreciated."

In particular demand are:

- Tinned goods
 - Hot meat — Irish stew, beef pie filling, meatballs, chilli con carne
 - Cold meat/fish — luncheon meat, ham, tuna
 - Vegetables — peas, carrots, sweetcorn, potatoes, tomatoes
 - Puddings — fruit, custard, rice pudding
 - Soup — tomato and meat-based soups
- Breakfast foods — Weetabix, Rice Krispies, Cornflakes, Shreddies, fruit juice and UHT milk
- General items — biscuits, jam

www.godmanchester.foodbank.org.uk

Christmas Market

Alconbury Weald held its first pop-up Christmas Market on Saturday 2 December at The Glade (opposite Co-op). There was a fantastic range of stalls selling an array of festive goodies including Christmas gifts, toys, food and drink.



Support at Christmas

We understand that Christmas can be a difficult time for some. Below is a list of not-for-profit agencies who can provide help and support.

Women's Aid
www.womensaid.org.uk
 0808 2000 247

The Men's Advice Line
www.mensadvice.org.uk
 0808 801 0327

Galop
 LGBT+ Domestic Abuse
www.galop.org.uk/domesticabuse
 0300 999 5428 or
 0800 999 5428

The Mix
 Essential support for under 25s
www.themix.org.uk
 0808 808 4994

Rape Crisis
www.rapecrisis.org.uk
 0808 802 999

Mind
 For better mental health
www.mind.org.uk
 0300 123 3393

Samaritans
www.samaritans.org
 116 123

Alcoholics Anonymous
www.alcoholics-anonymous.org.uk
 0800 917 7650

Stonewall
 Acceptance with exceptions
www.stonewall.org.uk
 0800 050 2020

Childline
www.childline.org.uk
 0800 1111

Refuge
 For women and children
 Against domestic violence
www.refuge.org.uk
 0808 2000 247

Beat
 Beating eating disorders
www.b-eat.co.uk
 Helpline: 0345 634 1414
 Youth line: 0345 634 7650

Shelter
www.shelter.org.uk
 0808 800 4444

No Panic
 Helping you break the chains
 of anxiety disorders
www.nopanic.org.uk
 0844 967 4848

Cruse
 Bereavement care
www.cruse.org.uk
 0808 808 1677

New Year Community Wellbeing Day

The opportunity to enjoy a healthy lifestyle is embedded in the design principles of Alconbury Weald and at the start of each year, residents are invited to a free community activity day to try out some of the regular sports and fitness classes taking place around the development.

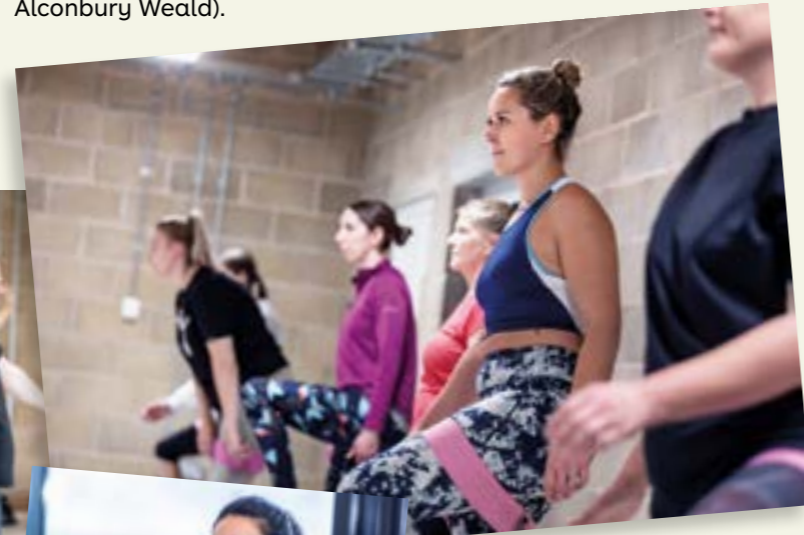
This year's wellbeing event, which focuses on body and mind, is being held on Saturday, 20 January 2024 and will include:

- **Yoga:** to improve flexibility, strength, concentration, heart health, quality of life and reduce stress levels, weight and anxiety.
- **Mind CPSL:** the team will be delivering Calm Spaces, a series of mindfulness exercises.
- **Tai Chi:** learn about Tai Chi and Chi Kung and explore opening of the body, relaxation and states of awareness.
- **Menofit:** fitness pilates followed by a talk about health, fitness and wellbeing for those peri menopause, menopause and post menopause.

- **Reflexology:** massage sessions to relieve tension through reflex points in the feet, hands and head (£10 per session).

- **Strength and balance:** aimed at older people and those requiring additional support, the class combines a mix of seated and standing exercises to target and improve mobility, balance and flexibility.

Most sessions are free and will be held in The Pavilion community centre. Spaces are limited, so please book on Eventbrite in advance (search Alconbury Weald).



Strength and balance

RightStart exercise classes are for older people and those requiring additional support to exercise. The classes are friendly and a great way to meet people with similar health and fitness concerns. All classes are designed and taught by qualified instructors, who will make sure that each activity is safe and meets your physical and medical needs.

If you are looking for a way to be more active and feel healthier in 2024 but aren't sure where to start, give a RightStart class a go! Alconbury Weald has a RightStart strength and balance exercise class from 9am-10am on Fridays in The Pavilion aimed at those who can stand for short periods of time, with a chair used for support during exercises as needed.

Booking is not essential but recommended. Book your place via the One Leisure App or call 01480 388111. Bookings can be made up to 7 days in advance.



Alconbury Weald Heritage Open Day event
in September



Rebecca Britton

Communications, Communities
& Partnerships

Urban&Civic, The Club
Alconbury Weald Enterprise Campus
Alconbury Weald, Huntingdon
Cambridgeshire PE28 4XA

E: rbritton@urbanandcivic.com
T: 01480 413141 / M: 07739 339889

www.alconbury-weald.co.uk
www.urbandcivic.com

Follow us on Twitter:


@AlconburyCampus

Follow us on Instagram:

alconburyweald

Follow us on Facebook:

www.facebook.com/alconburyweald

 Please recycle responsibly when you
have finished with this newsletter

**Alconbury
Weald**

Urban&Civic



18019900402
Printed on Carbon Captured paper