

MakeNews



Swynford Coffee opens

Work starts on new health centre

Foundations laid for new shops

Inspiring future generations

Alconbury Weald Community Association new committee



Alconbury Weald update

- 04 Development update
- 06 The Glade
- 07 Swynford Coffee
- 08 Secondary School progress
- 10 Garland Park
- 12 Phase 2
- 13 Prestley Country Park
- 14 Phase 3
- 15 Phase 4

Living

- 16 Meet the housebuilders

Education focus

- 17 Jemima House Day Nursery
- 18 Ermine Street Church Academy
- 19 Prestley Wood Academy

Jobs and Skills

- 20 Inspiring future generations

Making journeys count

- 22 Ride Away
- 23 Step Away
- Tap Away
- Share Away
- LocalGO

Ecology special

- 24 Hedgehog focus

Community

- 26 Regular clubs, groups and classes
- 27 Build lasting fitness
- 28 Other activities
- 30 Alconbury Weald Community Association
- 32 Recent events
- 34 Save the date
- 35 The Watch Office Bar & Kitchen



MakeNews

Make/News is produced by Urban&Civic – master developer of Alconbury Weald – to update residents and our neighbouring communities on progress and news from the growing community. It is distributed to Alconbury Weald, Alconbury village, Alconbury Weston, the Stukeleys and Abbots Ripton, as well as being available in housebuilder marketing suites and other public places across Alconbury Weald.



Please recycle responsibly when you have finished with this newsletter

Hello



Rebecca Britton
Regional Director, Communications, Communities and Partnerships
E rbritton@urbanandcivic.com
T 01480 413141
M 07739 339889



Paul Murfin
Communications and Partnerships Manager
E paul.murfin@urbanandcivic.com
T 01480 413141
M 07407 605119



Natalie Leigh-Brown
Senior Community Development
E natalie.leigh-brown@urbanandcivic.com
T 01480 413141
M 07823 527068

Hello and welcome to the Summer 2026 edition of the Alconbury Weald newsletter, bringing you the latest updates on the development, schools, homes, businesses, sustainability, travel and community life.

The first phase of the development is now well advanced, with more than 75% of homes delivered alongside 1.5 million sq ft of business space at the Enterprise Campus. Facilities and amenities continue to grow too, including the recent opening of Swynford Coffee. Work is also underway on the next elements of the neighbourhood, including a new health centre above the Co-op, additional shops at The Glade, the secondary school and the final section of Garland Park.

Progress is continuing across the next phases of Alconbury Weald. Infrastructure works are underway in the northern part of Phase 2 to support new homes, with Barratt Homes submitting plans for a mix of one-bedroom apartments and maisonettes, alongside two, three and four-bedroom homes to create a balanced and inclusive neighbourhood with a wide range of housing options.

Phase 3 is also moving forward, with planning consent recently granted for the first homes. Infrastructure work has started for the future Runway Park and proposals for the new Sports Hub are being finalised.

Meanwhile, the framework for Phase 4 is progressing following feedback from residents and local communities earlier this year. The development framework and design codes will help shape future housing parcels, green spaces and infrastructure, ensuring a cohesive and high-quality neighbourhood as Alconbury Weald continues to grow.

Education remains a key priority with pupils at the primary school and special educational needs school thriving, while the secondary school remains on track to open in September 2027. Earlier this year, Alconbury Weald also welcomed female students from secondary schools across Huntingdonshire for the annual Make Your Mark event, designed to inspire young women to explore careers in the built environment.

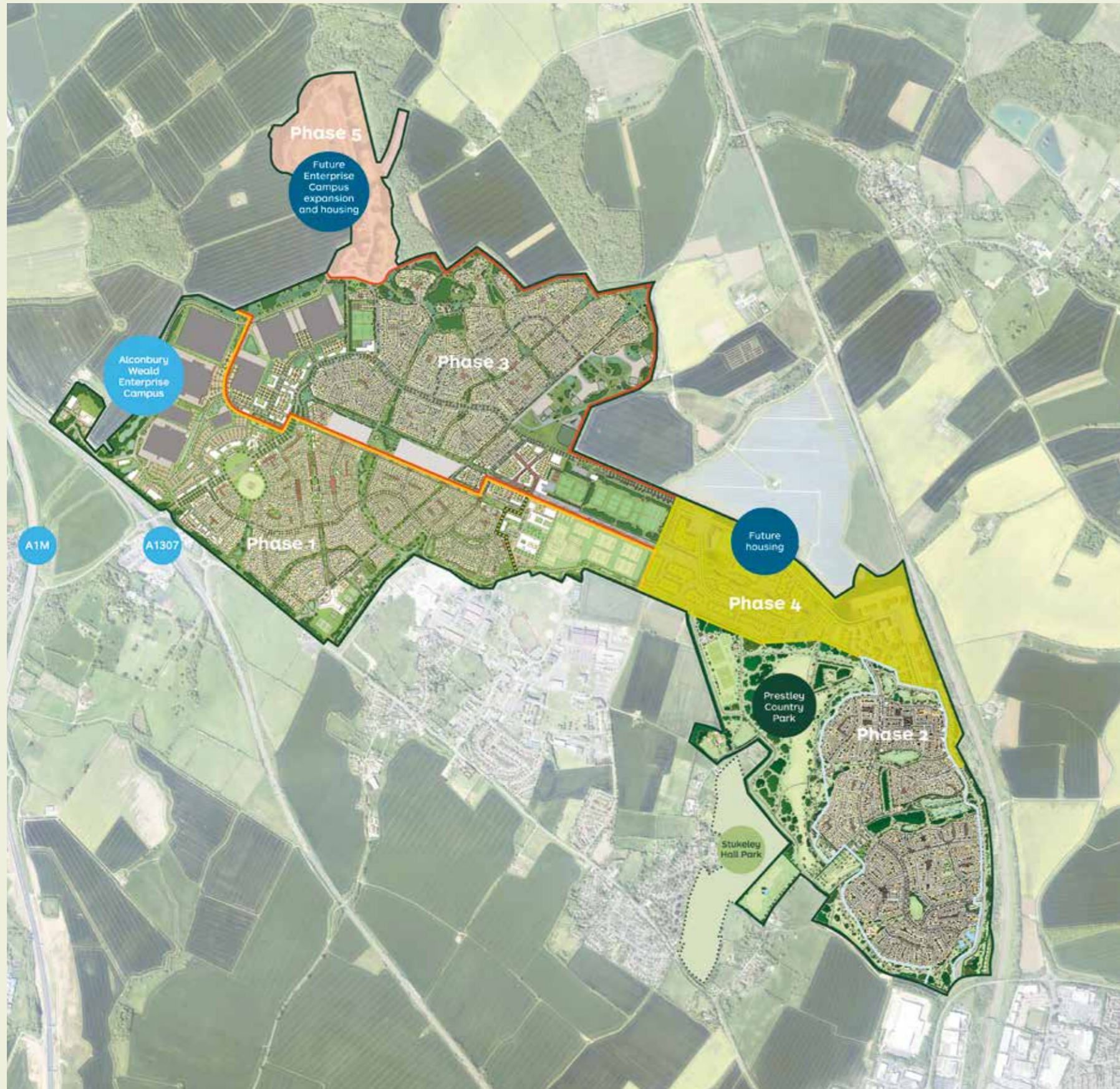
The community continues to flourish, with a wide range of regular clubs, groups and classes as well as events to bring the community together, including the Food Festival on 13 June, Hidden Gardens on 28 June, and the Heritage Open Day and Fun Day on 12 September.

Alconbury Weald Community Association and its volunteers continue to play a vital role in organising many community activities and events. If you would like to get involved, they would love to hear from you.

We hope you find this edition of Make/News informative and enjoyable. If you have any queries or ideas for future editions, please get in touch.

With best wishes,
Becca, Paul and Natalie

Development update



The new community at Alconbury Weald will be delivered in phases and will include:

- 6,500 homes.
- Three primary schools, a secondary school and special educational needs school.
- Four strategic parks and green spaces, as well as local pocket parks and green corridors.
- A 'town centre' hub with shops, health centre, sports hub, community centre and library, in addition to a range of facilities and amenities across the development.
- Transport infrastructure including prioritised bus and cycle routes, new road connections from the A141 and Ermine Street, and the potential for a future rail station and transport hub.

Phase 1

The first phase of development is well underway, with over 75% of homes already delivered alongside a nursery, primary school, special educational needs school, bar and restaurant, convenience store, community centre, cricket pitch, community library, multi-use games area (MUGA), parks, play areas, community garden and allotments. The next elements coming forward in this phase include a health centre over the Co-op, new shops in The Glade and the secondary school.

It is also home to Alconbury Weald Enterprise Campus, which has over 1.5 million sq ft of business space and will be extended in Phase 3.

Phase 2

The second phase of Alconbury Weald will include new homes, open spaces and play areas. It will be delivered in two stages, with the first homes coming forward in the north of this area alongside the 150-acre Prestley Country Park and the southern link road, which will provide direct access to the A141 and Huntingdon. As subsequent phases are completed, the road will link with The Boulevard.

The southern area will come forward when the future plans for the A141 are finalised by local transport partners, as the potential route for the realigned road goes through some of the land here.

Phase 3

In addition to new homes, this phase will include many key amenities including a 'town centre' hub with a health centre, community centre and library, shops and services, and a sports hub. It will also have large areas of parkland, which will mark the area of the old Cold War runway and connect to the future Heritage Area.

Phase 4

Phase 4 will connect Phases 2 and 3, and deliver new homes, pocket parks and play areas, and has the potential for shops and offices to come forward around a future railway station. The first step is to establish a development framework and Design Code to ensure the delivery of a cohesive and high-quality neighbourhood.

Phase 5

Currently in the very early design stage, this phase will deliver the final area of development in the north-west section of Alconbury Weald.

Phase 1

The Glade

Work is underway on the new shops and health centre in The Glade local centre.



Health Centre

The new medical centre above the Co-op – The Glade Surgery – which will include a waiting area, 10 consulting rooms and two treatment rooms – is expected to be completed in the autumn. The Glade Surgery will be run by Alconbury and Brampton Surgeries in partnership with NHS Central East Integrated Care Board.

Alconbury & Brampton Surgeries will transfer Alconbury Weald patients to the new premises, which will provide a full range of GP services including Nurse, Healthcare Assistant, Pharmacist and Physio appointments, alongside community and other health services to meet the local population's needs.

Pam Green, Director of Neighbourhood, Place and Partnerships – Cambridgeshire & Peterborough – for NHS Central East ICB, said: “Ensuring local people have good access to neighbourhood health services that deliver care closer to home is so important. That’s why it is great to see work beginning on The Glade Surgery, which will sit right at the heart of the growing Alconbury Weald Community.”

The facility will support the growing population of Alconbury Weald as well as surrounding villages, providing an additional location to the popular existing surgery in Alconbury village.



Melanie Gearing, Practice Manager with Alconbury and Brampton Surgeries, said: “The Practice is pleased to have the opportunity to deliver GP Services at a location closer to home for Alconbury Weald residents. In recent years we have grown the services we provide both for the new community and for all patients registered with the Practice. This new facility will provide the opportunity to host additional services on people’s doorsteps and respond to the needs of the growing community. As a team, we remain committed to providing a high standard of patient care that meets the needs of the growing population we serve.”

The facility is being delivered early to meet local demand and respond to the increased demands of health services locally. The services will also reflect the health and wellbeing vision designed into the development, encouraging walking, cycling and volunteering in community gardens and orchards.

Rebecca Britton from Alconbury Weald master developer Urban&Civic, said: “We are so pleased, that after lots of hard work with all the partners, we are now starting work on this important facility: a lovely space at the heart of our first phase, with some brilliant services coming forward within it. This is the first health facility, but it won’t be the last, as we continue to work with health partners to ensure further facilities and services come forward in the future central hub of Alconbury Weald, in our next phase.”

New shops

Work has started on the construction of the shops, which will be located in a single storey building that has been designed with the flexibility to combine units depending on the requirement of future tenants. The shops will be suitable for a range of operators such as a café/deli, pharmacy, hairdresser/barber, estate agent or other retail uses. The shops are expected to be available to fit out in late 2026.

Swynford Coffee

A new coffee shop and community hub has opened by Swynford Park in Alconbury Weald, bringing a warm and welcoming space for residents and visitors.

Run by entrepreneurial couple Kayleigh and Jack, Swynford Coffee offers a wide selection of hot and cold drinks alongside a delicious menu featuring toasties, waffles, cakes and bakes, milkshakes, sorbet and ice creams, including dairy-free options. Four-legged friends are also catered for, with special ‘pupsicles’ available.

The newly transformed venue has cosy seating indoors and customers can enjoy a dog-friendly deck area as well as picnic benches with parasols outside, which are perfect for relaxing on sunny days. There is also an outside serving hatch if you don’t have time to soak up the atmosphere and want to grab and go.

Kayleigh from Swynford Coffee, said: “We’ve had an incredible couple of months since our Easter launch, and the support from the local community has been overwhelming. We couldn’t have asked for a better start.”

Created with the whole community in mind, Swynford Coffee also features a ‘community shelf’ where local businesses can display their products and services for a small fee, which is donated to Alconbury Weald Community Association to support local events and initiatives.



Natalie Leigh-Brown, Senior Community Development for Alconbury Weald, said: “It’s fantastic to see this venue transformed into such a warm and welcoming space for residents and visitors to enjoy, and it is particularly inspiring to see residents investing in their own community in this way.”

Whether stopping to refuel during a family outing, catching up with friends or taking a quiet moment to unwind, Swynford Coffee is the perfect place to relax and reconnect.

For news, opening hours and specials, follow on Instagram @Swynford Coffee.



It feels like the beginning of something really special, and we’re excited to continue growing with the community.

Kayleigh Swynford Coffee



Secondary School progress

Alconbury Weald's new secondary school is being delivered in line with the Council's aspirations around sustainability, energy efficiency and best practice design, and is due to open in September 2027.

Alconbury Weald Church Academy will initially deliver four forms of entry (600 places) and include a performing arts facility as well as a sports hall with outdoor courts and playing fields. The building has been designed to enable the school to expand to eight forms of entry (1,200 places) when required to accommodate future demand.

Steel signing ceremony

Earlier this year, a steel signing ceremony was held to mark an important milestone in the construction of the new school; when the building's foundations and primary superstructure were completed.

The steel signing ceremony was led by Cllr Peter McDonald, Chair of Cambridgeshire County Council, alongside representatives from Urban&Civic, who have funded the majority of the school, Morgan Sindall and Atkins Realis, who are building the school, and Diocese of Ely Multi Academy Trust (DEMAT), who will be running the school.

Other attendees that signed the steelwork included Ben Obese-Jecty MP, Cllr Ross Martin and children from Ermine Street Church Academy, who could be amongst the first attendees of Alconbury Weald Church Academy when it opens.



The signed steel beam was the final piece of the frame to be positioned on the roof, as part of the main structure of the school building.

During the ceremony Cllr Peter McDonald said: "One of the Council's key ambitions is to ensure that every child and young person in Cambridgeshire has opportunities to thrive. It's been extremely exciting today to celebrate together a key milestone in the construction of a new school that will empower young people in this growing community to be the best they can be."

"Every signatory of the steel work today, has become part of this new school's history, at the start of what I expect will be a proud and compelling legacy, providing a high-quality, aspiration-raising education to all who attend."



Secondary school progress (May 2026)



Next steps

Work has been progressing with exterior walls, roofing works, windows and doors being installed, along with the start of internal works.

The building is due to be completed by Spring 2027, leaving time to fit out the facilities and classrooms before the new school is due to open in September 2027.



To find out more or register an interest in enrolling your child in Alconbury Weald Church Academy (if they are in Year 5 or below), visit: www.demat.org.uk/alconbury-weald-church-academy---our-new-secondary-school





Garland Park



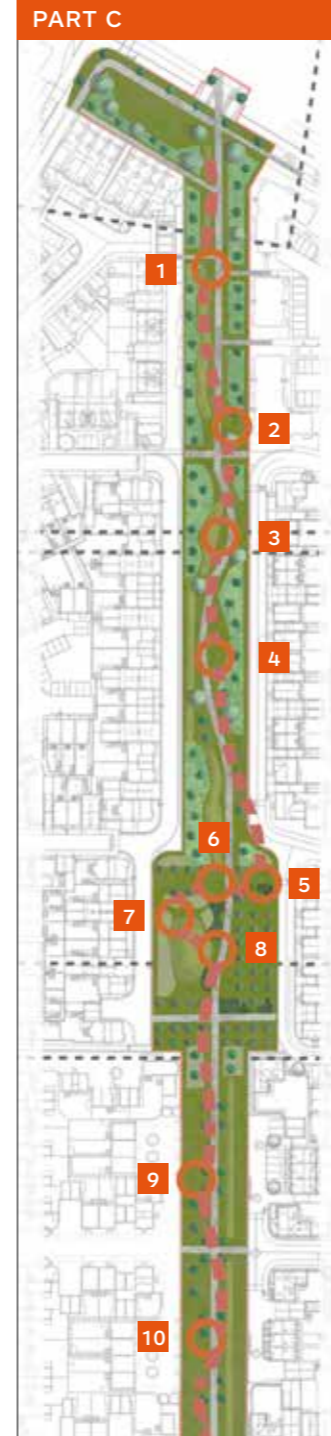
Garland Park follows the route of one of the airfield's former taxiways and, once complete, it will connect Ermine Street Church Academy with The Glade local centre.

This multi-functional green space will include paths, informal recreational spaces, play opportunities – from wild play and open spaces to equipped play areas, seating and picnic benches, community orchards, hedgerows, trees, ornamental and shrub planting, wildflowers, and other ecological features.

Part C: community orchard, new play areas, tree planting, hedgerows, ornamental and shrub planting, wildflowers, seating and recreational space (in delivery).

Part B: landscaped spaces for relaxing and play within a community orchard (completed autumn 2022).

Part A: play equipment and table tennis tables in a green, landscaped setting (completed spring/summer 2021).



Ready, set, play!

Inspired by the site's heritage as a former airfield, the different play zones have been designed to encourage exploration, communication, imagination and physical activity.

Feedback received from over 200 respondents during the consultation in December/January has been reviewed and the play elements for the 10 play zones in this section of Garland Park have been finalised:

- 1 **Tic Tac Toe:** a strategy games for two players to enjoy.
- 2 **'Runway' Wheelchair Seesaw:** an accessible platform that rocks much like a traditional seesaw, except you can also jump on it! This is a great piece of kit that offers an exciting and inclusive play experience for all abilities.
- 3 **'Hangar' seating and Little Flyer:** aligned with Make Space For Girls, this is a tucked-away space to sit and relax, whilst younger visitors can climb the steps, roll down the hill and play on the Little Flyer, in celebration of local RAF history.
- 4 **Little Speedster:** for imaginative play, allowing users to envision themselves driving, whilst the spring-supported frame adds a fun, bouncy/rocking motion to the ride.
- 5 **Toddlers' Table and Stools:** providing space for peaceful and contemplative play alone or in small groups.
- 6 **Small Triple Swing and Step Bench:** opposite a small triple swing, the step bench has seats of various heights with handles to provide a comfortable seat for users with a range of physical abilities.
- 7 **Jumping Discs:** a robust alternative to outdoor trampolines, grouped in a trio to hop along the trail.
- 8 **Climbing Pyramid:** space to climb and hang out with friends.
- 9 **Small Wheelchair Carousel 'Target' and Jet Plane:** fun, imagination-play pieces to inspire the next generation of pilots.
- 10 **Rocker 'Antenna' and Hut Combination 'Control Tower':** RAF theme play station complete with wobbling platform, ramp, platform and slide.



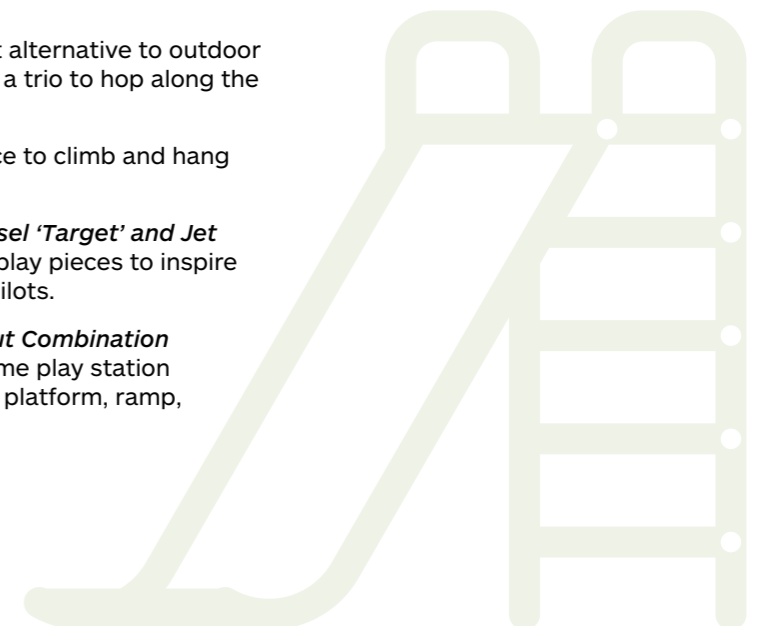
Little Speedster



Wheelchair Carousel 'Target'

Next steps

Work is due to begin on the final section of the park in summer 2026, with the full length of Garland Park open in spring 2027.



Phase 2

Laying the groundwork

Over the next few months, the Urban&Civic team will be busy creating an extensive sustainable drainage system that will support climate resilience and water management for the new homes and the wider area.

This will include digging out over 60,000 cubic metres of earth to create new ponds, which will also provide important new habitats for nature, and places for people to enjoy.

During this time, the team will also be putting in place the roads, footpaths and cycle connections that run around and between the different homes coming forward and connect into the wider development.

Work will start in June and is scheduled to take around nine months for the infrastructure, followed by three months for landscaping to be planted.

This key infrastructure will pave the way for housebuilders to start onsite, creating the setting for new homes to nestle into the landscape, and connecting up the different areas of the development.

Plans for new homes

Barratt Homes has submitted plans for the first new homes and pocket parks on the northern part of Phase 2, next to the future country park.

The 310 new homes – 20% of which will be affordable housing – will provide a mix of one-bedroom apartments and maisonettes, as well as two, three and four-bedroom terraced, semi-detached and detached houses to support a balanced and inclusive neighbourhood.

The proposals incorporate a combination of low-carbon and energy-efficient technologies, including high-efficiency heating systems, low-energy lighting and modern ventilation systems designed to ensure internal comfort while minimising energy demand. Opportunities to integrate renewable and low-carbon technologies have also been embedded within the build specification. All plots will also be fitted with an EV charging point, and a secure, lockable shed will be provided in gardens for cycle storage to support the active travel principles of the development.

The homes also have a safe, attractive and user-friendly layout, with homes arranged to front onto public footpaths and green corridors, and to connect to the country park.

Mike Jenner, Development Manager for Urban&Civic, master developer for Alconbury Weald, said: “This is a significant milestone for Phase 2 of Alconbury Weald, which will be delivered alongside the new Prestley Country Park. The team is already onsite preparing for the installation of key infrastructure including roads, pathways and attenuation ponds, which will not only form part of the wider sustainable drainage system, but also be part of the habitats created for people and nature to enjoy.

“We’d like to remind the local community to take care in this area and follow signage to stay safe around areas of work associated with the delivery of this phase.”

Barratt Homes is working on proposals for a further 225 homes, which are due to be submitted later this year.

These homes will initially be accessed from the Southern Gateway, off the A141 near Huntingdon – which was completed last year – and the southern link road will connect it with other phases of Alconbury Weald as they are delivered.



Barratt Homes street scene CGI



Prestley Country Park

Work to establish Prestley Country Park is starting in the coming weeks, with different approaches across the 150 acre area to reflect the heritage and ecology.

A planning application is being progressed for the northern part of the park, which will include some landform to support the woodland walks, future play areas, and grassland areas. In the southern part of the site, which has some sensitive archaeology under the surface, a more natural regenerative farming approach has been developed.

Sheep grazing will help improve the soil and start to turn the former intensively farmed area into a more natural grassland setting.

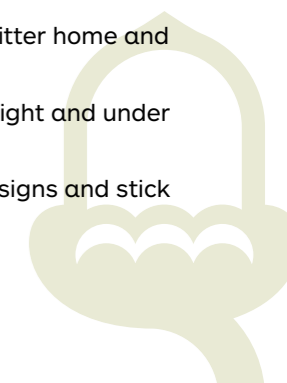
The work to transform the area into Prestley Country Park is being undertaken in partnership with Nene Park Trust. Shelley Cant is project managing the delivery of the park, working with the Urban&Civic and Nene teams, as well as local stakeholders and community groups. The areas that will be grazed initially are shown in yellow on the map above. Fencing and signage will be going up in the next few weeks, ahead of the first livestock being in place later this summer.

Shelley said: “As we progress with these plans, we will be looking for local volunteers to help out by keeping an eye on the animals, as well as future tree planting, habitat management and ecological surveys. With the livestock going on, it’s also going to be really important to respect the

Countryside Code so that everyone can enjoy this amazing space.”

The Countryside Code includes:

- Respect everyone: Be considerate of other people, leave gates as you find them and do not block access.
- Protect the environment: Take litter home and do not light fires.
- Control animals: Keep dogs in sight and under control. Bag and bin all waste.
- Enjoy responsibly: Follow local signs and stick to marked paths.



How to get involved

If you would like to find out more and get involved, please register your interest by emailing natalie.leigh-brown@urbanandcivic.com

Phase 3

Work is progressing on this phase of Alconbury Weald, with planning consent recently granted for the first 272 homes, infrastructure underway for the future Runway Park and proposals being finalised for the new Sports Hub.

New homes

Taylor Wimpey has been granted planning consent for 272 new homes, which will be delivered close to the future Runway Park and the next phase of the Enterprise Campus.

The new homes will range from one to five bedrooms, comprising apartments, bungalows, houses and townhouses. The plans also include designated affordable housing through a combination of affordable rent and shared ownership.

Taylor Wimpey is committed to long term reductions in carbon emissions through the use of materials and reducing energy

consumption. This includes integrating measures to reduce water consumption into each home, so its requirement to achieve 110 litres of water per person per day is met. Each property will also include air source heat pumps, which extract heat from the outside air. This is a low-carbon alternative with a reduced reliance on electricity.

Work is due to start onsite later this year, with the first homes available early 2027.



Runway Park

Runway Park

Following the route of the former airfield's runway, the park will incorporate a mosaic of habitats for nature alongside parks and gardens. With quiet spaces for reflection and active spaces to support a healthy lifestyle, Runway Park will provide a wealth of opportunities for people living, working and visiting Alconbury Weald to enjoy quality time outside.

Infrastructure work is already underway. Subject to planning consent, work will then progress on the detailed design for the landscaping, which will include green spaces, water features, play areas, walking and cycling routes, and extensive planting.

Sports Hub

Health and wellbeing are embedded into the design for Alconbury Weald, with a range of sports and activities already available for all ages and abilities to enjoy. As the development grows, more facilities are being added, and the team is finalising proposals for the Sports Hub coming forward in Phase 3 following last year's consultation and further engagement with key stakeholders and partners.

Plans for the Sports Hub, which will include outdoor sports pitches and a Clubhouse with community space, changing rooms and a bar/café, are expected to be submitted this summer.

Phase 4

Earlier this year, the team invited residents and local communities to share their thoughts on the emerging framework plans for Phase 4. In addition to support for the initial plans, a wide range of comments and suggestions were received, which are summarised below.

This phase will include:

- Over 1,000 homes from 1 and 2 bedroom apartments to 3 and 4 bedroom family homes, incorporating a mix of affordable options such as shared ownership, social rent and rent to buy.
- Pocket parks, play spaces and green connections that extend and link green corridors for both people and wildlife, continuing the approach to nature in the rest of Alconbury Weald.
- The final section of Runway Park: marking the historic landing point for aircraft returning to RAF Alconbury, Touchdown Park will sit at the heart of this green space with a platform extending over the water that could be used for community events.
- The continuation of footpaths and cycleways, and completion of the remaining section of the main spine road running through Alconbury Weald, enabling travel through the development from The Boulevard to the Southern Gateway (A141).

Its proximity to the 'town centre' hub of the development, means the shops, secondary school, health and community centre and other amenities will also be in easy reach.

The potential for a railway station has always been part of the vision for Alconbury Weald and could play a transformative role to unlock economic growth. If approved, the new station complex is likely to include a concourse with shops and offices at ground level and apartments above.

Urban&Civic has allocated space for this within the Phase 4 framework and transport and planning authorities are continuing to work with Network Rail around the opportunities to deliver a railway station and its associated infrastructure at Alconbury Weald, on the East Coast Mainline.

Mike Jenner, Development Manager from Urban&Civic, said: "Phase 4 has an important role to play in the delivery of Alconbury Weald, connecting green spaces and key infrastructure and providing a diverse mix of future homes. We welcome the feedback, which will help evolve these and future designs as Alconbury Weald progresses. It is also great to hear the desire to continue and expand the walking, cycling and public transport links that remain a key part of the vision for this place, alongside the green spaces and play areas."

Consultation feedback

Comments and suggestions on the plans shared in community events and online, included:

- Homes: look at density and continue to provide green spaces/mature landscaping buffers within the housing parcels, add bungalows and accessible homes to the housing mix and potential for self-build zone.
- Parks/play spaces: play areas with a gated fence, planting fruit trees, more swings for all ages (and for wheelchairs), seating for adults supervising children (some with a canopy), dedicated 'teens' area and open space to kick a ball around/free play.
- Footpaths/cycleways: more footpaths and cycleways, as well as more drop curbs and tactile tiles to improve accessibility.
- Transport: buses, traffic calming and pedestrian crossings.
- Railway station: there was widespread support for a railway station with ideas about shops, facilities and amenities associated with the concourse, and the need to manage parking so it doesn't overflow onto residential streets.

Respondents also shared thoughts and ideas for other phases of Alconbury Weald, which are also being reviewed by the project team.

Next steps

The team is using feedback to inform the framework plan and design code, which is due to be submitted to Huntingdonshire District Council later this year/early next year.

The development framework and design codes will set the parameters for the detailed designs that will come forward for individual housing parcels, green spaces and infrastructure, ensuring a cohesive and high-quality neighbourhood.



Meet the housebuilders

There are a wide variety of apartments and houses coming forward from a range of housebuilders at Alconbury Weald.



Housebuilder showhomes

1

Campbell Buchanan George
01480 220535
Senliz Road, Alconbury Weald
Huntingdon PE28 4LY
Opening Jan 2027

2

Barratt Homes
07795 919929
Leukenor Way, Alconbury Weald
Huntingdon PE28 4ZR
Open Monday 12:30pm–5:30pm
and Thursday–Sunday
10am–5:30pm

3

David Wilson Homes
0333 355 8485
Senliz Road, Alconbury Weald
Huntingdon PE28 4LY
Open Thurs–Sun 10am–5.30pm,
Mon 12.30–5.30pm

4

Redrow
01480 710086
Senliz Road, Alconbury Weald
Huntingdon PE28 4LY
Open Fri–Weds 10am–5.30pm
and Thurs midday–5.30pm

5

Morris Homes
07484 040412
142–146 Senliz Road, Alconbury
Weald, Huntingdon PE28 4FR
Open Thurs–Mon 10.30am–
5.30pm

H

The Hawkings
0300 1246773
info@thehawkings.co.uk



To find out more about the wide range of homes and ways to live at Alconbury Weald, visit www.alconbury-weald.co.uk/living

Education is a priority for Alconbury Weald, with schools designed to provide for each stage of learning, all in state-of-the-art buildings inspired by Alconbury Weald's rich heritage and community ethos.

Jemima House Day Nursery



Jemima House Day Nursery, based within Ermine Street Church Academy, gives children from birth to five years old a nurturing environment with a focus on health, happiness and wellbeing to help each child reach their full potential.

The children have had a fun-filled few months with celebrations, new experiences and plenty of hands-on learning opportunities.

The nursery recently celebrated World Book Day, with both children and staff dressing as their favourite book characters including Dr Zoo, Rapunzel, Winnie the Pooh, Elsa from Frozen and the witch from Room on the Broom. It was a joyful occasion, inspiring creativity and encouraging lots of discussion about well-loved stories and characters.

For Comic Relief, the children had another chance to dress up and took part in themed activities to help raise awareness of the charity's work and enjoyed a game or two to support their fundraising efforts in a fun and engaging way.

They are also learning about different life cycles and witnessing the early stages of life. Having watched ducklings hatching in the spring, the children are looking forward to seeing caterpillars enter chrysalides and emerge as butterflies. The children are fascinated and parents are being

kept involved through regular photo and video updates shared via the nursery's app.

The older children have also been enjoying regular sessions in the school cookery room. They have been preparing items from the nursery menu to help them understand how food is made whilst learning lots of new skills and expanding their vocabulary. These sessions have been a fantastic way to build confidence and broaden their culinary interest.

Work continues to enhance the outside area, with a new planting space being developed. Herbs will soon be grown for the children to use in their mud kitchen play, supporting sensory exploration, creativity, and an early understanding of food and nature.

As September approaches, the children starting Reception in the new academic year are beginning to find out which primary school they will be attending. The nursery is supporting this important transition through stories, activities, role play and visits from local teachers, helping to ensure children feel confident and ready for the next stage of their education journey.

www.jemima-house.co.uk

Ermine Street Church Academy

Part of the Diocese of Ely Multi Academy Trust (DEMAT), in partnership with the Methodist Family of Schools, Ermine Street Church Academy is Alconbury Weald's first primary school, with wrap-around care provision by Premier Education at The Hangar Club.

Over the past few months, the school has continued to thrive, with pupils embracing a wide range of learning opportunities both in and beyond the classroom. It has been a busy and rewarding period, marked by enthusiasm, curiosity and a strong sense of togetherness across all year groups.

In Reception, children have been exploring 3D shapes and learning to describe their properties using mathematical language. Shape hunts around the school have sparked excitement, with pupils spotting cubes, spheres and cones in unexpected places. In Music, they have enjoyed learning about the King's Guard, marching in time with great enthusiasm. They also had a wonderful day at Sacrewell Farm.

Year 1 have been enjoying their English work based on The Jungle Book, developing their understanding of characters, learning that Mowgli is the protagonist and Shere Khan the antagonist, and what this means as the adventures unfold. They have also been building their vocabulary and using it with increasing confidence in their writing.

Year 2 have been learning about George de Mestral and his invention of Velcro. They were fascinated to discover how a simple observation led to such an important everyday material, now used in everything from clothing to space suits.

Year 3 enjoyed a trip to West Stow Anglo-Saxon Village, where they explored reconstructed buildings and experienced life in Anglo-Saxon times; bringing their classroom learning to life. The children represented the school beautifully with impeccable behaviour, kindness towards one another and thoughtful questions.

Year 4 have begun their new class text, The Miraculous Journey of Edward Tulane, which has already captured their imagination. In maths, they have been developing confidence with decimals, while in science they are investigating how temperature affects evaporation through careful observation.

Year 5 have been working through the shape strand in maths, focusing on perimeter and area before moving on to compound measures. They have approached these challenges with determination and are looking forward to learning about volume next.

Year 6 have been exploring different worldviews and how different belief systems compare. This encouraged thoughtful discussion and helped the class develop a clearer understanding of a range of perspectives.

Children in each year group are enjoying performing for their parents and carers in a rolling programme of class assemblies. A highlight is when their families stay afterwards to enjoy tea and biscuits together, providing a lovely opportunity to connect and celebrate the pupils' achievements.

As the term continues, the school looks forward to building on this positive momentum and creating many more enriching experiences for all pupils.

www.erminestreet.demat.org.uk



Pupils enjoy outing to West Stow Anglo-Saxon Village

Prestley Wood Academy

Alconbury Weald's special educational needs and disabilities (SEND) school welcomed its first students in 2024 and, now with 100 pupils, it is at capacity for this academic year.

Headteacher Caroline Place shares the latest news from the school:

One of the things we talk about a lot at Prestley Wood Academy is what it really means to belong to a community. At its heart, being part of a place is about the small, everyday moments that remind us we're connected and that we experience daily in Alconbury Weald; people smiling as they pass, stopping for a quick hello, taking care of shared spaces, and showing interest in one another. These simple gestures say a lot about what it means to be human.

We guide each pupil on a personalised journey to build the knowledge, skills and confidence they need to flourish as valued members of their community, both now and in adult life. The friendliness of our local area makes a real difference, helping our students feel welcome and able to take part in the world around them.

Spring term gave our students plenty of chances to experience that sense of connection in action. Preparing for their upcoming residential, taking part in the Duke of Edinburgh Award scheme, and tending their plot at the community garden have all helped them grow in independence while contributing to the wider community. These activities aren't just school projects, they're opportunities for pupils to practise being part of something bigger, to work alongside others, and to see the impact of their efforts in real, everyday settings.

Being out and about with our enterprise stalls has been another highlight, giving students the chance to share what they've created and meet people from across the local area. Huge thanks to those of you who kindly spent your money at the stalls and stopped to interact with our students. It's these interactions, small but meaningful, that help our pupils feel valued and included, as well as building skills that will lead to the quality of life we all strive for.



Invitation to join Local Governing Committee

Prestley Wood Academy is inviting expressions of interest for new Local Governing Committee (LGC) members. This is a vital role in the life of the school. The LGC acts as a critical friend to the leadership team, helping to ensure we remain accountable, inclusive, and ambitious for every child.

Why join?

- Be part of shaping the future of Prestley Wood Academy.
- Represent the voice of the wider community.
- Support school improvement and student success.
- Gain valuable experience in governance and education.

The school cannot run without a strong and committed governing body. If you're passionate and want to make a meaningful impact, they'd love to hear from you.

For more information or to express your interest, please contact Jo Tregent at jtregent@prestleywood.org.uk





Inspiring future generations

More than 70 girls from secondary schools across Huntingdonshire took part in this year's Make Your Mark event at Alconbury Weald. The initiative is designed to inspire and empower young women to explore careers in construction and development.

The students gained valuable insights into the wide range of professions within the built environment and saw how these disciplines work together to create sustainable new communities like Alconbury Weald.

Year 9 students from St Ivo Academy (St Ives), St Peter's School (Huntingdon), Sawtry Secondary School and Abbey College (Ramsey) attended the inspiring design, construction and engineering taster day, which aims to challenge stereotypes and open doors to new career opportunities.

The morning started with an interactive design workshop led by Laura Bradley, Founder and Director of Bradley Murphy Design. After introducing the role of a landscape architect – and her work with the Make Space for Girls charity, which champions more inclusive public spaces – Laura invited students to contribute ideas for a new green space within the future Runway Park.



This is our fourth year attending Urban&Civic's Make Your Mark event, and honestly, this year was the best yet.

Amber Walker St Peter's School



Students were encouraged to think about what makes a space feel welcoming, safe and enjoyable, considering elements such as accessibility, materials, colour and layout. Working collaboratively with peers from other schools, they developed their ideas before presenting them to the wider group.

The workshop generated a wide range of creative concepts, including areas for sports such as basketball, football and volleyball; adventurous features like zip wires; quiet zones for studying or socialising and interactive water features. Other innovative ideas included using colour to clearly define areas for nature, play and relaxation, and exploring options for lighting triggered by movement on footpaths or running routes to create a safer environment. These ideas will help inform the design of this area within the wider park as plans progress.

In the afternoon, the students had a chance to try their hand at bricklaying, experience virtual welding and operate heavy machinery through a state-of-the-art plant operator simulator. Delivered by Constructed Pathways and the Eastern Education Group, the sessions highlighted career paths within sectors where women are traditionally underrepresented.

The activities created a real buzz of excitement, with students enthusiastically engaging in each activity and discovering new skills and interests.

The afternoon events form part of a wider commitment to broaden participation in construction and engineering, ensuring young women can see themselves represented in high skill, high demand sectors.

Amber Walker, Careers Office Manager at St Peter's School, said: "Our young ladies thoroughly enjoyed the creative design workshop, exploring what young women want and need from play spaces to feel safe and have fun. The addition of hands-on activities such as bricklaying, virtual welding and even operating a digger simulation added another dimension to the day. It really opened their eyes, sparked curiosity and you could see their confidence growing by the minute."

This event is part of a programme of initiatives designed to create opportunities for local people within the built environment sector. This includes working with Constructed Pathways and the CITB under the National Skills Academy for Construction Framework.

At its heart, Alconbury Weald has been designed to encourage a healthy, sustainable lifestyle, with the right infrastructure and services being put in place for people to lead low-carbon lives as the development rolls out.

The Urban&Civic team is working with *smart journeys*, the Sustainable Travel Planning Team hosted by Cambridgeshire County Council, to help deliver a place that puts active and sustainable travel first and encourages people to leave their car at home.

Ride Away

Alconbury Weald has been designed to encourage cycling around the development and connecting into the wider area. The main roads through Alconbury Weald (The Boulevard and Senliz Road in Phase 1) have shared footpaths/cycleways alongside them. Smaller streets, like Carnaile Road or Swynford Road, have been designed to slow traffic and have fewer cars on them, and so create roads that are safe for cycling.

To encourage residents to use active travel to get out and about, *smart journeys* has a range of incentives and initiatives, including bike hire, 1-2-1 cycle training, learn to ride sessions, bike servicing and bike maintenance training.

- **Bike servicing:** Alconbury Weald residents can book a free bike servicing and repair session on the first Sunday of each month to make sure their bike is safe and ready to ride.
- **Children's cycle training:** on Monday, 3 August children aged 4-10 years old can join a one hour cycling course to build their skills and confidence. It doesn't matter what ability your child has, the experienced cycling trainer will tailor the session to maximise their cycling ability.

smart journeys will be at Alconbury Weald Food Festival (13 June) and Heritage Open Day (12 September) with information, advice and bike servicing. You can also try using pedal power to create your own smoothie on a special bike during the Food Festival.

The bike servicing and training course are free but spaces are limited and need to be booked in advance by emailing alconburyweald@smartjourneys.co.uk

Supporting App-y cyclists

App Bikes help residents and visitors explore by bike, with user numbers rapidly exceeding expectations.

Alconbury Weald has six manual bikes and two e-bikes, which can be found outside the Co-op, and at Swynford Park and Crescent Park. In the first four months, almost 100 people have signed up and the App Bikes are in regular use.

The bikes can be used throughout the day and taken anywhere but must be returned to one of the App Bike stations. Further locations and bikes will be made available as the development grows.

App Bikes are available for anyone over 18 years old to use. Users just need to download the free App, register (with proof of age and address) up to two working days in advance of first use and get pedalling.

Urban&Civic is funding the first 30 minutes, after which it costs £1 per 30 minutes.



Find out more about travel and transport at www.alconbury-weald.co.uk/travel

Ride
Away



Step Away

Step
Away

With an extensive network of footpaths throughout Alconbury Weald, the summer is a great time to explore the parks and green spaces around the development.

Nordic walking

smart journeys has organised Nordic walking sessions from 10-11am and 11am-midday on Saturday, 4 July. Nordic walking uses poles to strengthen muscles, burn calories and improve balance and the session will be a great way to meet neighbours and explore the local area.

Spaces are limited, so please email alconburyweald@smartjourneys.co.uk to check availability and book a place.

LocalGO

Residents at Alconbury Weald can also join LocalGO to access discounts to help them get about more sustainably. This includes:

- **Cycle Solutions discount**
LocalGO members can access 8% off gift vouchers at Cycle Solutions.
- **E-bike savings**
Save £5 on monthly subscription costs with Hurrecane eBikes.
- **Halford discount**
Enjoy 7% members discount in store and online.
- **Railcards**
Save on selected Railcards and get up to 1/3 off fares.
- **Rent-a-car discount**
Save up to 10% on car and van hire.

The password for residents is alconbury@localgo.co.uk – all lowercase.

Summer special

Alconbury Weald lift sharers using the Mobilityways App in June will be entered in a draw to win rewards including a free beverage from Swynford Coffee, Co-op vouchers and a free ride with App Bikes.



Tap Away

Tap
Away

To support residents, workers at the Enterprise Campus and visitors to get about sustainably, Alconbury Weald has the AW1/AW1X and 904 bus services, which ensure passengers can catch a bus every half hour from 6.30am to 7.30pm on weekdays. The 904 runs on Saturday and the AW1/AW1X on Saturday/Sunday.

Alconbury Weald also has improved connections to Cambridge with the hourly Tiger 1 bus route providing faster and more frequent bus trips between Huntingdon and Cambridge. Catch the AW1 or 904, change at Huntingdon Bus Station and be in Cambridge in just over an hour (subject to connections).

Visit www.traveline.info and plan your next trip.

Share Away

Share
Away

Lift sharing is a great way to save money, reduce CO₂ emissions and reduce stress – as a driver, passenger or both.

If you haven't joined yet, simply follow the steps below:

1. Download the Mobilityways App
2. Open the App and 'Search for a community to join'
3. Search for 'Urban&Civic' and click to join 'Alconbury Weald Liftshare'
4. Join with your email or sign in with Apple or Facebook
5. Add in your details i.e. your journey, if you are a driver or passenger (or both)
6. Let the App do the rest and find matches!

The *smart journeys* team has been attending resident and business events to promote the closed community group for Liftshare and explain how the car sharing scheme works.

You don't have to live at Alconbury Weald to lift share. The more people that sign up, the easier it will be to find a match with others making similar journeys. If you have any queries, please email alconburyweald@smartjourneys.co.uk



Hedgehog focus

At Alconbury Weald, all inhabitants are important whether they live in a house, burrow, nest or pond. That's why ecology and water management are an integral part of our design strategy.

As well as all the ecological enhancements and habitats we are creating around Alconbury Weald, back gardens provide a rich mosaic of environments that can help support local wildlife – including hedgehogs.

As part of Hedgehog Awareness Week in May we asked Suzanne Tibbetts, Alconbury Weald resident and founder of Hartford Hedgehog Rescue, to tell us a bit about her hedgehog hospital and practical actions we can take to support their conservation.

Why did you set up Hartford Hedgehog Rescue?

I found some young juveniles in my garden in early winter and knew they were too small to survive hibernation. I contacted a local rescue and could see how inundated they were, so offered to help by having some hedgehogs in my home. The following year I decided to set up my own rescue as there were clearly more hedgehogs needing help than there were rescue spaces.

I initially took six thinking that would be my limit, and within four months found myself with 17 in my spare room. I put myself on a one-day course at Vale Wildlife in Gloucestershire and had a mentor for my first 18 months while I learned the basics. I read books, contacted other rescues and joined groups to keep learning.

Ten years on and I have a purpose-built hospital in my garden in Alconbury Weald and rescue between 150 and 200 hedgehogs a year, and have a dedicated team of volunteers that help.



What are the most common problems?

There are many reasons for hedgehogs being admitted but the most common is a heavy burden of internal parasites. They pick these up from the food they eat – slugs, snails and earthworms primarily. The biggest thing people can do to help is to regularly put out food and water in shallow dishes. All they need is kitten kibble such as Purina, or a supermarket own brand along with water. 'Hedgehog' food can be unsuitable as it's not regulated but Brambles and Spikes are both good brands.

Other issues they regularly come in with are garden injuries from strimmers and mowers, disturbed nests, dog attacks and hedgehogs trapped in netting (football nets and garden netting). Hedgehogs also drown in garden ponds. They are good swimmers but need to have a way of climbing out or they swim until exhausted and then drown.

If someone finds a sick hedgehog, what should they do?

First thing to do is to pick it up using gloves and put it in a high-sided box with a towel underneath and another to hide under. Bring indoors immediately to get away from flies and predators. Put the box in a quiet room and offer a shallow dish of water but no food.

If there is a visible injury, such as blood or dragging legs, take to your nearest wildlife friendly vet. If there is no visible injury, contact your local hedgehog rescue immediately. Time is of the essence and every hour counts.

In addition, if you spot a hedgehog out in the day this means they are in urgent need of help even if they don't look unwell. The only exception to this is a nesting or a feeding mother who will be walking with purpose and clearly on a mission. If the hedgehog is just ambling around the garden in the daytime, they are seriously unwell and need help.



For useful advice and a link to your nearest rescues, visit www.thehedgehoglady.com



Creating a wildlife-friendly garden

Residents moving into Alconbury Weald are given a Welcome Pack, which includes a section on nature created in collaboration with the Wildlife Trusts to help create wildlife friendly gardens that support a range of species including the hedgehog.



Top tips:

- The key is to think 'hedgehog' and check the area thoroughly before doing anything in the garden.
- Put a slope into garden ponds so hedgehogs can climb out.
- Check your garden before doing any garden work – they will sleep in long grass as well as piles of leaves – a hedgehog nest isn't always obvious. Sometimes they will make a nest in an empty compost bag.
- Make sure you have holes in fences and gates to create hedgehog highways (13cm x 13cm), so they can travel safely between gardens avoiding having to cross busy roads.
- Cover any large holes and drains.
- Tidy away netting at night including football nets. When they get stuck, they struggle and the netting gets tighter and tighter around them.
- If you disturb a nest, then quietly put it back and leave well alone. If you disturb a nest with babies and mum runs off, cover it back up again and monitor from a distance for a couple of hours to see if mum comes back. If in doubt, contact a rescue for advice.

Did you know...

- Hedgehogs have over 5,000 spikes
- Babies are called hoglets
- A group of hedgehogs is called an array – although they are solitary creatures and it is rare to find them grouped together
- Hedgehogs are lactose intolerant
- Hedgehogs are nocturnal and can travel over a mile at night – at a top speed of 5mph, albeit only in short bursts
- There are 17 species of hedgehog found in Europe, Africa and Asia.
- The European hedgehog is the only species native to the UK



Regular clubs, groups and classes

Alconbury Weald hosts a wide range of clubs and classes that cater for all ages and abilities. From play groups and dance classes for little ones, to youth club for young people and a range of fitness classes and social clubs for adults, there is something for everyone.

We've provided a list of all the Alconbury Weald clubs, groups and classes currently taking place to help you find the ones you might be interested in joining. www.alconbury-weald.co.uk/whats-on



Social

- **Alconbury Weald Community Association** – 7.30pm on the first Wednesday of the month on Teams or in The Club (check The Warbler for details)
- **Alconbury Weald Allotment Society** – times/locations vary
- **Board Games** – 7pm on the first Tuesday of the month in The Watch Office
- **Business Owners Group** – times/locations vary
- **Chess Club** – 5pm on Sunday in The Watch Office
- **Coffee Morning** – 11am on the second Friday of the month in The Club
- **Community Garden Club** – times/locations vary
- **Photography Club** – 7pm on the third Tuesday of the month in The Watch Office
- **Friends of ESCA** – times vary/at Ermine Street Church Academy
- **Spotlight Theatre** – 7pm on Mondays and Tuesdays in The Club
- **Tuesday Club** – 1.30pm on Tuesday in The Pavilion
- **Weald Thing: resident band** – times vary, in The Pavilion



Youngsters

- **Alconbury Weald Brownies and Guides** – 6pm and 7.30pm on Wednesday in The Pavilion
- **Alconbury Weald Youth Club** – 6pm for Yr 4–6 and 7.30pm for Yr 7–11 on the second Friday of the month in The Pavilion
- **Hot Shots inclusive tennis** – various times on Tuesday in The Pavilion
- **Kid's Yoga** – from 4pm on Monday in The Pavilion
- **Roots and Wings** – 10am on Wednesday in The Pavilion
- **Stay and Play** – 10am on Friday in The Club

Sports and Fitness

- **Alconbury Flyers: running club** – times/locations vary
- **Alconbury Weald Walking Group** – 12.30pm on Monday at Swynford Park
- **Alconbury Weald Walking Netball** – 9.30am on Tuesday at Swynford Park MUGA
- **Alconbury Weald Football Club** – training 6pm on Monday, Wednesday and Thursday at Alconbury Sports and Social Club and matches on Saturday (times/locations vary)
- **Alconbury Weald Netball Club** – 8pm on Tuesday at Ermine Street Church Academy
- **Aura Nritya Dance Classes by Gunjan in The Pavilion**
 - **Bollywood | Hip Hop | Semi Classical** – 6:15 pm (kids) and 7pm (adults) on Friday
 - **Bollywood Fitness Workshop** – 11am on Saturday (once or twice a month)
- **Fitness Pilates** – 7.40pm on Monday in The Club
- **Mum and Tots Fitness** – 10.30am on Thursday at The Pavilion
- **Pregnancy Fitness Pilates** – 8.45am on Monday at The Pavilion
- **Right Start 3** – Strength and Balance – 9am on Friday in The Pavilion
- **Sawtry and Alconbury Weald Cricket Club** – times vary at The Pavilion and Cricket Pitch
- **Tai Chi for Health and Energy** – 12.30pm on Saturday in The Pavilion
- **Zara Fitness** – 9am on Tuesday in The Pavilion

Find out more

For the full listing, more information and booking details, visit www.alconbury-weald.co.uk/whats-on

If you have a club, group or community activity at Alconbury Weald that has not been listed, please let us know and we will add it to the What's On page and provide an update in the next edition of *Make/News*.

To book The Pavilion, email info@alconbury-weald.co.uk

Build lasting fitness

Will Moore, sports injury specialist from Moore Performance at The Pavilion, shares his insights for staying active without burning out.



Living in a growing community like Alconbury Weald, more people than ever are trying to stay active. Despite busy jobs, family commitments, and fast-paced lives, there's a clear effort to prioritise health – whether through running, the gym, sport or simply walking more.

The challenge is that it often doesn't last. Many start strong, full of motivation, pushing hard for a few weeks before something gives – time, energy, or most commonly, injury. It's a familiar cycle.

For some, the issue isn't motivation but approach. People fall into an "all or nothing" mindset, jumping from very little activity to training four or five times a week. They push through fatigue, ignore minor aches, and try to fit everything into an already packed schedule.

Long-term progress comes from consistency, not intensity. Two or three manageable sessions each week, done regularly, are far more effective than short bursts of overtraining. Recovery is just as important – sleep, rest days, and lighter sessions allow the body to adapt and improve.

Listening to early warning signs is key. Small aches often develop into bigger problems if ignored. Addressing issues early can prevent longer setbacks.

Ultimately, your routine needs to fit your life. A plan that works around your schedule is far more likely to stick – helping you stay active, healthy, and consistent long term.

www.mooreperformance.uk

Other activities

Alconbury Weald also has a range of other facilities and activities for residents and visitors to enjoy.



Roots and Wings

Alconbury Weald Church

Meeting in the main hall and grounds of Ermine Street Church Academy, Alconbury Weald Church is building a welcoming and active presence within the local community.

This local Church of England offers two styles of Sunday service:

- **InterActive services** – intergenerational gatherings with activities to explore Bible readings, opportunities for discussion, and a shared “feast” (often featuring cake), in a relaxed and engaging environment. Holy Communion is also included on occasion.
- **Outdoor Church** – hosted several times a year around a campfire. These services often include nature-based activities, Bible readings, informal discussion, cooking or baking, and the sharing of communion in a unique and reflective way.

Services take place every Sunday at 10.30am throughout June and July, followed by a four-week Summer Sabbatical break in August. Weekly services resume from Sunday 30 August.

Alconbury Weald Church also runs **Roots and Wings**, a weekly community group for children aged 0–4 and their parents or carers. Held at The Pavilion, the sessions provide a friendly and supportive environment for families from Alconbury Weald and nearby villages.

Each drop-in session includes soft play equipment, a baby sensory area, story time at 10.45am and a craft activity. For adults, there are refreshments, opportunities to connect with other parents and carers, and space to reflect on a weekly theme.

A suggested donation of £3 per family per session helps support the group, though everyone is welcome.

Whether through Sunday worship or midweek gatherings, Alconbury Weald Church is continuing to nurture a strong sense of belonging for people of all ages in the community.



The Gym

Spread across two floors in The Club building, The Gym has everything you need – from equipment to personal training options – to build strength, improve fitness and achieve real, lasting results in a friendly and welcoming space.

Members can access The Gym between 5am and 10pm every day, with secure entry using personalised key fobs. Alconbury Weald residents and Enterprise Campus staff can also get exclusive discounts (with proof of residency or employment).

For more information, email zara@theunitfit.co.uk



Alconbury Weald Community Garden

Rooted in the community, growing knowledge and flourishing together, the Community Garden supports health and wellbeing, inspires young people, brings the community together and supports ecological practices and biodiversity.

How it's getting on

The Community Garden is thriving, with lots of lovely produce grown – from herbs and garlic through to broccoli and leeks. It also has quite a few young fruit trees, which will hopefully start producing fruit this year.

Recent activities

The Community Garden hosts a range of activities throughout the year to bring together residents of all ages and interests. This includes:

- Gardening Club
- Planting days
- Making eco bird feeders and mini bug hotels
- Composting workshop

What's coming up

The Alconbury Weald gardening group meets on the first Saturday of every month and anyone that wants to get involved in planning and sharing ideas for the garden is welcome.

As well as regular Gardening Club sessions, the Community Garden will be taking part in the Hidden Gardens event on 28 June. Students from Prestley Wood Academy will also be creating a bug hotel for the Community Garden this summer.

Stay in the loop

Keep an eye on 'Alconbury Weald Community Garden' on Facebook and Instagram and Eventbrite for all the latest activities and updates.



Magpas Air Ambulance Open Days

Magpas Air Ambulance, based at Alconbury Weald Enterprise Campus, hosts open days at its headquarters throughout the year to give local people the chance to see its operational base and learn how the charity saves lives 24/7 across Cambridgeshire and beyond.

With the opportunity to learn CPR, complete themed games and activities, and explore behind-the-scenes, these open days provide a real insight into what it takes for Magpas Air Ambulance to be there for patients every day.

Ruth Beck, Magpas Air Ambulance's Corporate, Community and Events Manager explains: “Our open days are not only a brilliant way to find out more about our charity, keep the kids entertained and see our helicopter up close; they also provide us with a way to build relationships with our local community and educate the public on the advanced medical care our team provides and why our lifesaving service is so vital in the area.”

The charity's first open day of the year attracted over 200 visitors and, although tickets are free, the day raised over £500 for the service, which relies on donations to keep flying.

Find out more and sign up to their early bird mailing list to hear about future open days: www.magpas.org.uk/open-days

Stages Summer Season

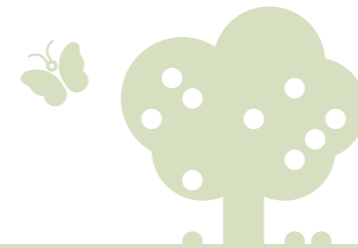
Young people (aged 6-16) can take centre stage acting, singing and dancing through some of their favourite musicals – from 6-7pm on Thursday evenings in The Pavilion:

- 18 June – KPoP
- 25 June – Charlie and the Chocolate Factory
- 1 July – Six!

Sessions are run by experienced musical theatre tutors with professional industry experience as actors, singers, dancers and presenters. You can choose the sessions that interests you – or attend all three (for a discounted rate).

One-to-one and small group sessions are also available in term time for children working towards LAMDA exams in Acting, Musical Theatre and Public Speaking. Introductory to Diploma level tuition is available.

For more information and to book please email stagescreativearts@gmail.com



Supporting a thriving community



Dedicated to supporting community life through collaboration, fundraising and shared passion, Alconbury Weald Community Association (AWCA) is a volunteer-led, not for profit group dedicated to strengthening community life.

Through monthly meetings and collaborative planning, it works to create a welcoming, active and well connected neighbourhood where everyone can get involved.

By raising and managing funds, AWCA supports local initiatives and organises a variety of community events, activities and opportunities for residents of all ages and interests.

Events to look forward to this year include Alconbury Weald Food Festival (13 June), Open Gardens (28 June), Family Fun Day (12 September) and Christmas Market (28 November). See events section (page 34) for more information.



We know life is busy, especially balancing work, family and other commitments but volunteering doesn't have to be time consuming. It's a chance to step away, meet new people, have some fun and play a part in shaping the kind of community you want to live in.

Martin, Co-Chair of AWCA

Meet the Committee

Following this year's Annual General Meeting, AWCA's Co-Chairs and Committee members for 2025/26 are:

- Martin: Co-Chair
- Dan: Co-Chair
- Gabby: Secretary
- Michael: Treasurer
- Xenia: Communications Team Lead
- Beth: Events Lead

There are still a few roles available on the Committee: Fundraising Lead, Safeguarding Lead, Volunteer Co-ordinator and Membership Officer. Details of roles and responsibilities are available in the Alconbury Weald Community Association Handbook, which can be viewed on the website.



Volunteers

Have fun while helping your community!

AWCA wouldn't be able to achieve its ambitions without its amazing volunteers. From community events to individual support, it's the time, energy and ideas of residents that help create the welcoming, community spirit we all enjoy.

Whether you can spare a couple of hours to help at an event, or you have an idea or passion project you'd like to bring to life, the Committee would love to hear from you. AWCA is looking for fresh ideas – and the people to help make them happen.

Martin, Co-Chair of AWCA, said: "Alconbury Weald is an incredible place to live with a friendly, enthusiastic and growing community. As the development expands, we want to make sure the community spirit grows with it, which can only happen when local people get involved."

Volunteering is also a great way to meet neighbours, build friendships and feel more connected to where you live; something that's often hard to find in busy everyday life.

So, if you've been thinking about getting more involved, now is a great time. Even if you don't have much time to give, it can make a real difference.

Hardship Fund

The Community Association runs a Hardship Fund that helps provide short term financial support for residents of Alconbury Weald that are suffering financial hardship.

So far, the Hardship Fund has helped with school uniforms, supermarket vouchers and payment for insurance. For long-term support, the team can signpost to relevant bodies for further support as appropriate.

For anonymity and confidentiality, referrals must come from a professional, such as the social prescribing team at the GP or the local school. If applying individuals meet the criteria, applications would only be turned down if funds were not available, which has not been the case to date.

Fundraising

The Community Association's main regular income comes from the hire of pitches for food trucks outside Co-op. It also charges a small fee to display information on the noticeboard outside Ermine Street Church Academy and plans to run a monthly community lottery, with half the money raised forming three prize funds and the other half supporting the Community Association's events and initiatives.

In future, the Committee plans to fundraise at each of its events to help generate more money to support local events and activities, as well as the Hardship Fund. To support this activity, the Community Association is looking for a Fundraising Lead to join the team.



Find out more and get involved

- Website:** www.ouralconburyweald.co.uk
- Facebook:** Alconbury Weald Community Association
- Email:** Alconburywealdca@gmail.com

Recent events

The community enjoys a variety of events each year organised by Urban&Civic and Alconbury Weald Community Association to bring people together to share food, music, entertainment and activities.



Exploring Alconbury Weald's military past

In February, residents and visitors filled The Pavilion as Airfield Research Group (ARG) Chair and USAF veteran Jeff Hawley took his audience on a virtual journey around the former RAF Alconbury, bringing to life the airfield's pivotal role during the Second World War and throughout the Cold War era.



CROAKY creativity

During the February half term, Matty Long – illustrator and author of the CROAKY series – hopped back to Alconbury Weald to show children how to draw characters and bring them to life. From sketching familiar faces from his books, to helping them create their own quirky creations ready for fantastic adventures, the session was bursting with fun and imagination.



Community Garden blooms

The Alconbury Weald Community Garden continues to flourish, with the Gardening Club bringing people together to learn new skills, exchange ideas and form new friendships.

Recent sessions have covered everything from practical composting tips to creating eco-friendly bird feeders, inspiring participants to make the most of their outdoor spaces – and there's plenty more to look forward to.



Beer Festival

Organised in partnership with The Watch Office Bar & Kitchen, Alconbury Weald's popular Beer Festival returned in the Easter holidays, providing the perfect opportunity to relax and unwind with family and friends whilst enjoying beverages from local brewers and distillers, sampling barbecue goodies and soaking up the atmosphere.



Save the date

Food Festival

Midday-6pm on Saturday, 13 June on Watch Office Green

Our popular Food Festival – in partnership with Alconbury Weald Community Association and Off The Beaten Truck – is back this summer (see back page for more information).

Hidden Gardens

10am-4pm on Sunday 28 June

This year's open garden event will showcase some of Alconbury Weald's hidden gems. From perky plants and beautiful blooms to whimsical water features and perfect patios, there's something for everyone to enjoy. All proceeds will be donated to Magpas Air Ambulance. Maps can be purchased from Swynford Coffee and The Co-op.

Summer Reading Challenge

Each year, Alconbury Weald community library takes part in the Summer Reading Challenge, which encourages children (aged 4–11 years old) to discover the joy of reading for pleasure during the Summer holidays.

This year's theme is 'Read to the Beat' with music-themed books with characters breaking down barriers through music and creative expression to follow their dream.

Every Wednesday morning during the summer holidays, community library volunteers will be available to listen to children read and hear about their latest literary adventure, awarding them with a sticker for each completed book.

Special events from 10.30am-midday include:

- 5 August: Read to the Beat Crafts*
- 12 August: Storybook Village – free drop-in book fair
- 19 August: Drawing workshop with author and illustrator Matty Long*
- 26 August: Koalas in Capes! With author Terrie Chivers*

*Booking is essential. For more information or to book events, please email Huntingdon.library@cambridgeshire.gov.uk or call 0345 045 5225.

Sign up to this year's Summer Reading Challenge at any local library from Saturday 4 July.



Heritage Open Day

Midday-5pm on Saturday, 12 September in The Club and on Watch Office Green

This year's Heritage Open Day will include a variety of artefacts, talks and tours to give residents and visitors a glimpse into Alconbury Weald's fascinating past. Tours of the Cold War Avionics Building will be available to book via the Heritage Open Day website.

Alconbury Weald Community Association's Fun Day will run alongside the heritage event with food trucks and The Watch Office Bar & Kitchen's outside bar. There will also be sports and games for youngsters and live music.

Octoberfest

Weekend of 16-17 October in The Pavilion

Following the success of April's Beer Festival, The Watch Office Bar & Kitchen is planning another opportunity to bring the community together to enjoy a range of local beers and ales.

Find out more

For more details on events, keep an eye on social media and the what's on page: www.alconbury-weald.co.uk/whats-on

The Watch Office Bar & Kitchen

The Watch Office Bar & Kitchen offers a welcoming place to relax, socialise and enjoy great food and drink in a unique setting at the heart of the community



The venue features a carefully curated menu with something for everyone – from leisurely brunches and light lunches to hearty mains and indulgent desserts. It also has an extensive drinks selection including expertly crafted cocktails, local ales and a thoughtfully chosen wine list.

During the week, you can take advantage of the 'Grab & Go' takeaway deal available from 10am to 5pm and enjoy a Bottomless Brunch from 11am-2.30pm at weekends. The team also offers an external buffet catering service for parties of four or more.

A range of regular events helps bring the community together. This includes Quiz Nights on the second Monday of the month, where teams of up to four can put their trivia knowledge to the test. On the third Monday, 'Fancy a Pint? Night offers a relaxed opportunity for men – but all are welcome – to connect, chat and unwind. Live music is also featured regularly, with the latest updates on social media.

Looking ahead, The Watch Office Bar & Kitchen is planning a Fan Zone in The Pavilion to celebrate the 2026 World Cup. They'll be showing the England group matches:

- vs Croatia on 17 June (9pm kick off)
- vs Ghana on 23 June (9pm kick off)
- vs Panama on 27 June (10pm kick off – with a free football quiz starting at 8pm)

After group stages – assuming England qualifies – they'll be showing knock out games for matches with kick off no later than 10pm.

Following the success of the Beer Festival in April, plans are also underway for OctoberFest on 16-17 October.

Opening times:

- Monday-Saturday: 10am-11pm (food served 10am-2.30pm and 5.30-8.30pm)
- Sunday: 10am-8pm (food served 10am-4pm)

www.watch-office.com

Located in the refurbished listed Nissen Hut, used for briefing aircrew before wartime missions, the décor pays tribute to its military past with a striking mural depicting British and American aircraft crew, with a Bristol Blenheim and Boeing B17 Flying Fortress soaring overhead.



Summer 2026

Alconbury
Weald

Sponsored by
 REDROW

 Alconbury Weald
Community Association

OFF THE
BEATEN
TRUCK EVENT

Food Festival

.....
Food Trucks • Food Market • Live Music
.....

Bar • Flypast • Family Activities
.....

Community Art • Desserts and more!
.....



Saturday 13 June • Midday to 6pm

Watch Office Green, Alconbury Weald, PE28 4XA

Contact

Alconbury
Weald

Master Developer

Urban&Civic

Urban&Civic
The Club, The Boulevard
Alconbury Weald, Huntingdon
Cambridgeshire PE28 4XA

E: info@alconbury-weald.co.uk
T: 01480 413141

www.alconbury-weald.co.uk
www.urbandcivic.com

Follow us on Instagram:
[alconburyweald](https://www.instagram.com/alconburyweald)

Follow us on Facebook:
www.facebook.com/alconburyweald