

**Memorial unveiled
in honour of the
95th Bomb Group**



**£1.5billion A14 road
improvements given
the green light**



**The Information
Exchange opens
in Huntingdon**



**Supporting Girls'
cricket to inspire
others to join in**



Make|News

Alconbury Weald Newsletter | Summer 2013 Issue 2

Incubator
takes
shape



Contents

News

- 04** Go-Ride on the Weald
—
Welcoming new face
- 05** LEP moves in
- 06** Road improvements
get the green light
- 07** Connecting
Cambridgeshire
—
Doing business in Turkey
- 08** Memorial dedication
- 09** Walking in Roman
footprints
- 15** Supporting Partners
- 16** Information Exchange
—
Outline Planning

Features

- 10** Incubator takes shape
- 12** Refurbishing former
entrance
- 13** Raising trees for
Alconbury Weald
- 14** Travel for Work



Hello and welcome to the second edition of our newsletter, which provides updates and information about the work of Urban&Civic and our partners as we progress the development of Alconbury Weald.

We hope you find the news and articles useful. We are keen to have your feedback on any other information you would like to see. You can also get in touch with any questions you would like answered.

There is more information about the project on our website at www.alconbury-weald.co.uk, which has a library of downloadable fact sheets. Our Information Exchange (see back cover) is open each Wednesday in Huntingdon town centre so come and see us, or get in touch with me by email or phone (below). I hope you enjoy the read!

Rebecca Britton

rbritton@urbanandcivic.com

01480 413141

Hello



Chairman's message

I have been reflecting on the way the development has progressed since our last newsletter in April. Back then, the Incubator contract had recently been signed, we had just opened the new HCV entrance and we were looking back on the visit by Communities Secretary Eric Pickles. As this newsletter goes to print we have local contractors Kier and Breheny working hard and can look forward to the Incubator building and new main entrance being completed by Christmas. Furthermore, the Government has recently nominated Alconbury Weald for additional support to accelerate the delivery of the Southern Gateway link into the site by 2015.

We are always excited when things begin happening on the ground. The investment made by everyone in discussions and consultation, in surveying and refining, is now delivering infrastructure, buildings and landscape. Most importantly, this is the point where the development starts to create real opportunities for local companies and local people. I am pleased to say we have created 173 jobs on site since the start of the development. This number will continue to grow and we are already working with the Chamber of Commerce, Jobcentre Plus, the regional colleges, Groundwork, and others to make sure we maximise opportunities locally.

You can find out more about some of these opportunities over the next few pages as well as by keeping an eye on our opportunities portal at www.alconbury-weald.co.uk. As ever, if you want to see any of the team please just get in touch or, as Rebecca suggests, drop in and see us at the new Information Exchange in Huntingdon.



Nigel Hugill
Executive Chairman
Urban&Civic

NEWS



Go-Ride on the Weald

Potential young Bradley Wiggins and Laura Trotts from St Ives and other local cycling clubs took part in Go-Ride Racing on the runway of the former airfield at Alconbury Weald back in May.

The vast expanse of the runway provides the perfect venue with plenty of open space to get up speed in a safe, traffic-free environment. The former airfield was put to good use by the young cyclists for one evening a week during April and May for coaching sessions run by St Ives Cycling Club, in conjunction with Go-Ride – British Cycling's development programme for young people.

More information on St Ives CC (including regular updates on the Go-Ride side of the club) is available on www.stivescycling.org.uk/go-ride, or call Michael Hoy on 07977 015584.



A new member of staff has joined the team at Alconbury Weald. Victoria Parchment has been employed as Office Manager of the Estate Office.

Victoria has lived in and around Huntingdon since she was a teenager. After leaving St Peter's School she attended the former Huntingdon Technical College, now Huntingdonshire Regional College. From there, she went to work at Anglian Water in Cambridge. Over the years, while raising her family, Victoria has worked for other local companies and has built up in excess of 15 years' administration and office management experience.

Having sold her car over 20 years ago to see how long she could manage without it, Victoria can be seen cycling from Huntingdon to Alconbury Weald and back daily.

Andy Brading, Site Manager of Alconbury Weald said: "Victoria has quickly become a huge asset to the team. From supporting us and co-ordinating events on-site, through to baking personalised Alconbury Weald cupcakes for The Stukeleys' Open Gardens, she has already demonstrated that she can turn her hand to anything."

New face welcoming visitors to Alconbury Weald



Local Enterprise Partnership (LEP) moves to Alconbury Weald



The Greater Cambridge Greater Peterborough Enterprise Partnership (LEP) has relocated to Alconbury Enterprise Campus. The team's office overlooks the Incubator building that is emerging and which will become their permanent base from early next year. Grahame Nix, Chair of the LEP, commented: "Alconbury Weald is the ideal place for the LEP to have its offices. Located at the heart of our area, with excellent transport links, the team can easily travel across the patch to meet with businesses and partners. It also means that we are on hand to help progress the shared work with Urban&Civic and other partners, to ensure that the Enterprise Zone is a success."

In addition to the office move, the LEP has released its five core priorities for the year ahead, which are as follows:

- **Enterprise Zone** – Enabling the development and occupation of Alconbury's Enterprise Zone
- **Infrastructure** – Advocating and influencing improvements to our area's transport infrastructure
- **Skills** – Enabling business-led skills provision
- **Enterprise** – Promoting enterprise growth and innovation
- **Profile** – Improving international promotion, increasing inward investment and exporting.

The LEP's 2013/14 Operational Plan puts in place £4.7 million of investment over the next 12 months to help address these five key priorities. Through this investment the LEP intend to deliver 1,200 new jobs and to help 100 growth businesses. They will also pilot new approaches to help businesses get the skills they need, and support disadvantaged people back into work through the VSE Prize Challenge Fund.

In addition to delivering this year's key targets, the team will be working with partners to build a new Strategic Growth Plan for the area and submit bids to the new Single Growth Pot and the combined funds under the EU Growth Programme 2014–2020. Groundwork to develop the strategies that underpin this work is already underway to ensure this area receives as much funding as possible to support economic growth.

You can find out more about the work of the LEP, share your views, and download a copy of their Operational Plan, by visiting: www.yourlocalenterprisepartnership.co.uk



Alconbury Weald is the ideal place for the LEP to have its offices. Located at the heart of our area, with excellent transport links, the team can easily travel across the patch to meet with businesses and partners.

Grahame Nix

Chair of the Greater Cambridge Greater Peterborough Enterprise Partnership



Road improvements get the green light from Government



In June, Danny Alexander – Chief Secretary to the Treasury – announced that the £1.5 billion needed to improve the A14 between Fen Ditton and Ellington would be made available. He also announced that the start of construction would be brought forward by almost two years, to 2016. He said: “This is a scheme of strategic national importance, which will unlock jobs, housing and growth in the region, as well as providing key relief for a major freight route.”

The details have yet to be finalised but it is expected that the most congested section between Cambridge and Huntingdon will become a toll road. It is also expected that the new scheme will follow much the same route as the previous plans drawn up prior to 2010.

As part of the Spending Round announcements made on 26 June, the Government announced its intention to increase its support for the growth and delivery of Enterprise Zones with an additional £50 million being made available for the Local Infrastructure Fund. Alconbury Weald is one of the beneficiaries of this additional funding, with support to bring forward the Southern Gateway access road which will form a road, bike and public transport link between the east end of the site and the north of Huntingdon.

Tim Leathes of Urban&Civic said: “This is great news and will enable us to deliver some early infrastructure investment with a direct connection from the site to Huntingdon and will help people access jobs and opportunities as the development takes shape. Crucially this connection will help us bring forward the Enterprise Zone development around the planned station area which by itself will support engineering and construction businesses and jobs in the area and in time bring new businesses to the Alconbury Enterprise Campus.”



Tim Leathes



Businesses told us that upgrading the A14 was the single most important issue to resolve – we listened and we have helped to make it happen.

Grahame Nix

Chair of the Greater Cambridge Greater Peterborough Enterprise Partnership



Grahame Nix, Chairman of the Greater Cambridge Greater Peterborough Enterprise Partnership (LEP) which has pledged £50m to the £1.5bn A14 Improvements scheme, said: “We are delighted to have landed the funding required to upgrade the A14, the most important infrastructure project in our area, and for Alconbury Enterprise Campus, one of the most significant new developments in the country. Businesses told us that upgrading the A14 was the single most important issue to resolve – we listened and we have helped to make it happen. Confirmation that the Southern Access Road has been successful in its bid for funding is also fantastic news. The road is an important part of the infrastructure required on site, and will help to open up employment land sooner than would have otherwise been possible. We look forward to seeing the work starting on site later this year.”

Connecting Cambridgeshire Broadband Champions event

Over 30 Broadband Champions came together at Alconbury Enterprise Campus in April to exchange ideas and find out more about the Connecting Cambridgeshire programme.

Connecting Cambridgeshire signed a milestone contract with BT in March for the roll-out of fibre broadband that will make Cambridgeshire and Peterborough one of the best connected areas in the country by the end of 2015. Overall 98% of homes and businesses across the county can expect to have access to fibre-based broadband by the end of the contract. The programme is led by Cambridgeshire County Council and Peterborough City Council and supported by the LEP, district councils and partners in business, health and education.

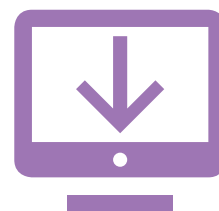
Since the agreement was signed with BT over 100 Broadband Champions have helped to encourage people to register for the countywide broadband campaign and achieved almost 25,000 registrations.



The event in April gave the 30 Champions the opportunity to meet members of the Connecting Cambridgeshire and BT teams, and get an update on the programme and the complex process of planning the roll-out of fibre broadband across the county. They also visited BT's mobile showcase vehicle to learn about the technical side of installing fibre broadband.

Noelle Godfrey, the Connecting Cambridgeshire Programme Director, outlined progress on the Connecting Cambridgeshire programme and Annette Thorpe, BT Regional Partnership Director, East of England, explained the technical and planning challenges involved in rolling out broadband across Cambridgeshire and Peterborough, with the help of Tony Smith, BT Openreach Programme Manager.

For more information, visit: www.connectingcambridgeshire.co.uk



Doing business in Turkey



Turkey is a vibrant and exciting nation offering great business opportunities for those who can see it as more than a holiday destination.

Stuart Gibbons
Chair of Huntingdonshire
Manufacturers' Association



An event designed to show local businesses how to do business effectively in Turkey was held at Alconbury Weald in May. The event was organised and run by Huntingdonshire Manufacturers' Association in partnership with UK Trade&Investment (UKTI), the Government agency which works with UK-based businesses to help them succeed in international markets.

The event marked the launch of a UKTI-supported trade mission from the East of England which will visit Turkey in 2014. A number of leading market specialists from a wide variety of backgrounds were assembled on the day to help any businesses thinking of joining the mission. There were also two experts on Turkey who were able to share their knowledge and the various techniques they used to break into the Turkish market.

Stuart Gibbons, Chairman of Huntingdonshire Manufacturers' Association said: "Turkey is a vibrant and exciting nation offering great business opportunities for those who can see it as more than a holiday destination. The average age of Turkish citizens is 29, compared with 38 for the UK; this younger generation is keen to engage with international brands and offer a workforce keen and able to develop business opportunities."

A presentation on the practical implications of Turkey's planned EU accession and its strong trade position in relation to its Near East neighbours was followed by case studies from businesses who have been successful in Turkey.

For more information about trading overseas go to www.ukti.gov.uk. To find out about the Huntingdonshire Manufacturers' Association visit www.huntingdonshiremanufacturersassociation.com



Memorial dedication to the '19 of the 95'

A memorial plaque in honour of 19 United States Army Air Force air and ground crew of the 95th Bomb Group who lost their lives 70 years ago at Alconbury Airfield was dedicated on 27 May.

The event commemorated the day when, 70 years before, at around 8.30pm, USAAF ground personnel were arming B-17 Flying Fortress bombers and, inexplicably, a 500 pound bomb detonated. The explosion set off several other bombs and, in an instant, 19 men were killed and 21 injured. Four B-17 bombers on the ground were completely destroyed and eleven others damaged.

The memorial was brought about through a collaboration between Urban&Civic and the Airfield Research Group, who are working with them to capture the historic use of the former airfield during the Second World War and Cold War.

Rebecca Britton, from Urban&Civic said: "When we were working through the history of the airfield, we came across a small reference to this incident, which we think is the biggest single loss of life on the airfield throughout its history. We discussed it with the Airfield Research Group who have done an amazing job in carrying out additional research which enabled us to pull together pictures, eyewitness accounts, and crucially the names of the men killed. From there, it just felt the right thing to have a memorial to mark the incident."

Paul Francis of the Airfield Research Group said: "It is not always easy to find out more information about events that happened 70 years ago, but through perseverance, the team were able to account for all the 19 crew killed in the incident, and this is really the only place where their sacrifice is marked. It is particularly poignant in that the role and sacrifice of ground crew is often overlooked, yet many were away from home for longer than pilots and aircrew and faced dangers from the explosives they worked with as well as from direct bombing raids."



...the team were able to account for all of the 19 crew killed in the incident, and this is really the only place where their sacrifice is marked.

Paul Francis
Airfield Research Group



Colonel Brian Kelly, Commander 501st Combat Support Wing of the US Air Force attended the event, along with an American Guard of Honor. He added: "What struck me most about this incident was that the 95th Bomb Group had only been on base for just a few days. It must have been devastating for all of those involved, and for families back in the States. As we also mark 70 years of the USAF coming to Europe to join the war, it was very moving to be a part of acknowledging this loss, and knowing that our British allies will carry on remembering the sacrifices both countries made in the name of freedom."

Eyewitnesses from the time reported seeing an engine from the exploding bomber fly through the air, punch through another B-17 and finally come to rest wedged beneath a third, parked over 600 feet away. Off-duty airmen from the unit enjoying an outing to the cinema in Huntingdon heard and felt the explosion, rushed out of the cinema to find a truck and drove at speed back to the base to help their comrades.

RAF Alconbury played a central part in military operations across Europe in the Second World War and for many years after during the period of the Cold War. It was an operational airbase from 1938 through to the mid 1990s, with the last flight taking off in February 1995. The owners of the site, Urban&Civic, are now using the collective expertise of the Airfield Research Group to develop a full archive of the airfield which will ensure that this history is both recorded and promoted. Whilst the former airfield will be transformed into the Alconbury Enterprise Campus and the new communities of Alconbury Weald, its heritage will be woven into the fabric of the place for future generations via a dedicated heritage area around the listed buildings, public archive and integration of historic features.

Walking in Roman footprints

A field walk has helped to provide further evidence of Alconbury Weald's past history when an enthusiastic group of 25 amateur archaeologists were guided on a field walking exercise at Owl End in Great Stukeley. Organised by The Stukeleys' Heritage Group and funded by Urban&Civic, the aim of the walk was to find and identify pottery and other artefacts located on a small field close to Ermine Street, the Roman road which was a major supply route between London (Londinium) and Lincoln (Lindum Colonia).

Following instruction from professional archaeologists James Fairbairn and Rob Atkins from Oxford Archaeology East, the group walked in pre-set straight lines across the field scanning the ground for anything unusual. In total, 25kg of pottery and metalwork was collected.

The most significant find of the day was a small Romano-British brooch dating from between AD43 and AD75. The remainder of the finds are currently being cleaned and identified by Oxford Archaeology who will produce a report which will be made available to the public.

The field walk came about after members of The Stukeleys' Heritage Group approached Urban&Civic about the field which have recently been turned into a community allotment and woodland for local residents. Michael Monk, convenor of the Group, said: "There have been a number of studies done about the older history of this area, and several of our members were interested to get out there and have a look. We wanted to make use of that opportunity. Our members will continue to study the finds, and we hope to work with Urban&Civic to create a display."

Rebecca Britton from Urban&Civic said: "The history of Alconbury Weald is not all about the Cold War and as we start to capture the history of the site we will also capture its role during the Roman occupation and into the Middle Ages. It goes to show that its location on the cross-roads of the country made it a good place to live and do business throughout history: which is very exciting as we now look to the next stage of its development as Alconbury Enterprise Campus and Weald."

The field walkers were made up from members of The Stukeleys' Heritage Group, the Huntingdon U3A Archaeology Group and Ramsey Archaeology Group.



Features

The Incubator – the flagship building of Alconbury Enterprise Campus – is starting to excite the interest of small and start-up businesses as it rises from the former airfield which is being transformed into Alconbury Weald.

Construction is progressing well with the second floor in, and the building due to be topped out and made water tight over the summer.

Designed by internationally renowned architects Allford Hall Monaghan Morris, the building will provide flexible inspiring space at the heart of the Alconbury Weald development. As part of the Enterprise Zone, businesses moving in will also enjoy a range of business benefits including business rates relief and superfast broadband. The £2.3 million contract for construction is being undertaken by Wisbech-based Kier and will be completed by the end of the year.

With units ranging from 250–2,500 sq ft (23–232 sq m) available for offices, research and development and production, the building has been designed to provide supported and

flexible space for start-up and small businesses. The Incubator also offers networking space including a café and roof terrace which will ensure the building becomes a hub for sharing and developing ideas. It boasts a range of sustainable features to reflect the low carbon aspirations for the whole development.

Materials used to date:

- 60 tonnes of steel fixed
- 400 cubic metres of concrete poured and laid
- 5,686 labour hours spent on site.



If you want to follow the construction of The Incubator there is a time-lapse camera taking regular updates which you can access from our website: www.alconbury-weald.co.uk



Sustainability is at the heart of the new building

A Rain Water Harvesting Tank will be installed over the summer which:

- provides financial benefits
- reduces running cost to tenants
- supports BREEAM Very Good rating
- reduces impact on the environment
- reduces demand on mains water consumption.

Glulam – or Glued Laminated Timber – is a type of manufactured timber with many advantages over more traditional construction products. It is being used to create an impressive finish to the interior of the building. It is:

- **versatile and lightweight** – $\frac{1}{3}$ the weight of a reinforced concrete beam ($\frac{2}{3}$ the weight of steel)
- **economical** – glulam's lower weight has led to savings in transport, foundations load requirements
- **easy fixing** – material that's easy to handle, work with and erect
- **fire resistant** – an important safety factor
- **durable**
- **architecturally attractive** – a natural and attractive appearance blends into the Alconbury Weald surroundings
- **energy conserving** – a renewable resource that's ecologically attractive and that uses only a tenth of the energy it would take to produce an equivalent steel beam.

Flagship building takes shape



If you are interested in taking business space in The Incubator please contact Andrew Brading, Site Manager, on 01480 413141 or email abrading@savills.com

The transformation of North Gate into a stylish entrance to the Enterprise Campus at Alconbury Weald is now underway. The former access will be refurbished into a richly landscaped gateway directing cars, bikes and pedestrians along a newly-constructed boulevard lined with mature lime trees towards The Incubator, the first new building of the Campus.

The new boulevard references the alignment of the historic runways setting a distinctive design approach for the development. Later phases of the boulevard will see its extension further into the site towards the hub of Alconbury Weald, where it will pass by the listed and retained former Second World War Watchtower in an area of green space.

Currently all traffic, including Heavy Commercial Vehicles (HCVs), is using the Gatehouse entrance further north along Ermine Street which was opened in February. On completion of the refurbished North Gate in December, the entrances will be split so that cars, bikes and pedestrians accessing The Incubator will use the North Gate, while all other traffic, including HCVs and construction traffic, will continue to use the Gatehouse entrance.



Delivery of the work is being carried out by Huntingdon-based civil engineering company Breheny. A sustainable strategy has been applied to the boulevard's construction including the re-use of crushed material in its sub base from the former airfield, an innovative approach to recycling materials on site and minimising the need for construction traffic on the local roads.

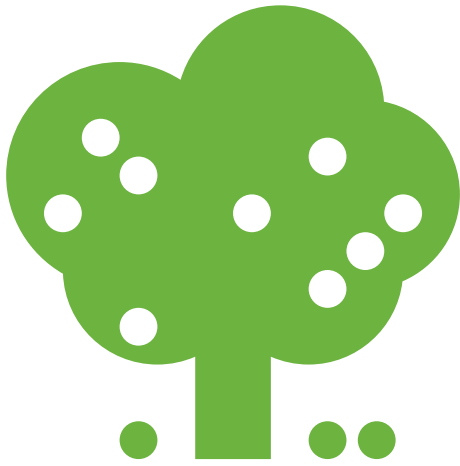
Approximately 2,000 trees and shrubs will be planted around the new entrance, creating the leafy and natural look which will set the tone for much of the future 700 acres of green space included in the development. The planting will consist of semi-mature trees including Field Maple, Wild Cherry, English Oak and Crab Apple, interspersed with native woodland shrubs such as Common Hazel, Hawthorn, Privet, Blackthorn, Dog Rose and Guelder Rose. Later in the year an avenue of fully mature lime trees up to nine metres tall will be planted along the boulevard as far as The Incubator building.

Tim Leathes, Project Director for Urban&Civic said: "From the outset one of our guiding principles has been to craft a place where the natural environment has a strong presence; the refurbished North Gate will show that we are starting as we mean to go on. Some of the shrubs will come from our new on-site tree nursery where Alconbury Weald's Tree Ranger Amrita Huggins is raising plants from seeds collected locally. Others will be bought in to show instant impact and create a more natural scene with trees of different sizes, ages and species.

"This first phase of the boulevard will demonstrate the high quality of infrastructure intended for Alconbury Weald. Progress on both this and The Incubator is all going well, and we can't wait to open up the original entrance again towards the end of this year."



Refurbishing the former entrance



Raising trees for Alconbury Weald

GET INVOLVED
SEE OVER →



The new tree nursery at Alconbury Weald is taking shape. The first 10 raised beds have been erected which will be used to nurture tree saplings into semi-mature trees ready to be transplanted around the development. The irrigation systems are complete, the rabbit fencing secure and the tool store kitted out and freshly decorated. The cold spring allowed extra time to plant trees and hedging around the perimeter of the nursery which, once matured, will help to shelter the seedlings.



Establishing a tree nursery in the first stages of the development will ensure that saplings are ready to plant as Alconbury Weald starts to form and means the trees will be grown from local provenance – including the neighbouring ancient woodland in Monks Wood and on the Lord de Ramsey estate. The trees will be planted across Alconbury Weald as hedgerows, woodland and individual trees in open space. Sourcing trees as locally as possible means that the trees are adapted to the local conditions, less energy is wasted in transport, and there is less chance of transmitting plant diseases and pests. Oak, Hazel, Dogwood and Blackthorn are just some of the local native species which have been planted.

The hard work required to put the tree nursery in place was carried out by local community charity, Groundwork. Groundwork, which describes itself as the charity 'with a green heart', aims to bring benefits both to people and the environment through projects which help people to gain confidence and skills at the same time as using the environment as a catalyst for building a more sustainable future.

Tim Leathes of Urban&Civic, said: "We hope this pilot scheme, delivered by Groundwork, will be just the start of opening up opportunities within the development of Alconbury Weald and the Enterprise Campus."

The 11 young adults who helped to establish the tree nursery in the spring were unemployed at the time but, through a six-week programme with Groundwork, had the opportunity to partake in a City & Guilds qualification in Employability as well as the CSCS (Construction Skills Certification Scheme), by carrying out practical projects on the land including building the raised tree nursery beds, building steps and constructing tool storage units. Gaining the CSCS Certificate means that the young adults are now qualified to work on building sites.

Ryan Halliday, aged 20, from Huntingdon said of his work at Alconbury: "Being able to get out here on site is so much better than sitting at home doing nothing. We had to go through a group interview process to get this opportunity but it has been worth it – we will end up with qualifications to add to our CVs and the guys from Groundwork looked after us well."

A follow-up project on the tree nursery site in the early summer gave a further nine young people the opportunity to

learn new skills including painting and decorating, building a picnic table, as well as putting in more raised beds for the tree saplings.

Chris Dungate, from Groundwork Hertfordshire, said: "These projects give the volunteers an opportunity to improve their practical landscaping and construction skills as well as helping them to gain confidence in securing employment. This has been a successful partnership project between Groundwork, Urban&Civic, Huntingdon Regional College and Jobcentre Plus and we hope to deliver more Green Skills projects for 16–24 year olds in the future."

Alconbury Weald's Ranger, Amrita Huggins, said: "It's been a busy few months for the tree nursery team, transplanting tree seedlings into the beds and keeping on top of the weeds. It's great to have the nursery in operation now and to see the saplings in full growth. The next few years will be an exciting time for us as we develop the nursery, not just to grow more trees, but also to develop learning opportunities and features such as ponds and wildflower meadows."





GET INVOLVED

Learn new skills in horticulture and habitat creation



Groups and individuals have the opportunity to learn new skills in horticulture and habitat creation, via volunteering at Alconbury Tree Nursery. A volunteer session currently runs on Tuesday and Thursday mornings, 9.30–12.30, and is open to anyone who would like to gain work experience, or contribute their time and skills towards enhancing the natural environment.

Alconbury Weald also supports Huntingdonshire Community Nursery in Godmanchester, which is run by Huntingdonshire District Council's Countryside Services and supplies trees for the council's parish planting scheme. Volunteer opportunities are also available there. If you are interested in joining our volunteer team, or if you have skills or knowledge you would like to share, or if you would simply like more information, please contact:

Amrita Huggins

Amrita.huggins@huntingdonshire.gov.uk
07748 623073



Travel for Work Partnership



The Travel for Work Partnership (TfW) works with employers across Cambridgeshire to promote sustainable commuting and business travel. One of the many ways in which TfW can help employers includes grants of up to £6,000 for its members to improve infrastructure at their workplace that encourages sustainable travel.

TfW is a not-for-profit partnership hosted by Cambridgeshire County Council, one of its ten partners. Other partners include the University of Cambridge, the Cambridgeshire Chambers of Commerce, Addenbrooke's Hospital and Huntingdonshire District Council. TfW has an expanding network of over 100 members, including Urban&Civic at Alconbury Weald, and who employ more than 68,000 staff.

Now is a great time to get involved with TfW too. Due to Government funding, employers based in Cambridge and up the A14 corridor to Alconbury Weald, Huntingdon and St Ives, as well as up the A10 corridor to Ely are able to benefit from a range of services, tools, discounts and grants.

By providing travel solutions to employers within Cambridgeshire via the promotion of car sharing, cycling, walking, bus use and rail travel, TfW helps both businesses and employees save money whilst reducing congestion, easing car parking pressure, and keeping fit.

Up to £6,000 of match funding is available from TfW for member

The opening of Hinchingsbrooke Hospital's new cycle stands, funded by TfW's Workplace Sustainable Travel Grant



employers to make improvements such as car share bays, cycle stands, locker/shower facilities and other initiatives such as the purchase of pool bikes, which will encourage the use of more sustainable transport to and from work. TfW is also able to offer up to £500 per member employer for the promotion and running of a sustainable travel event. You can find out more online by going to the www.tfw.org.uk

Some of the other free services offered by TfW include:

- Bespoke and annual travel surveys
- Train and Cycle shop discounts
- Postcode mapping of employees to identify potential car sharing matches and proximity to transport routes
- Help with developing travel plans
- Cycle training
- Loan of electric pool bikes
- Events at your workplace to promote sustainable transport
- Newsletter – provides information about initiatives, events and grants.

TfW also provides the online car sharing database: www.camshare.co.uk. CamShare is free for employees to sign up to, and allows them to find a car sharing match for their journey to and from work. Travel Plan Plus (www.travelplanplus.org.uk), a successful project in the Cambridge Science Park area, is also operated by TfW.

Membership of TfW is free of charge. Please get in touch to discuss on 01223 715550 or email info@tfw.org.uk. For more information visit: www.tfw.org.uk



Having lessons outside at **Alconbury Primary School** is no longer dependent on good weather thanks to successful fundraising by parents and a donation from Urban&Civic towards the construction of a wooden shelter. In April Rebecca Britton carried out the official opening of the new outdoor classroom which will be used to enrich the curriculum by taking learning outside as much as possible.

A chance to enjoy a performance of *Macbeth* in a setting much like one that would have been used in Shakespeare's own time took place throughout two weeks from the end of June at The George Hotel in Huntingdon. Every year **Shakespeare at The George** perform one of the Bard's plays in the Jacobean courtyard of the hotel. Urban&Civic are proud to sponsor the performances.

Urban&Civic continues to support and encourage young people's involvement in sports through their sponsorship of the annual **Alconbury Football Tournament**. The eighth annual tournament took place in mid-June when over 100 boys' and girls' football teams ranging from the under-7s through to under-14s came together in Alconbury to play six-a-side games throughout the weekend. The teams consisted of players from across the Eastern region including Bedfordshire, Cambridgeshire, Hertfordshire, Northants, Lincolnshire, Essex and Norfolk and the tournament continues to expand each year.



Supporting Partners

Alconbury Weald was once again the venue for the annual **Huntingdon 10k Charity Run** on Fathers' Day in June. This was the second time the airfield was used for the event with over 670 runners taking part in the 10k Run and a further 206 in the 3K Fun Run. The former airfield, with its long straight runway and plenty of space for supporters as well as a Community Fair, provides the perfect venue for the charity run which looks set to become an annual Alconbury Weald event. Organised by local Huntingdon group Hullabaloo, the event saw the fastest finishing times for 2012 smashed in both races on a day of record entries, big crowds and fine weather.



Two local dads, Martin Brett and Neil Galloway, were successfully chosen as one of only 45 teams to take part in the **Help for Heroes 4x4 European Rally** in June. The team, known as The Stukeley Defenders, also included their 10 year-old sons Matthew and Jake, and set a target of raising £3,000. So far they have raised nearly £8,000. Neil said: "The rally was a fantastic experience for us all. Thanks to the generosity of all those who have donated, including Urban&Civic, we are proud to have completed the journey. It was awesome." The Land Rover Defender followed the route of the 1944 Allied invasion through Europe. Since its launch three years ago, the Rally has raised over £600,000 for Help for Heroes, the charity which provides practical support to wounded, injured and sick Service personnel, veterans and their families. Donations can still be made at www.bmycharity.com/stukeleydefenders



Urban&Civic are also investing in **Huntingdonshire Girls' Representative Cricket** over the next three years to help develop the sport here in the region. To celebrate the arrival of their new kit, sponsored by Urban&Civic, the England Women's Captain, Charlotte Edwards, above right, attended a County under-13 20/20 match with Cambridgeshire in June at Godmanchester Cricket Club. Rebecca Britton of U&C said: "Hunts Cricket Board is a great example of how people with passion and commitment can create a lasting legacy and provide opportunities to play a sport which not only has great health benefits, but also builds a real sense of teamwork and confidence among young people. Their championing of the girls' game – with the fantastic role model of Charlotte Edwards – has clearly paid off. We're proud to be supporting the Girls' teams over the next three years as they inspire others to join this great game."

The **Huntingdon Association for Community Transport (HACT)** was set up in 2012 as a not-for-profit organisation serving the people of Huntingdonshire who have difficulties using conventional modes of transport. The service aims to provide an accessible, affordable and safe transport service ranging from Ring and Ride through vehicles for Group Hire and a Youth transport service, as well as Special Outings and Pub Lunches. The scheme is funded by Cambridgeshire County Council and Huntingdon District Council with sponsorship from Urban&Civic. More information can be found at www.hact-cambs.co.uk

Information Exchange

Alconbury Weald Information Exchange in Huntingdon town centre is now open. The shop in St Benedict's Court – close to the Library – will be a one-stop-shop for people to find out the latest about the 20-year development. It is currently open every Wednesday between 10am and 4pm with plans to open for specific events in the future.



The shop will also be used to promote contract opportunities to local businesses. In time it will become the jobs hub as the development takes forward major construction and landscaping work on-site and attracts new businesses who want to recruit people from the local area.

The shop will also be used as a centre for events and courses linked to the development through partnerships with Jobcentre Plus, the Regional College, the Local Enterprise Partnership and local authorities.

Further information call 01480 413141 or email rbritton@urbanandcivic.com



Don't forget you can register for an alert on jobs coming up at Alconbury Weald through our online portal. Companies can also register to find out about contracts on site. Find out more at www.alconbury-weald.co.uk.

Outline Planning Application

Urban&Civic have submitted Additional Information and Briefing Notes in support of the Outline Planning Application for Alconbury Weald.

The provision of this information follows on from a review of the feedback Huntingdonshire District Council received from the public consultation on the Outline Application after its submission in August 2012. The Council then set out areas for further discussion and clarification. One of the key elements of this feedback was the recommendation that the location of the secondary school be moved to a position more central within the site.

The Additional Information which Urban&Civic submitted is set out in two ways: one section features formal revisions to the original documents, which reflect the recommended changes. The Council also asked for clarifications on key topics which have been provided as Briefing Notes and cover landscape and visual impact, ecology, waste, energy and transport.

Tim Leathes, Project Director for Urban&Civic said: "The consultation and feedback process has been constructive and helpful, and we are grateful for the support people have shown throughout to ensure we get the plans and implementation of this major strategic development right – both for the area's economic growth, but also to ensure a good and enduring quality of life for new and existing residents."

Following consultation on the additional information the Council's Planning team will draw together the Officer's report which will be considered at the Development Management Panel's meeting in October. That meeting will make the formal decision on whether the outline planning permission should be granted. If they do give consent then a Development Framework will be agreed which incorporates conditions and legal agreements – including developer contributions to infrastructure, facilities on-site and within the wider area.

Urban&Civic have produced a further guide to help people navigate the additional information and the next stages of the planning process. This is available in the Alconbury Weald online library at www.alconbury-weald.co.uk/library. The additional information is available on the Huntingdonshire District Council's Alconbury Weald portal.

Feedback



Ask us a question:

If you have any questions you want us to answer, please drop us a line.

Get in touch:

Rebecca Britton

T: 01480 413141

E: rbritton@urbanandcivic.com

Rebecca Britton

Urban&Civic Ltd, 137 North Gate

Alconbury Enterprise Campus

Alconbury Weald, Huntingdon

Cambridgeshire PE28 4WX

Contact



For more information about business space on Alconbury Enterprise Campus please contact:

Andrew Brading, Site Manager

T 01480 413141

E: abrading@savills.com

For more information about the planned development, Urban&Civic or the local projects we are involved in please contact:

Rebecca Britton,

Community Liaison Officer

T 01480 413141

M 07739 339 889

E: rbritton@urbanandcivic.com

Follow us on Twitter  @beccaUandC

Contribute



If you have a news story or event you want to publicise through the pages of this newsletter or our website, please send details to Rebecca Britton at:

rbritton@urbanandcivic.com

Next issue



● **Focus on employment and training opportunities**

● **Update on The Stukeleys' Community allotments**

● **Being part of Huntingdonshire's Chamber of Commerce**